



## Apartment Three-bedroom (4+kk)

Rented

135 m<sup>2</sup>, Prague 3, Vinohrady, Laubova





## Apartment Three-bedroom (4+kk)

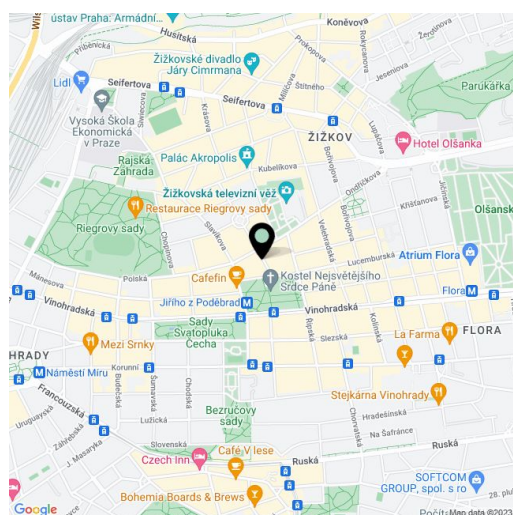
**Rented**135 m<sup>2</sup>, Prague 3, Vinohrady, Laubova

Total area	137 m <sup>2</sup>
Floor area*	135 m <sup>2</sup>
Balcony	2 m <sup>2</sup>
Parking	One parking space located 350m from the building is included in the rent.
Garage	Yes
Cellar	Yes
PENB	G
Reference number	28836
Available from	Immediately

**Brand new attractive unfurnished 3-bedroom 2-bathroom flat situated on the first floor of a completely refurbished Art-Nouveau building with a lift and preserved original features. Conveniently located in the popular Vinohrady residential area at Jiřího z Poděbrad Square with metro station and tram links, with full amenities within easy reach**

The interior includes a living room with a fully fitted open kitchen and dining area, master bedroom with a walk-in closet and en-suite bathroom with tub, second bedroom with walk-in closet, bedroom facing courtyard, bathroom with shower, technical room and entry hall.

High standard materials and finishes, large windows, solid wood parquet floors, tiles, security entry door, built-in wardrobes, gas boiler, high quality appliances incl. a washer / dryer, plenty of storage space, cellar. Common building charges CZK 3,000/person/month. Monthly deposit for water and heating CZK 4,000. Electricity will be transferred to the tenant's name. Unfurnished, possible to furnish at a higher rent.



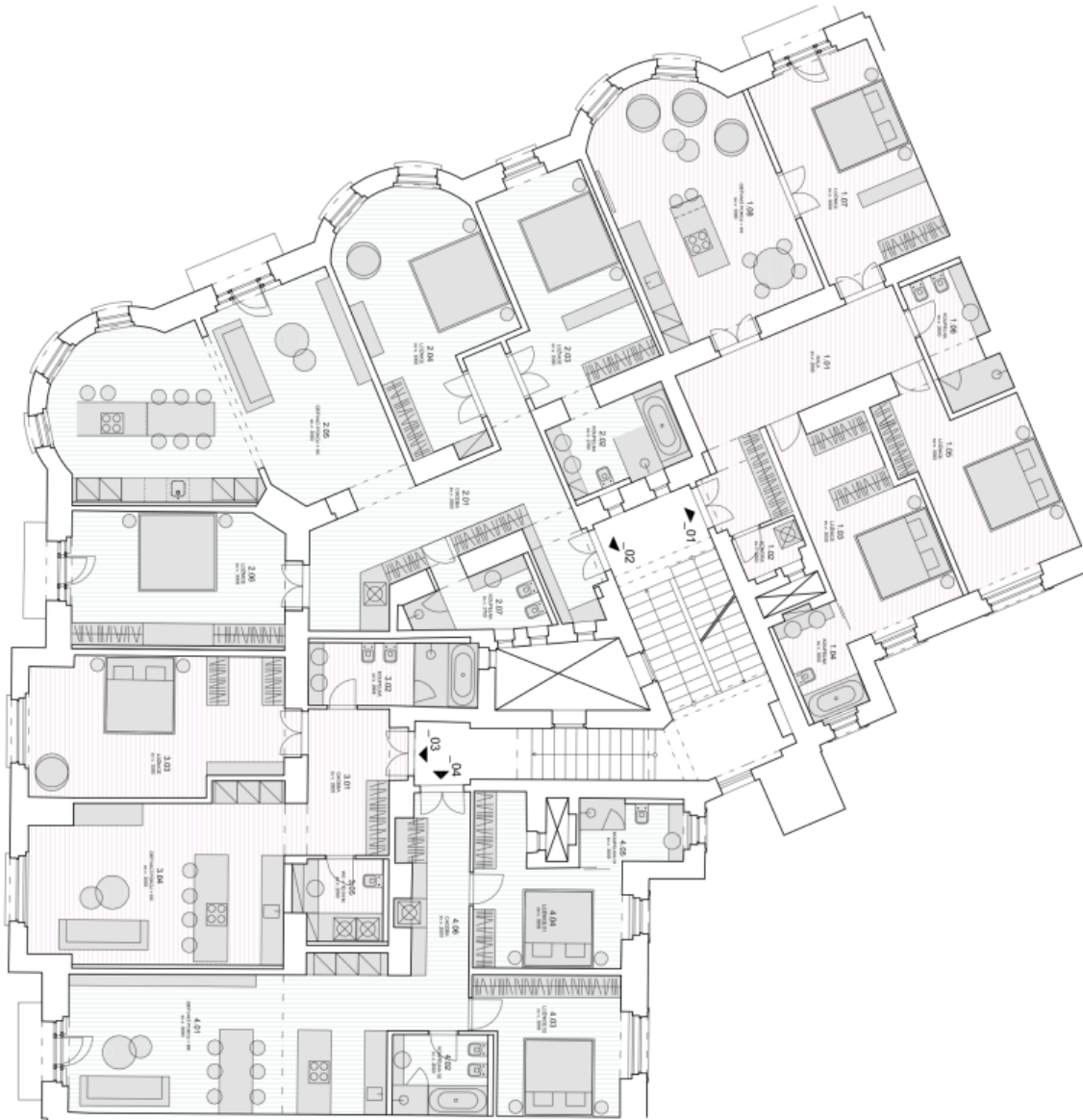
\* Area of the unit according to the Civil Code. The area consists of the sum total area of the entire unit bounded by perimeter walls.



# Apartment Three-bedroom (4+kk)

135 m<sup>2</sup>, Prague 3, Vinohrady, Laubova

Rented



Byl 01\_4+kk

TABULKA MĚSTNOSTI		
ČM	MĚSTNOST	PLOCHA m <sup>2</sup>
130	HAJA	21,0
132	KOHAŇKA	2,4
133	LOHENSE	10,9
134	KOPELKA	5,5
135	LOHENSE	20,7
136	KOPELKA	7,2
137	LOHENSE	32,7
138	OSVĚŽENÍ PANE	24,3
CELKEM		134,9

Byl 02\_4+kk

TABULKA MĚSTNOSTI		
ČM	MĚSTNOST	PLOCHA m <sup>2</sup>
131	OSVĚŽENÍ	27,7
132	KOPELKA	6,9
133	LOHENSE	27,0
134	LOHENSE	26,8
135	OSVĚŽENÍ PANE	26,4
136	LOHENSE	24,3
137	KOPELKA	7,0
CELKEM		166,8

Byl 03\_2+kk

TABULKA MĚSTNOSTI		
ČM	MĚSTNOST	PLOCHA m <sup>2</sup>
130	CHODKA	10,7
131	KOPELKA	9,0
132	LOHENSE	20,9
134	OSVĚŽENÍ PANE	30,4
135	HC - TĚŽKA	5,9
CELKEM		86,9

Byl 04\_3+kk

TABULKA MĚSTNOSTI		
ČM	MĚSTNOST	PLOCHA m <sup>2</sup>
431	OSVĚŽENÍ PANE	20,3
432	KOPELKA	6,4
433	LOHENSE	15,9
434	LOHENSE	16,9
435	KOPELKA	5,4
436	CHODKA	12,3
CELKEM		86,9