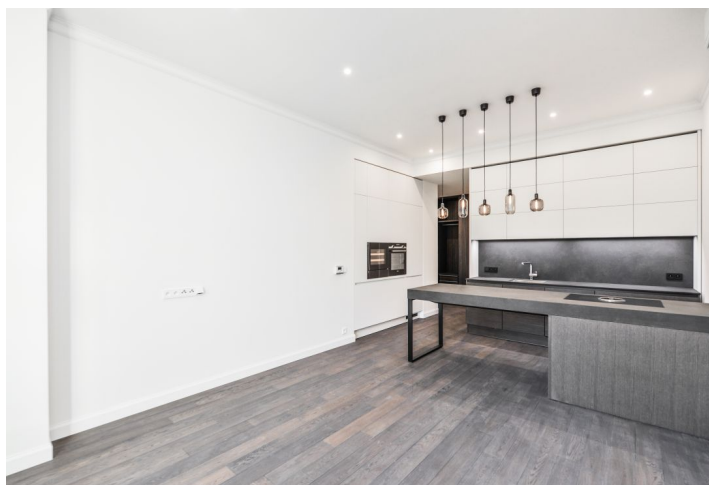




Apartment One-bedroom (2+kk)

Rented

89.9 m², Prague 3, Vinohrady, Laubova





Apartment One-bedroom (2+kk)

Rented

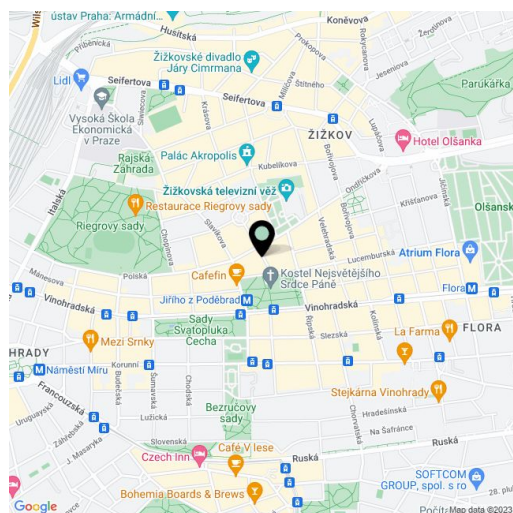
89.9 m², Prague 3, Vinohrady, Laubova

Total area	90 m ²
Parking	One parking space located 350m from the building is included in the rent.
Garage	Yes
Cellar	Yes
Service price	Common building charges EUR 125/person/month. Monthly deposit for water and heating CZK 5,000. Electricity will be transferred.
PENB	Not required
Reference number	28839
Available from	01.09.2026

Boasting views of the Jiřího z Poděbrad Square and the unique modern Church Of The Most Sacred Heart Of Our Lord, this is an attractive air-conditioned unfurnished flat. Situated on the first floor of a completely refurbished Art-Nouveau building with a lift and preserved original features. Conveniently located in the popular Vinohrady residential area at Jiřího z Poděbrad Square with metro station and tram links, with full amenities within easy reach.

The interior includes a spacious living room with a fully fitted open kitchen and dining area, bedroom with walk-in closet, fully equipped bathroom with shower, tub, toilet and bidet, guest toilet and entry hall.

High standard materials and finishes, large windows, solid wood parquet floors, tiles, security entry door, built-in wardrobes, gas boiler, high quality appliances incl. a washer / dryer, plenty of storage space, cellar. Unfurnished, possible to furnish at a higher rent. One parking space located 350m from the building is included in the rent.



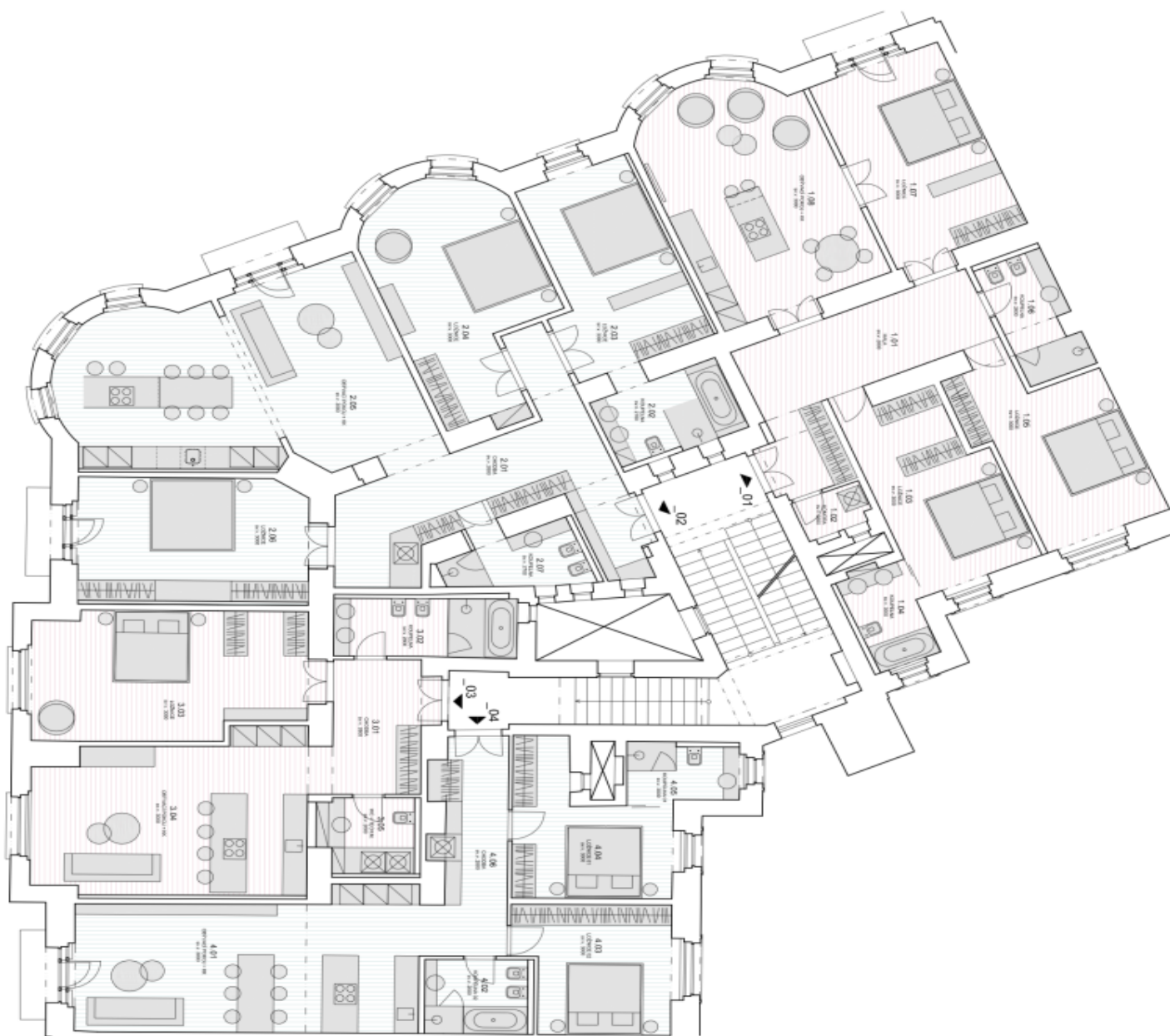
* Area of the unit according to the Civil Code. The area consists of the sum total area of the entire unit bounded by perimeter walls.



Apartment One-bedroom (2+kk)

Rented

89.9 m², Prague 3, Vinohrady, Laubova



byl 01_4+kk

ČM	WEŠTVOŮT	PLOCHA m ²
1.01	KLÁDA	21.9
1.02	KOKOSKA	2.4
1.03	LOŽNICE	10.8
1.04	KOUPELNA	5.5
1.05	LOŽNICE	20.7
1.06	KOUPELNA	7.2
1.07	LOŽNICE	23.7
1.08	ODYVAČI PRŮKLA + HK	24.5
CELKEM		
		134.3

byl 02_4+kk

ČM	WEŠTVOŮT	PLOCHA m ²
2.01	CHODBA	27.7
2.02	KOUPELNA	8.9
2.03	LOŽNICE	21.9
2.04	LOŽNICE	24.8
2.05	ODYVAČI PRŮKLA + HK	24.4
2.06	LOŽNICE	24.9
2.07	KOUPELNA	7.0
CELKEM		
		139.3

byl 03_2+kk

ČM	WEŠTVOŮT	PLOCHA m ²
3.01	CHODBA	10.7
3.02	KOUPELNA	9.0
3.03	LOŽNICE	28.9
3.04	ODYVAČI PRŮKLA + HK	34.4
3.05	WC + TECH. M.	6.9
CELKEM		
		89.9

byl 04_3+kk

ČM	WEŠTVOŮT	PLOCHA m ²
4.01	ODYVAČI PRŮKLA + HK	29.3
4.02	KOUPELNA	6.4
4.03	LOŽNICE	15.6
4.04	LOŽNICE	14.9
4.05	KOUPELNA	5.4
4.06	CHODBA	12.3
CELKEM		
		94.9