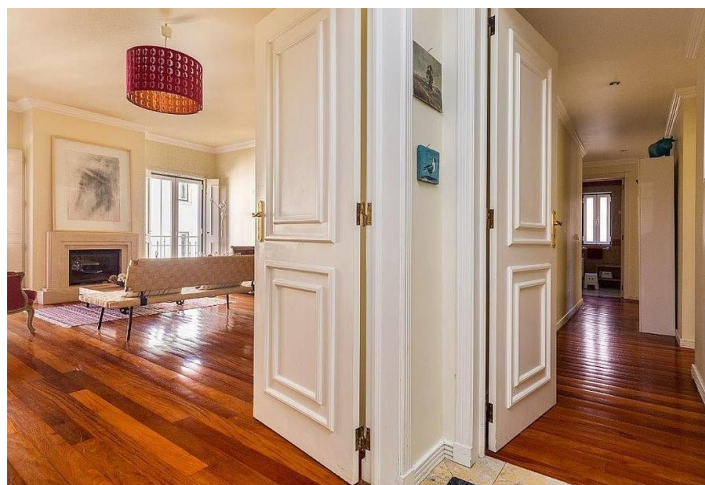
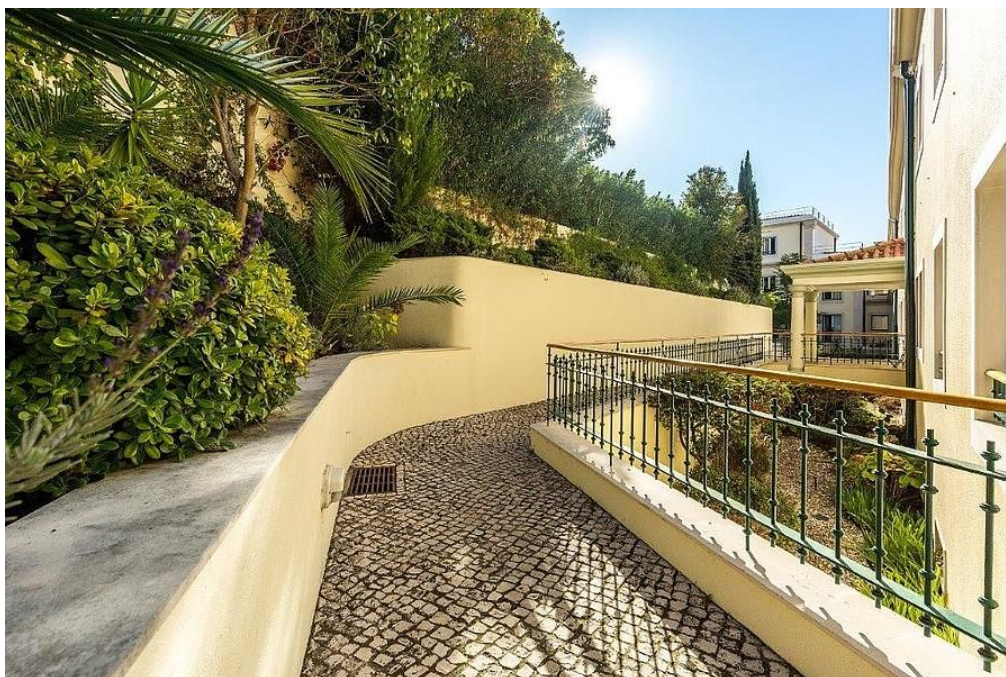




Apartment Three-bedroom (4+1)

€ 865 000 | CZK 21 932 075

165 m², Lisboa, Área Metropolitana de Lisboa, Estrela, Lapa





Apartment Three-bedroom (4+1)

€ 865 000 | CZK 21 932 075

165 m², Lisboa, Área Metropolitana de Lisboa, Estrela, Lapa

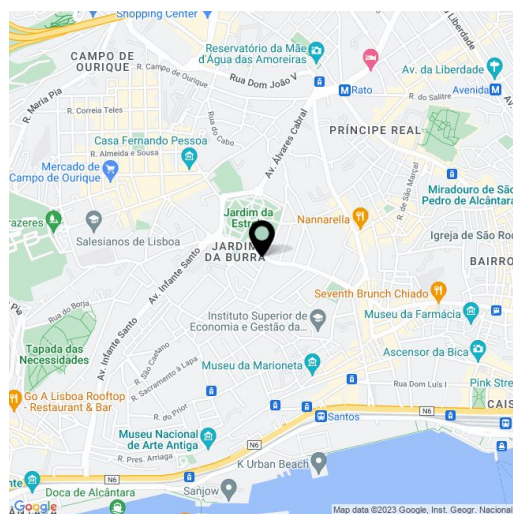
Total area	165 m ²
Parking	Yes
Cellar	-
PENB	G
Reference number	28869

This handsome, three-bedroom apartment is situated in an intimate residential complex with a lift, communal pool and garden.

The apartment boasts an **abundance of natural light**, making for bright and sunny living conditions. The layout consists of a living room with a **fireplace** and **office area**, a separate kitchen, **three bedrooms**, **two bathrooms**, and an entrance hall with a storage room. The rooms are spacious and flaunt **built-in cabinets**.

The private residential complex is located in the **Lapa quarter** in a noble neighborhood close to various embassies. Lapa is known for its mansions, quiet atmosphere and **sought-after reputation**. The building itself is in **excellent condition** and the communal garden and swimming pool are very well-maintained by the complex. The apartment comes with **two parking spaces**.

Gross area: 165 sq. m.



* Area of the unit according to the Civil Code. The area consists of the sum total area of the entire unit bounded by perimeter walls.