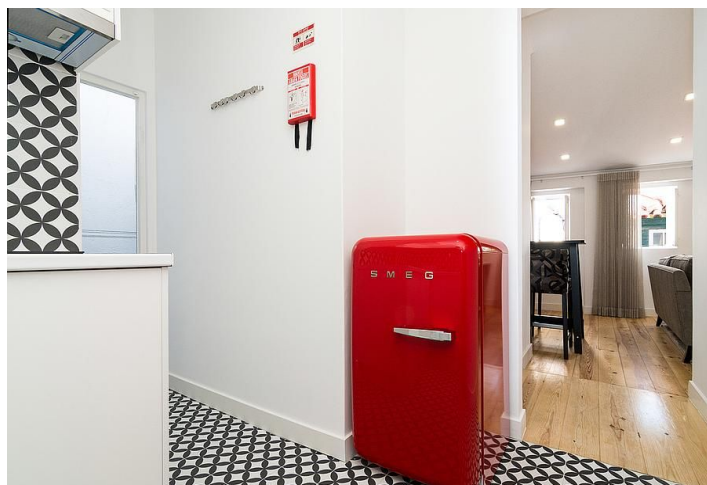
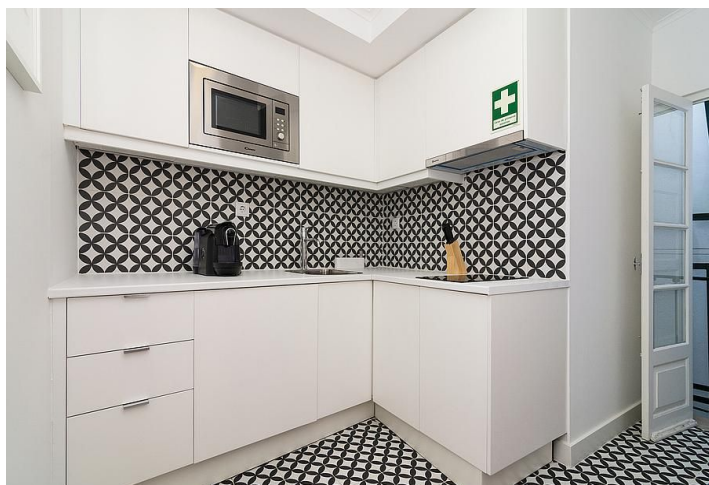
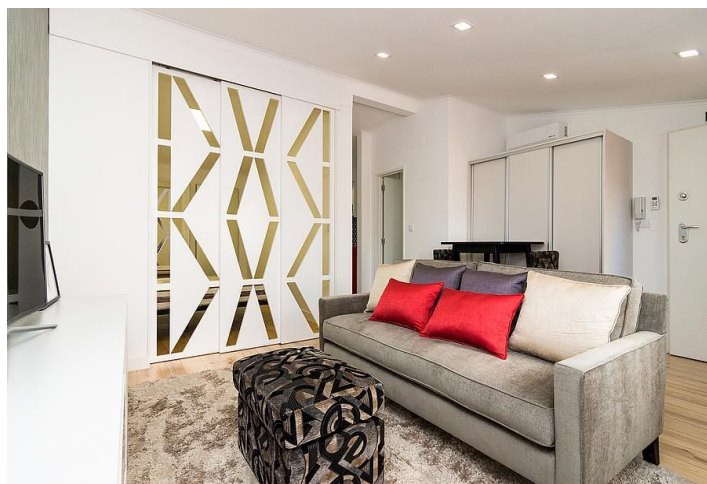




Apartment One-bedroom (2+kk)

€ 225 000 | CZK 5 657 625

42 m², Lisboa, Área Metropolitana de Lisboa, Alfama, Santa Maria Maior





Apartment One-bedroom (2+kk)

€ 225 000 | CZK 5 657 625

42 m², Lisboa, Área Metropolitana de Lisboa, Alfama, Santa Maria Maior

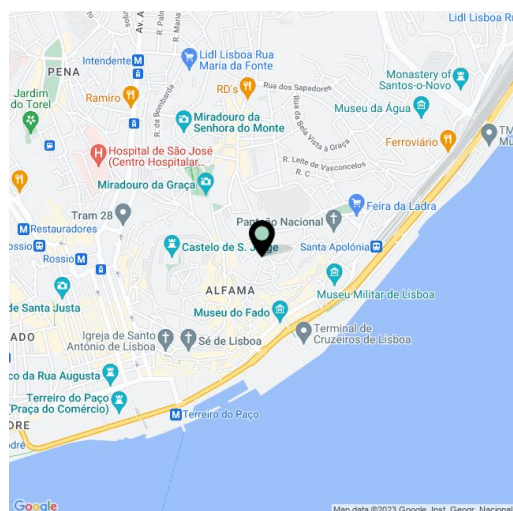
Total area	42 m ²
Parking	-
Cellar	-
PENB	G
Reference number	28877

This refurbished one-bedroom apartment is located in the heart of historic old Lisbon in the sought-after Alfama district, famous for its steep terrain with cobblestone streets lined with Old World facades leading to the Moorish São Jorge Castle.

The charming **south-facing** apartment offers a living room, a separate kitchen, a bedroom, and a bathroom (w/ shower). Features include **air-conditioning** and black & white **designer tiles** in the kitchen. The apartment is **furnished** and offers **lovely views** of the river and the terracotta rooftops of the historic center.

Fantastic opportunity to live in the historic core of Lisbon. The attractive apartment is **ideal for holiday accommodation or for pleasant living for two.**

Private gross area: 41.80 sq. m.



* Area of the unit according to the Civil Code. The area consists of the sum total area of the entire unit bounded by perimeter walls.