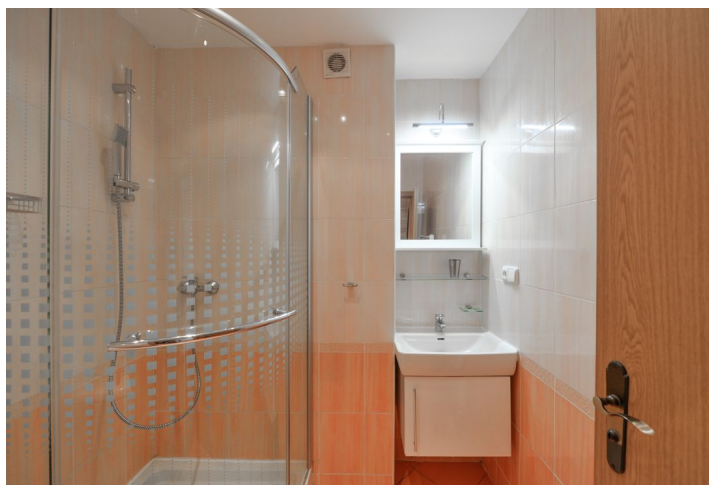




## Apartment One-bedroom (2+kk)

Rented

57 m<sup>2</sup>, Praha 5, Smíchov, V Lesíčku





## Apartment One-bedroom (2+kk)

Rented

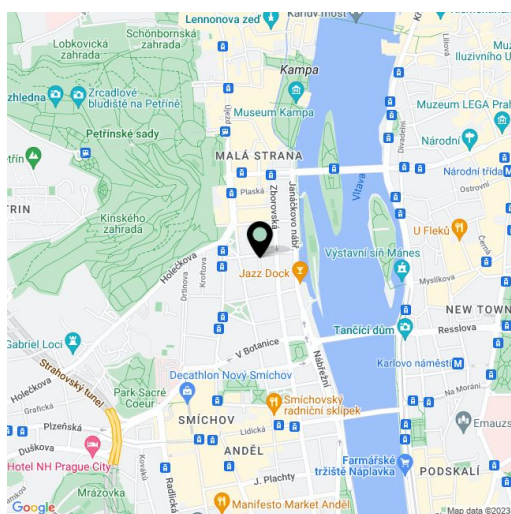
57 m<sup>2</sup>, Praha 5, Smíchov, V Lesíčku

Total area	57 m <sup>2</sup>
Parking	-
Cellar	Yes
PENB	G
Reference number	28938
Available from	Immediately

This is a newly partly renovated 1-bedroom flat on the third floor of a reconstructed traditional building with preserved architectural details, beautiful entrance, shared courtyard garden and a lift. Located in a quiet street near the Vltava embankment, Petřín Park and Kinských Garden, with quick connections to the city center (trams), and within easy reach of **Anděl** metro station and **Nový Smíchov** commercial and entertainment center.

The interior features a living room with an electric **fireplace** and a fully fitted open kitchen, one bedroom facing the green courtyard and with large built-in storage space, shower bathroom, a separate toilet with utility area, and entrance hall.

**Preserved original details**, high ceilings, large windows, laminated floors, tiles, security entry door, built-in storage, electric heating, washer, dishwasher, microwave oven, **cellar**, shared balcony in the mezzanine of the building. Deposit for service charges and water CZK 800/person/month. Electricity will be transferred to the tenant.



\* Area of the unit according to the Civil Code. The area consists of the sum total area of the entire unit bounded by perimeter walls.