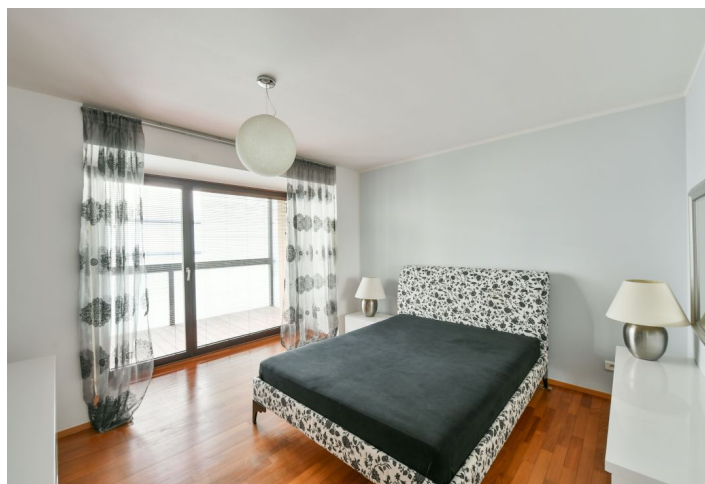




Apartment Two-bedroom (3+1)

Rented

111 m², Prague 8, Karlín, Šaldova





Apartment Two-bedroom (3+1)

Rented

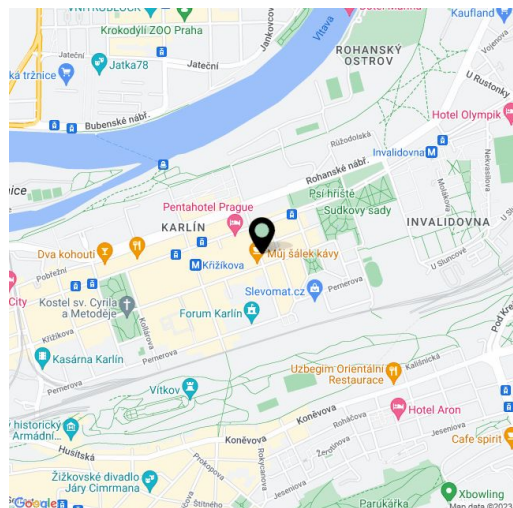
111 m², Prague 8, Karlín, Šaldova

Total area	140 m ²
Floor area*	111 m ²
Loggia	29 m ²
Parking	On-site underground garage parking space.
Garage	Yes
Cellar	Yes
PENB	G
Reference number	28964
Available from	Immediately

High standard, partially furnished 2-bedroom 2-bathroom split-level flat with two enclosed balconies, situated on the third floor of a completely reconstructed industrial building converted into the new modern development - Cornlofts Šaldova. Located in a quiet street in a rapidly developing Prague 8 area with quick connections to the city center, just three minutes from a tram stop and Křižíkova metro station. Building amenities include a lift, 24-hour security, security cameras, shared landscaped courtyard garden and underground parking.

The upper (entrance) floor includes master bedroom with an en-suite shower bathroom, second bedroom, family bathroom (bathtub, toilet), and a large entrance hall with built-in wardrobes. There is a spacious **enclosed balcony** accessible from the hall and both bedrooms. The lower level features living room with access to the second **balcony**, a fully fitted kitchen with dining area, storage room, and a guest toilet with utility area.

Quality materials and finishes, **wooden floors**, tiles, security entry door, blinds, washer, dryer, dishwasher, wine fridge, induction cooktop, TV, terrace furniture, **cellar**, chip entry to the building. The flat is oriented towards the courtyard. One **garage parking** space included. Service charges and utilities are billed separately.



* Area of the unit according to the Civil Code. The area consists of the sum total area of the entire unit bounded by perimeter walls.