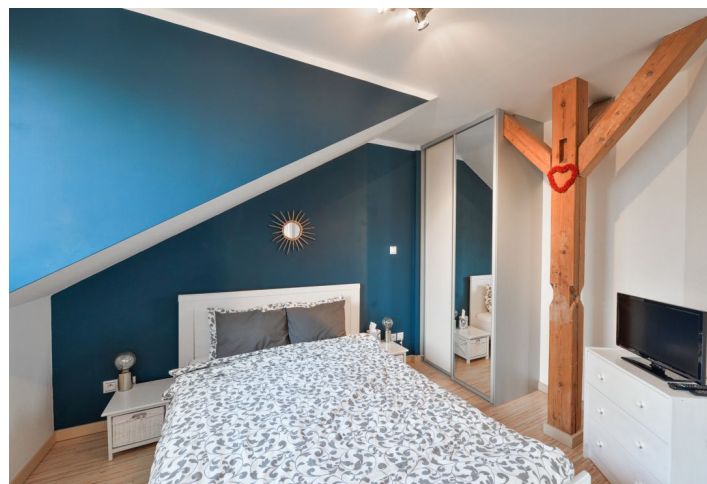




## Apartment One-bedroom (2+kk)

Rented

42 m<sup>2</sup>, Prague 6, Dejvice, Zemědělská





## Apartment One-bedroom (2+kk)

Rented

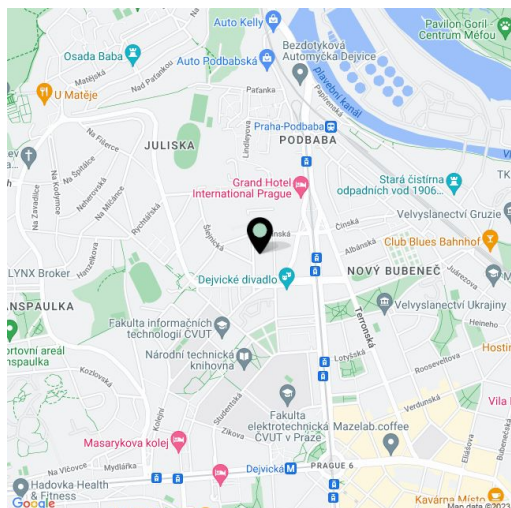
42 m<sup>2</sup>, Prague 6, Dejvice, Zemědělská

|                  |                   |
|------------------|-------------------|
| Total area       | 49 m <sup>2</sup> |
| Floor area*      | 42 m <sup>2</sup> |
| Terrace          | 7 m <sup>2</sup>  |
| Parking          | -                 |
| Cellar           | Yes               |
| PENB             | G                 |
| Reference number | 28965             |
| Available from   | Immediately       |

This renovated unfurnished 1-bedroom flat with a terrace and views of the green residential neighborhood and the International Hotel is on the fourth top floor of a well kept renovated building with a shared courtyard garden and no lift. Located on a quiet tree lined street in an attractive Dejvice area, a short walk to Dejvická metro station, and just steps to the Czech Technical University campus. Tram and bus connections, within easy reach of full public amenities, the Vltava embankment and Stromovka Park, and convenient to the airport and numerous international schools.

The interior includes a living room with a fully fitted open kitchen and **terrace** access, one bedroom with built-in wardrobes, bathroom with bathtub and toilet, and entrance hall with built-in wardrobes.

Laminated floors, tiles, security entry door, blinds, gas boiler, washer, microwave oven, **cellar**. Service charges and water CZK 1900 per month for two persons. Gas and electricity will be transferred to the tenant. Available from July 1, 2018. UNFURNISHED.



\* Area of the unit according to the Civil Code. The area consists of the sum total area of the entire unit bounded by perimeter walls.