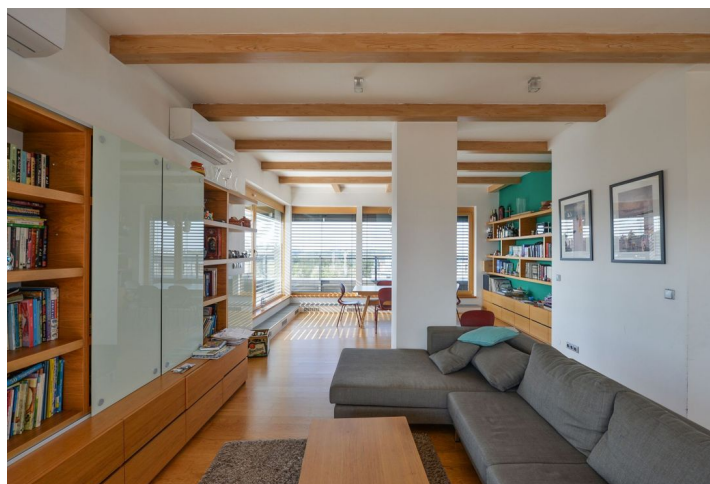




Apartment Five-bedroom (6+1)

Rented

196 m², Praha 6, Vokovice, Tibetská





Apartment Five-bedroom (6+1)

Rented

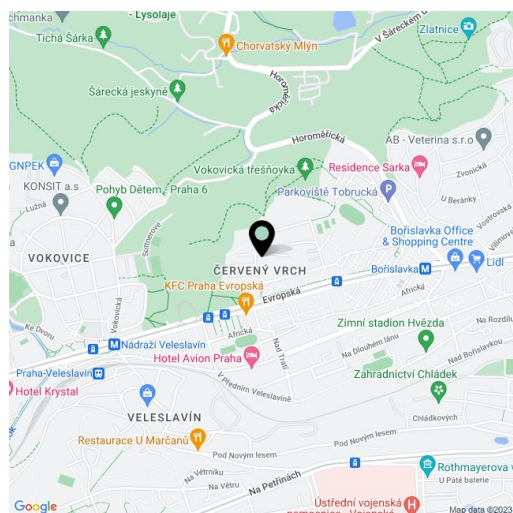
196 m², Praha 6, Vokovice, Tibetská

Total area	296 m ²
Floor area*	196 m ²
Terrace	100 m ²
Parking	Garage parking.
Garage	Yes
Cellar	Yes
PENB	G
Reference number	29021
Available from	Immediately

Benefiting from a 100 m² terrace boasting unobstructed panoramic views of the green surroundings, this is a generous unfurnished 5-bedroom 2-bathroom flat on the sixth floor in the residential project Terasy Červený Vrch with a 24/7 reception, security and underground parking. Located near the wonderful Šárka Valley, convenient to the airport and the international schools Park Lane, ISP and Riverside school. Full amenities within easy reach, just minutes to a tram stop and a few more to Bořislavka metro station, line A (ten min. to the city center).

The interior features an air-conditioned living room with access to the huge **terrace** offering beautiful views, a fully fitted eat-in kitchen with a double height ceiling, master bedroom with an en-suite bathroom (walk-in shower, bathtub, toilet) and terrace access, four bedrooms, family bathroom (bathtub, toilet), corridor with built-in wardrobes, guest toilet with laundry area, and entrance hall.

Solid wood parquet floors, tiles, built-in wardrobes and storage, automatic outdoor blinds, washer, dryer, dishwasher, two fridges, video entry phone, large **cellar**. **Two on-site underground garage parking spaces** included. Barrier free access. Common building charges, water and heating CZK 14,000 per month. Electricity is billed separately. Available from August 2020. Unfurnished.



* Area of the unit according to the Civil Code. The area consists of the sum total area of the entire unit bounded by perimeter walls.