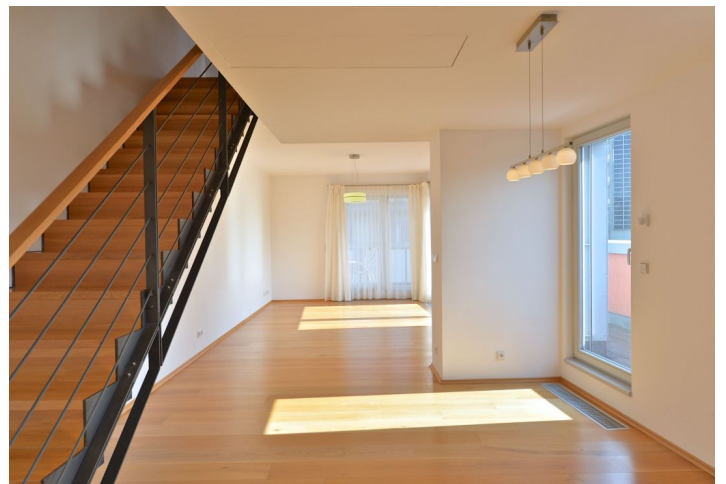




Apartment Two-bedroom (3+kk)

Rented

108 m², Prague 6, Dejvice, Kolejní





Apartment Two-bedroom (3+kk)

Rented

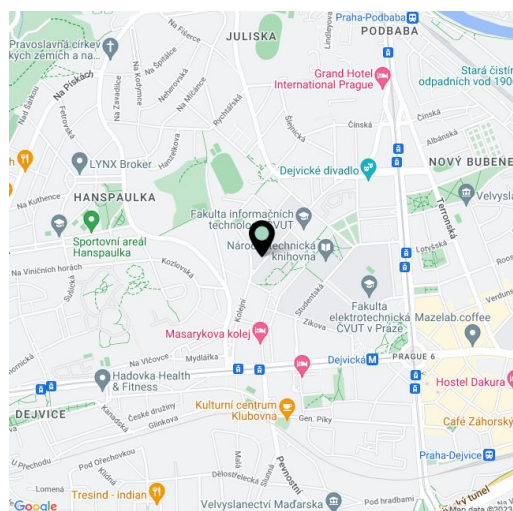
108 m², Prague 6, Dejvice, Kolejní

Total area	159 m ²
Floor area*	108 m ²
Terrace	51 m ²
Parking	Underground parking.
Garage	Yes
Cellar	Yes
PENB	G
Reference number	2909
Available from	Immediately

Comfortable 2-bedroom 2-bathroom split-level attic flat with 51 m² of terraces situated on the third floor of a modern residential project right next to the prestigious residential area of Hanspaulka. Great location just minutes from Dejvická metro station with quick access to the city center and full amenities in the area. Convenient to the airport and international schools.

The lower level is air-conditioned with living / dining room and a fully fitted open kitchen plus terrace accessible via three French doors. There is laundry / utility room, guest toilet, and entry hall with built-in wardrobes. The upper floor includes two separate bedrooms, two bathrooms (one is en-suite), and the second terrace with "green roof" - a small patch of planted garden.

Wooden and tile floors, tropical hard-wearing wood on the terraces, floor heating throughout, security entry door, washer, dryer, Miele kitchen appliances, video entry phone. Basement storage (6 m²). One underground parking space included, second one is available at an extra fee. Common building charges and deposit for utilities 6000 CZK/month. Interior: 108 m². Terraces: 51 m².



* Area of the unit according to the Civil Code. The area consists of the sum total area of the entire unit bounded by perimeter walls.

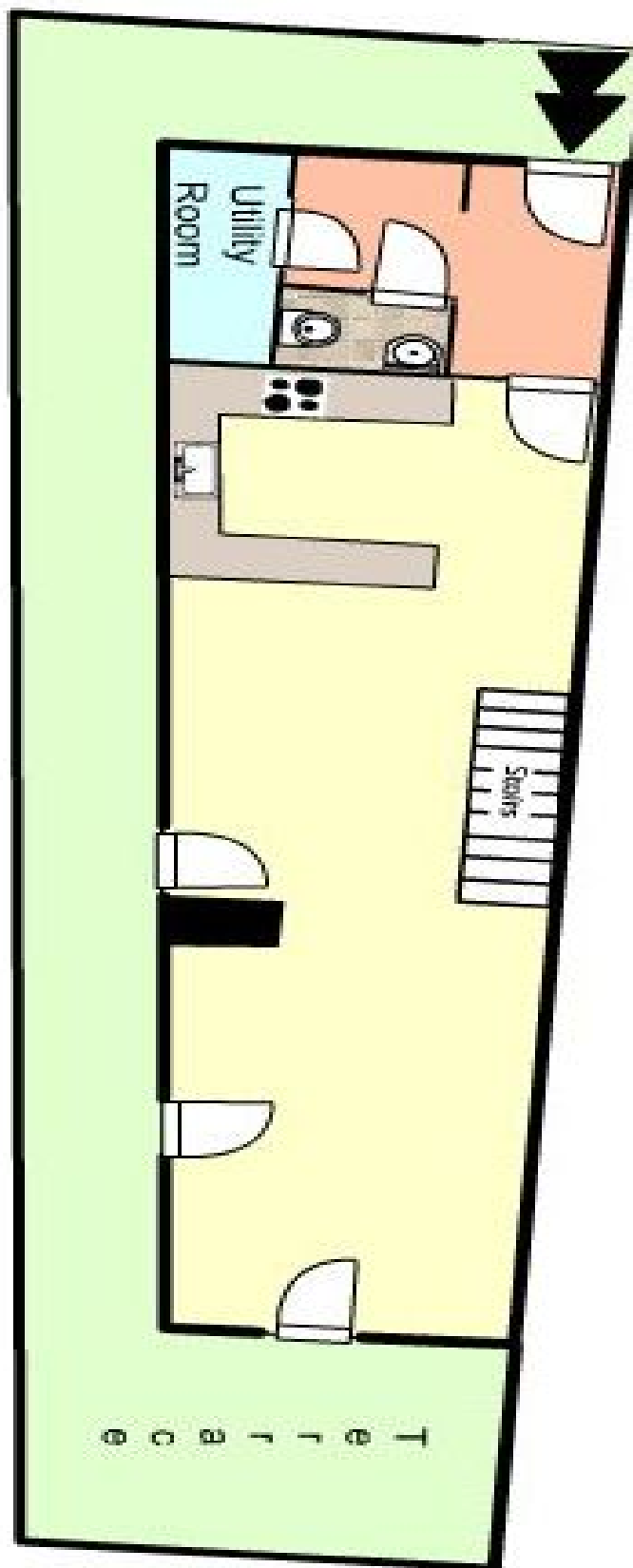


Apartment Two-bedroom (3+kk)

108 m², Prague 6, Dejvice, Kolejní

Rented

Kolejní 1st floor





Apartment Two-bedroom (3+kk)

108 m², Prague 6, Dejvice, Kolejní

Rented

