



## Office space

Prague 7, Holešovice, Argentinská

Rented



**Office space****Rented**

Prague 7, Holešovice, Argentinská

<b>Service price</b>	95 CZK monthly per m <sup>2</sup>
<b>Available area</b>	951 m <sup>2</sup>
<b>Cellar</b>	-
<b>Parking</b>	CZK 2 000 - 2 700 / ps / month
<b>PENB</b>	G
<b>Reference number</b>	29117

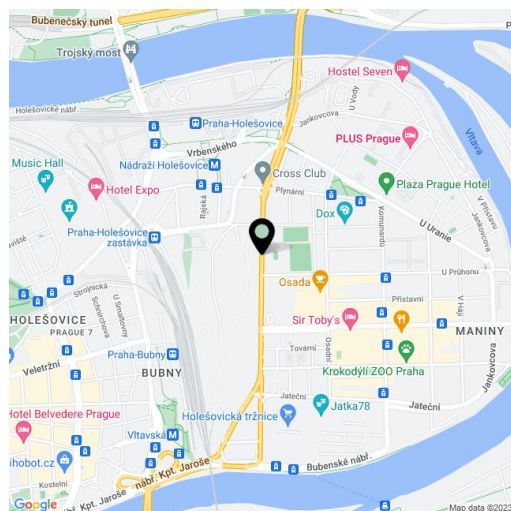
Top floor office space in a new administrative building, located on the corner of a busy artery, Argentinská Street. The project offers a fully flexible floor space of approximately 500 to 1,000 sq. m. with offices on each of the six above-ground floors.

**Location:**

Very good connection to arterial roads and the city ring road, connection to the Blanka tunnel, including access to the D1 and D8 motorways. Close to the building there are multiple bus and tram stops as well as the Nádraží Holešovice metro station (line C), train station & bus stop.

**Facilities and services:**

- 24/7 central reception
- magnetic card access to the building
- CCTV system monitoring the building and its surroundings
- flexible office space
- retail space on the ground floor
- storage areas (limited capacity)
- guest parking
- ground source heat pump
- interior blinds
- openable windows
- central air-conditioning

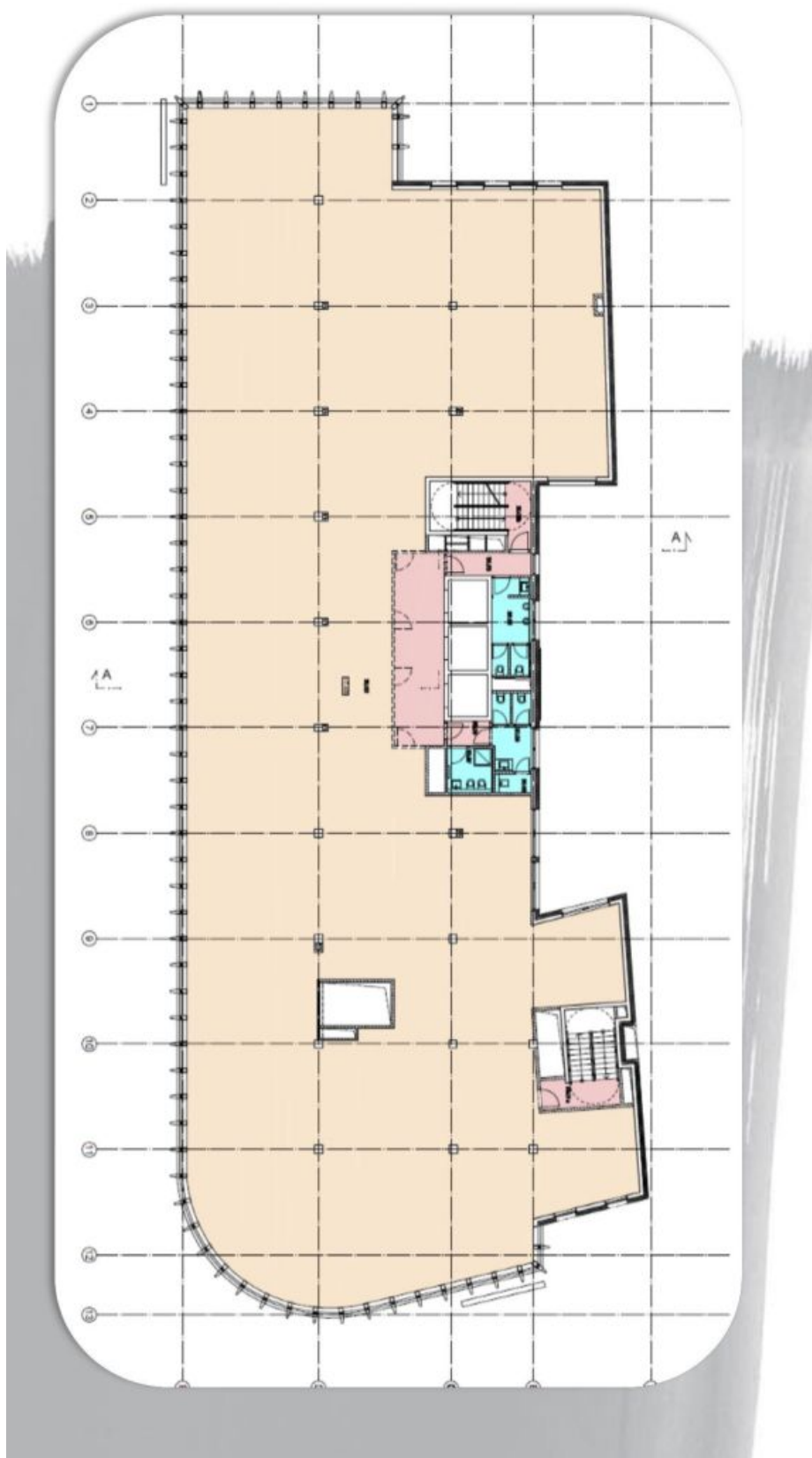
**Available from Q2 2019.**



# Office space

Prague 7, Holešovice, Argentinská

Rented





# Office space

Prague 7, Holešovice, Argentinská

Rented





# Office space

Prague 7, Holešovice, Argentinská

Rented





# Office space

Prague 7, Holešovice, Argentinská

Rented

