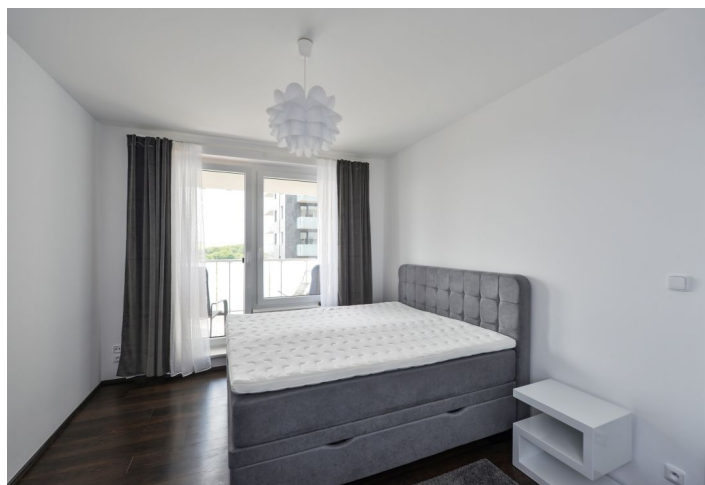




Apartment Two-bedroom (3+kk)

Rented

95 m², Praha 5, Stodůlky, Klementova





Apartment Two-bedroom (3+kk)

Rented

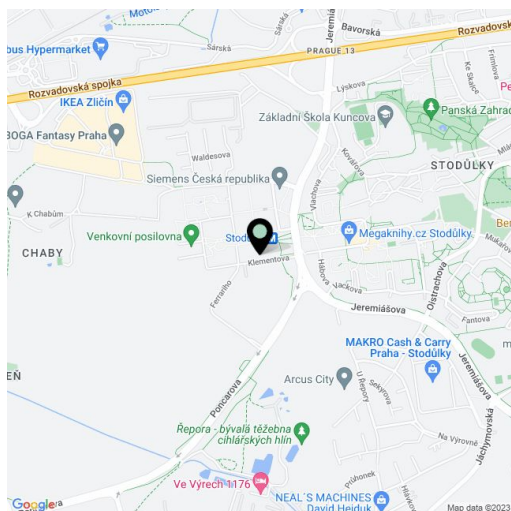
95 m², Praha 5, Stodůlky, Klementova

Total area	105 m ²
Floor area*	95 m ²
Terrace	10 m ²
Parking	Garage parking.
Garage	Yes
Cellar	Yes
PENB	G
Reference number	29210
Available from	Immediately

Highly benefiting from close proximity of Stodůlky metro station, this brand new fully furnished 2-bedroom flat with a terrace and far reaching green views is on the first floor of a new building with 24/7 manned security, camera system and underground parking. Located in the new residential complex Britská čtvrť with great amenities incl. children's playgrounds, shopping center, restaurants, post office, and medical facilities, 150 m from Stodůlky metro. Within walking distance of a vast business park incl. Vodafone, Siemens and Komerční banka buildings, and just minutes from Ikea Zličín, Tesco and more. Convenient to the German School.

The interior features living room with a fully fitted open kitchen and dining area, two separate bedrooms, bathroom with bathtub, a separate toilet, a fitted walk-in closet, and entrance hall. The **terrace** is accessed from the living room and one bedroom.

New quality equipment and furnishings, vinyl flooring, tiles, security entry door, built-in wardrobes, central heating, washer, dishwasher, induction cooktop, microwave oven, TV, garden furniture, **cellar**, pram / bike storage, lift. One **garage parking** space included. Service charges, water and heating approx. CZK 6000 per month. Electricity is billed separately.



* Area of the unit according to the Civil Code. The area consists of the sum total area of the entire unit bounded by perimeter walls.