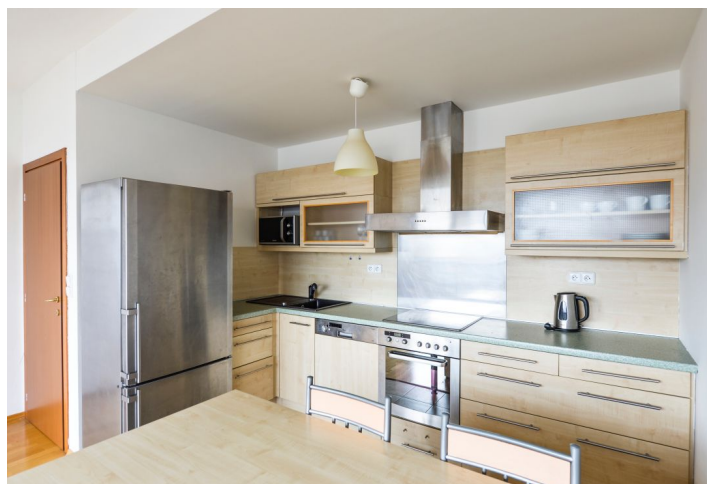




Apartment One-bedroom (2+kk)

Rented

42 m², Prague 9, Libeň, Podvinný mlýn





Apartment One-bedroom (2+kk)

Rented

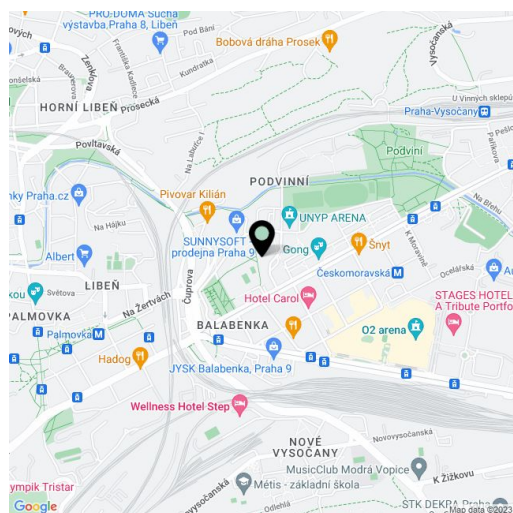
42 m², Prague 9, Libeň, Podvinný mlýn

Total area	47 m ²
Floor area*	42 m ²
Balcony	5 m ²
Parking	Garage parking.
Garage	Yes
Cellar	Yes
PENB	G
Reference number	29541
Available from	Immediately

Fully furnished 1-bedroom flat with a balcony and green views, situated on the fourth top floor of a modern residential project with lots of surrounding greenery - a park with a river and a bike path, underground parking and 24/7 security service. Perfect setting just a short walk to Českomoravská metro station and tram links, and a 10-15 minute drive to the city center.

The sunny interior includes a living room with a fully fitted open kitchen and floor-to-ceiling windows with access to the balcony, one bedroom, bathroom with a walk-in shower, sink and toilet, and entrance hall.

Wooden floors, tiles, security entry door, central heating, sofa bed, washing machine, dishwasher, microwave oven, TV, video entry phone, cellar, lift. One garage parking space included. South-West oriented. Common building charges (incl. security and greenery maintenance), heating and water approx. CZK 2400/month. Deposit for electricity approx. CZK 1200/month.



* Area of the unit according to the Civil Code. The area consists of the sum total area of the entire unit bounded by perimeter walls.



Apartment One-bedroom (2+kk)

42 m², Prague 9, Libeň, Podvinný mlýn

Rented

