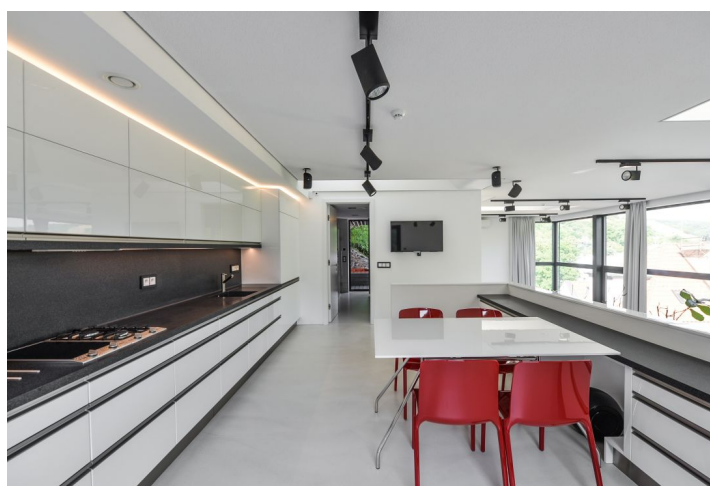




House One-bedroom (2+kk)

€ 3 171 | CZK 80 000

139 m², Prague 6, Dejvice, V Šáreckém údolí





House One-bedroom (2+kk)

€ 3 171 | CZK 80 000

139 m², Prague 6, Dejvice, V Šáreckém údolí

Plot	779 m²
Foot print	109 m²
Garden	670 m²
Parking	Double garage.
Garage	Yes
Cellar	Yes
Service price	Utilities are billed separately.
PENB	G
Reference number	29552
Available from	Immediately

Luxury villa equipped with top-of-the-line modern technologies, a sauna, Jacuzzi, and a roof terrace offering breathtaking views. With a minimalist design, partly furnished, with a terraced garden and parking, the house offers unique views of the surrounding greenery. Quality living in the charming Šárecké Valley surrounded by forested hills and beautiful residences. A peaceful location with quick connections to the center, the airport, and international schools. Just a few bus stops to the Dejvická metro station with full amenities in the area, and a minutes' from a very popular restaurant with outdoor seating by a brook and a green slope.

The home is accessible via a number of hillside stairs. The ground floor includes one bedroom with an en-suite bathroom with glass walls (walk-in shower, double sink, toilet) and garden access, a utility room, and an entrance hall. The first floor consists of a huge living area with a double height ceiling, full glass walls, and superb light. The top level features a gallery with a fully fitted kitchen and dining area, a shower bathroom with toilet, a **sauna**, and access to the covered terrace with a **Jacuzzi** and shower. The **roof terrace** at the top of the house offers magnificent green panoramic views.

Air-conditioning, heat ventilation system, Pandomo polished concrete flooring, **slow-burning stove**, built-in wardrobes and storage, French windows, **top quality sound system**, Bowers & Wilkins loudspeakers, automatic exterior blinds, gas heating, quality kitchen with Miele appliances, kitchenware, TVs, video entry phone, alarm connected to a security agency, camera system. Double **garage** plus parking on the plot.

