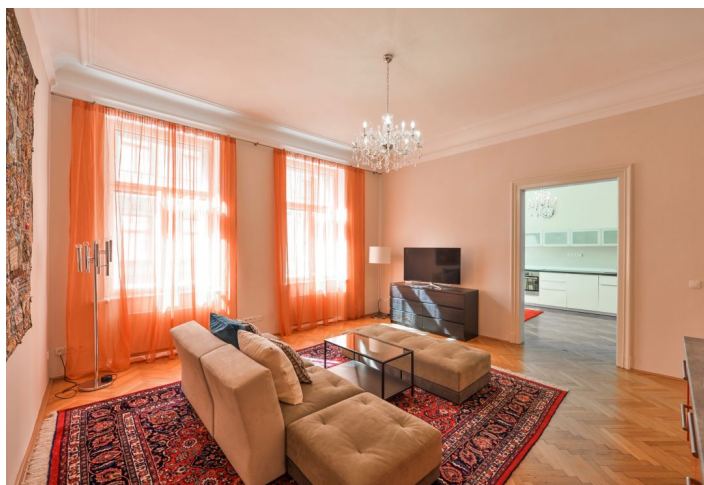
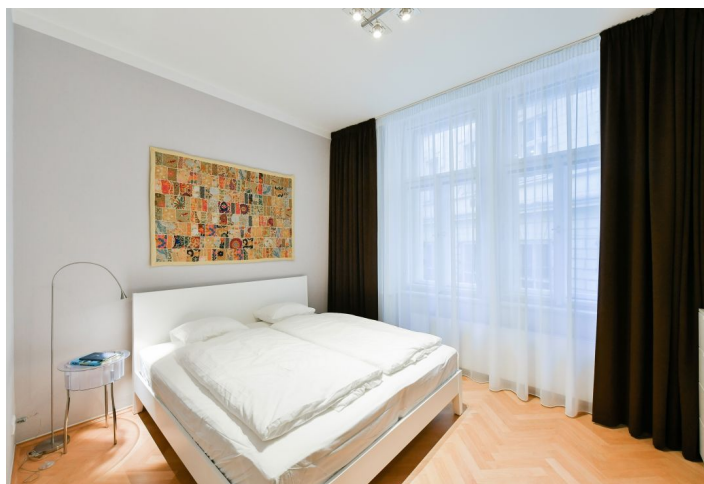




Apartment One-bedroom (2+1)

Rented

81 m², Prague 1, Nové Město, Truhlářská





Apartment One-bedroom (2+1)

Rented

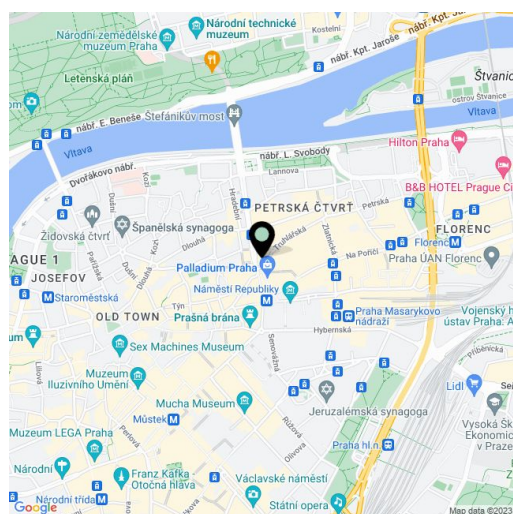
81 m², Prague 1, Nové Město, Truhlářská

| | |
|------------------|-------------------|
| Total area | 81 m ² |
| Parking | - |
| Cellar | - |
| PENB | D |
| Reference number | 29576 |
| Available from | Immediately |

Completely renovated furnished 1-bedroom flat on the first floor of a classic late 19th century building, superbly renovated with attention to detail and retrofitted with a lift. Offering modern living standard, high quality finishes and a lively central location, the flat is located in a quiet street just steps from Náměstí Republiky Square with the Palladium and Kotva shopping malls, tram stops and metro station. Within walking distance of the Vltava riverbank, the Old Town Square as well as Wenceslas Square.

The interior features a spacious fully fitted kitchen with dining area, a living room, one bedroom facing the quiet courtyard, an en-suite bathroom (walk-in shower, sink, toilet), a large fitted **walk-in closet** with utility area, and an entrance hall with clothes closet.

Preserved original features, high ceilings, large windows, **solid wood parquet floors**, tiles and vinyl, interior double doors, security entry door, gas boiler, washing machine. Fully furnished kitchen with all utensils, dishwasher, fridge, freezer, stove, fan oven and hood. TV with SAT reception, WiFi Internet (included). Service charges and deposit for utilities CZK 4500/month for one person. Available from June 2022.



* Area of the unit according to the Civil Code. The area consists of the sum total area of the entire unit bounded by perimeter walls.



Apartment One-bedroom (2+1)

81 m², Prague 1, Nové Město, Truhlářská

Rented

