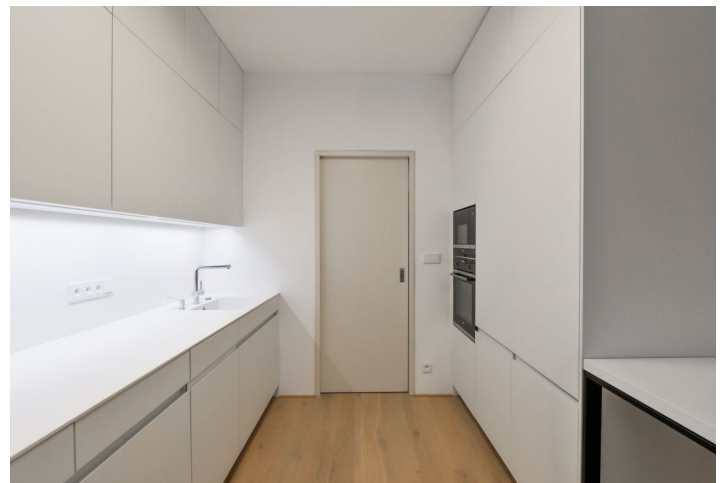




House Six-bedroom (7+kk)

Rented

539 m², Prague 6, Dejvice





House Six-bedroom (7+kk)

Rented

539 m², Prague 6, Dejvice

Usable area	539 m ²
Plot	878 m ²
Foot print	168 m ²
Garden	710 m ²
Floor area	510 m ²
Balcony	9 m ²
Terrace	20 m ²
Parking	Double garage and parking on the plot.
Garage	Yes
Cellar	Yes
Service price	Monthly deposit for utilities and garden maintenance CZK 10,500. Electricity and gas are paid separately.
PENB	G
Reference number	29642
Available from	Immediately

Benefiting from a prestigious location, a mature landscaped garden, a sauna, and an elevator, this high standard traditional villa that has been meticulously renovated is situated on a quiet street in the highly sought-after Hanspaulka residential neighborhood, just moments from the wonderful greenery of Šárka Valley. A location with quick access to the city center and full amenities, a few minutes from the Bořislavka metro station, and three tram stops from the Dejvická metro. Convenient to the airport and Prague 6 international schools (a few min. drive to the ISP school in Nebušice).

The main floor features a comfortable living room with a **fireplace**, dining area, fully fitted and equipped open plan kitchen, and **terrace**. There is an adjacent office, toilet, walk-in closet, and a spacious entrance hall. The first floor includes three bedrooms, an en-suite bathroom (w/ a shower); a bathroom with a bathtub, a walk-in closet, a **terrace**, and a large hall. The second floor offers two attic bedrooms, two en-suite bathrooms (w/ showers), and a hall. The semi-basement offers a wellness area with a **sauna**, shower, toilet, access to the terrace/garden, a guest bedroom with a bathroom (w/ a shower), a utility area, two storage rooms, and access to the garage.

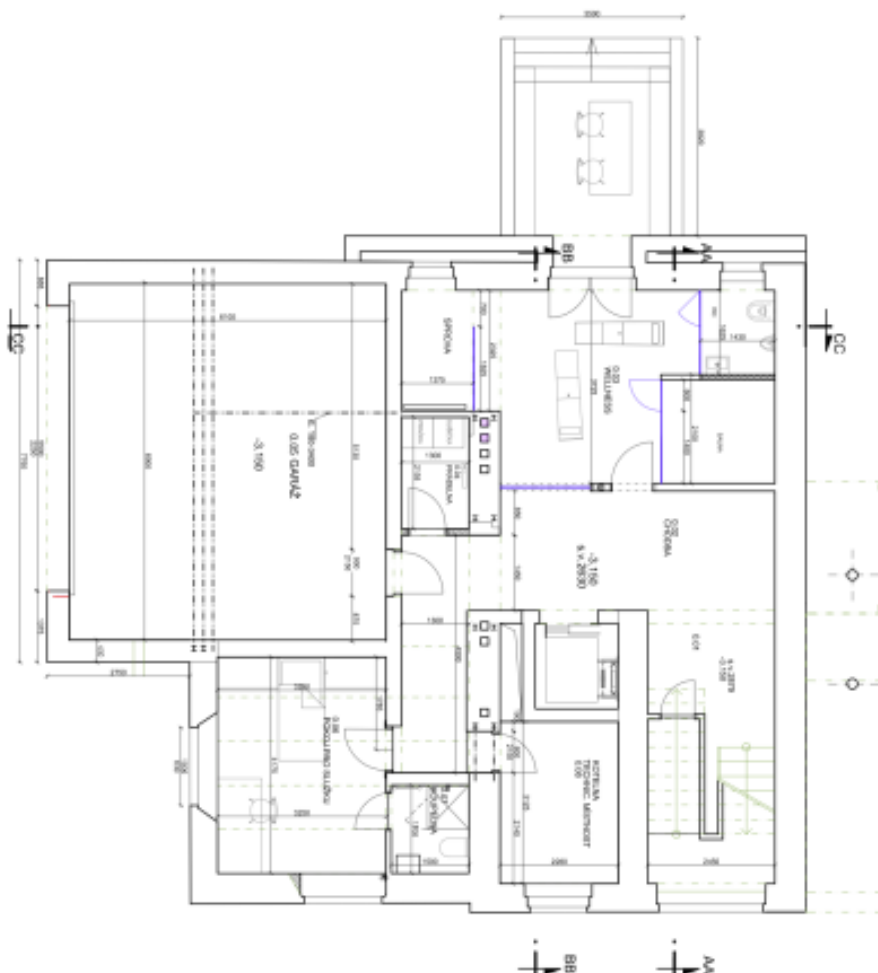
Green views, **air-conditioning**, hardwood floors, tiles, built-in wardrobes and storage, roller blinds, gas boiler, induction cooktop, dishwasher, alarm, video entry phone. **Double garage** and parking on the plot.



House Six-bedroom (7+kk)

539 m², Prague 6, Dejvice

Rented

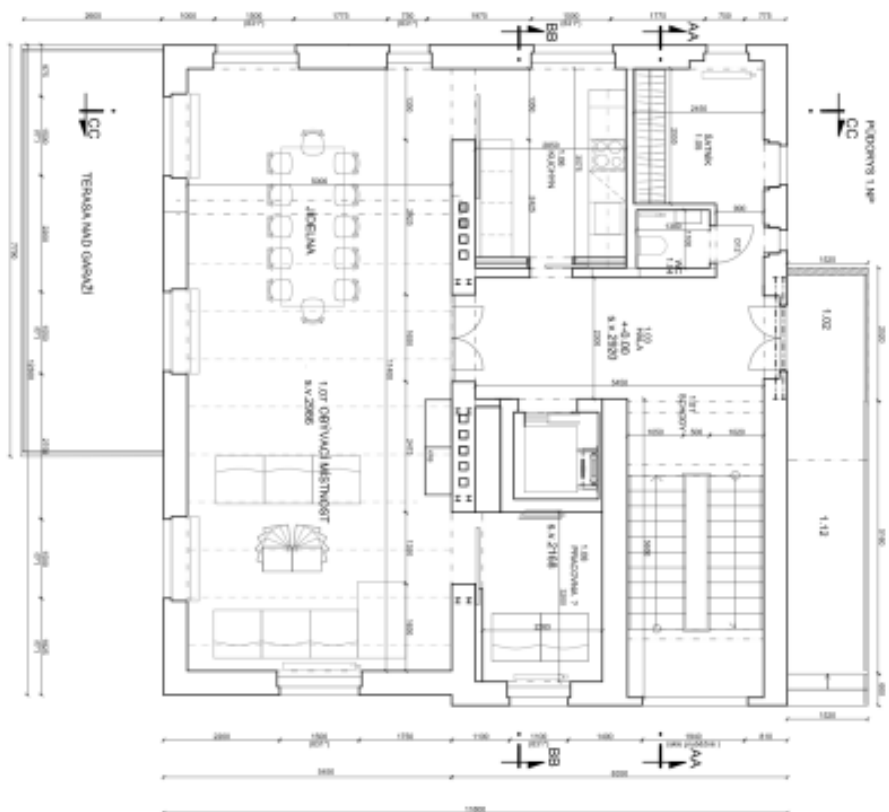




House Six-bedroom (7+kk)

539 m², Prague 6, Dejvice

Rented

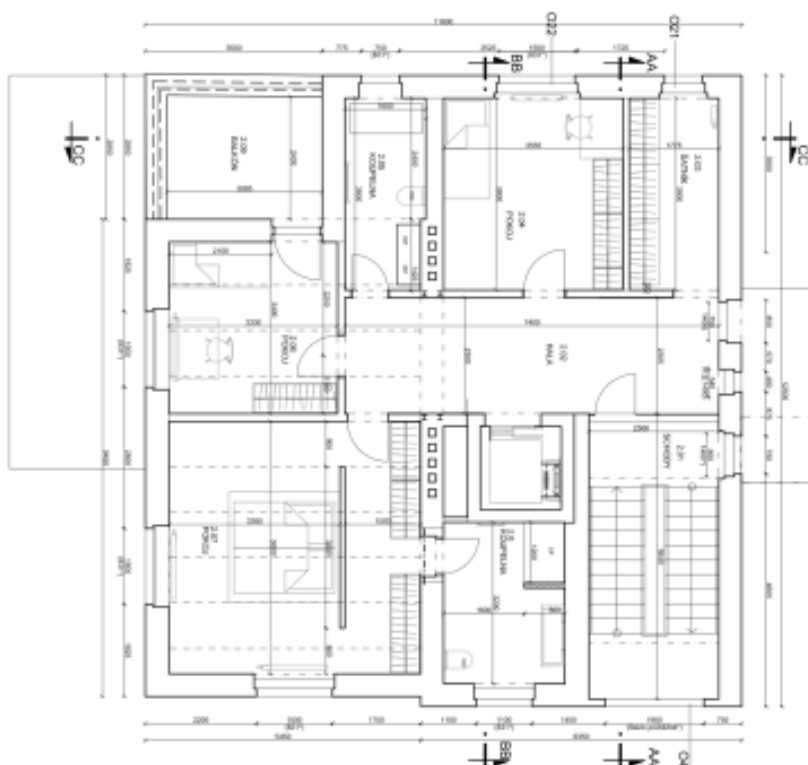




House Six-bedroom (7+kk)

539 m², Prague 6, Dejvice

Rented





House Six-bedroom (7+kk)

539 m², Prague 6, Dejvice

Rented

