



House Seven-bedroom (8+kk)

Sold

472 m², Prague 6, Nebušice, K Cíli





House Seven-bedroom (8+kk)

Sold472 m², Prague 6, Nebušice, K Cíli

Plot	1 067 m ²
Foot print	209 m ²
Garden	858 m ²
Parking	Double garage.
Garage	Yes
Cellar	Yes
PENB	B
Reference number	29654

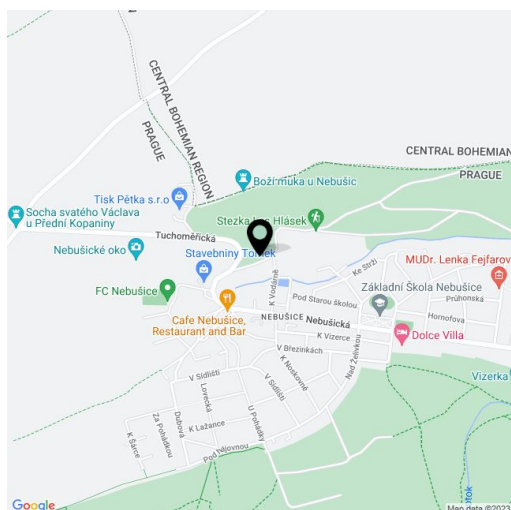
Bright and airy modern family house with indoor swimming pool, sauna and breathtaking view stands in a quiet outskirts of Prague 6 near the natural park. The location in a blind street and orientation to the garden with grown trees provides complete privacy.

The layout of the ground floor consists of a generous living room with an open kitchen and a **terrace**, an entrance hall with a walk-in wardrobe and a toilet and a staircase to the floor. Here is the master bedroom with an en-suite bathroom, another 3 bedrooms, study, 3 walk-in wardrobes, a bathroom, a toilet and a utility room. In the basement at the garden level, there is a **separate apartment** for guests with own entrance (living room, bedroom with walk-in wardrobe and bathroom), **indoor swimming pool with counterflow**, sauna, toilet, laundry/storage room and utility room.

Interior includes **parquet flooring**, tiled heated floors in the bathroom and by the pool. A large-format euro windows with double glazing and outdoor blinds provide plenty of light. The house has an **electronic security system**. Parking in **heated double garage**.

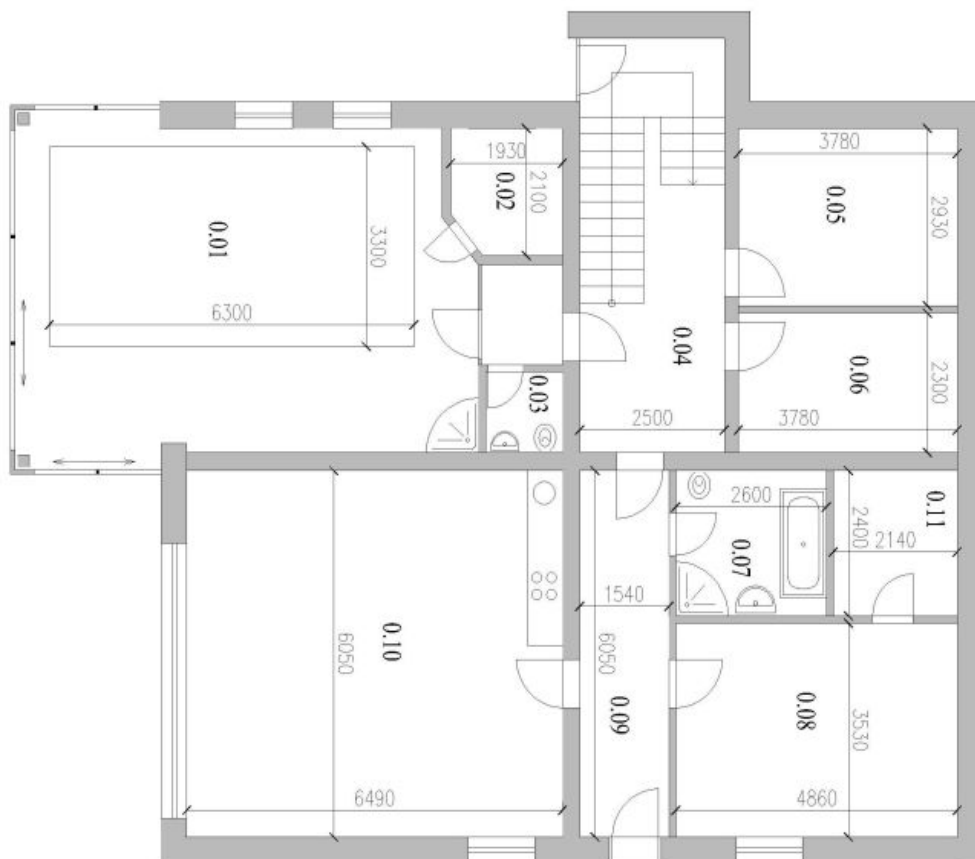
The elevated position allows beautiful views of the local church of St. Cyril and Methodius. The house is located near the supermarket, post office, municipal authority, pharmacy, kindergarten and 2 elementary schools. A short drive or bus is also the **prestigious international ISP school**. There are bus connections to the A Bořislavka (7 minutes) or Dejvická metro stations. Ideal location for quick travels to the airport. Almost at the house begins **Šárka-Lysolaje nature park** with hiking and cycling trails.

Interior 472 m², built-up area 209 m², garden 858 m², plot 1067 m².



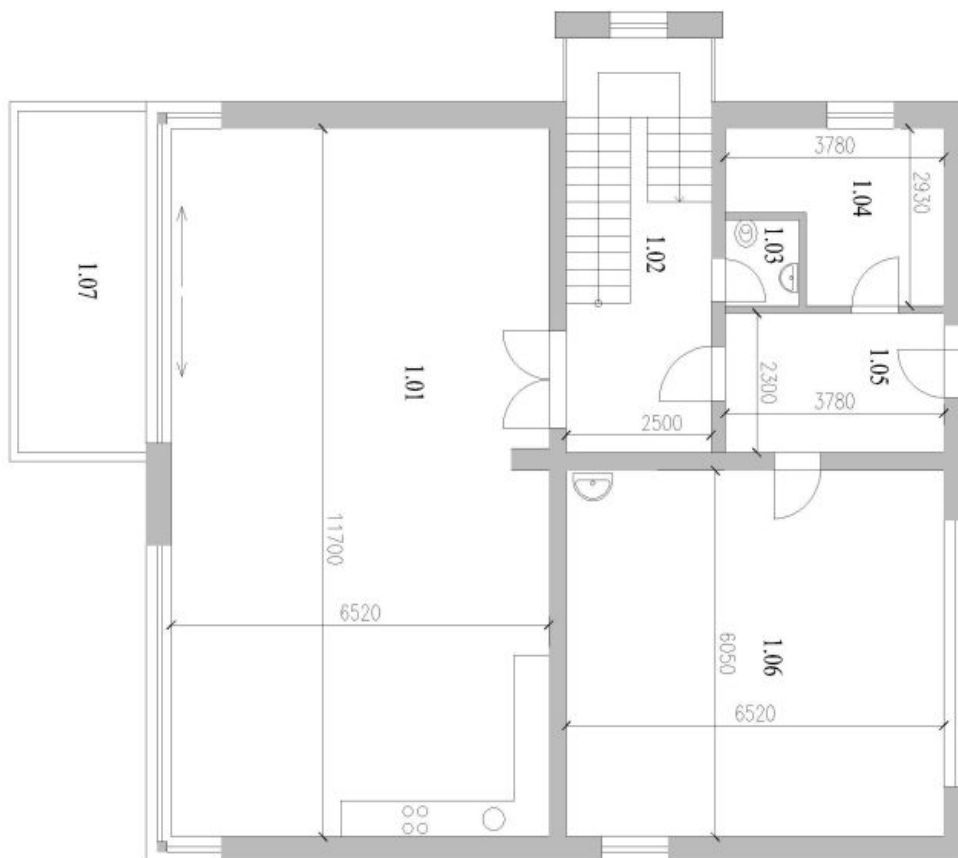


House Seven-bedroom (8+kk)

472 m², Prague 6, Nebušice, K Čili**Sold**

1. PP - Legenda místnosti:

Označení	Účel místnosti	Plocha m ²	Povrch
0.01	Bazén	44,4	Dlažba
0.02	Sauna	3,7	Dlažba
0.03	We	1,6	Dlažba
0.04	Schodiště	17,2	Dlažba
0.05	Komora	11,0	Dlažba
0.06	Techn. místnost	8,6	Dlažba
0.07	Koupelna	7,0	Dlažba
0.08	Pokoj	17,0	Parquet
0.09	Chodba	9,3	Parquet
0.10	Pokoj + kk	39,5	Parquet
0.11	Komora	5,2	Parquet
Plocha celkem : 164,5 m ²			

**House Seven-bedroom (8+kk)**472 m², Prague 6, Nebušice, K Čili**Sold****1. NP - Legenda místnosti:**

Orzáček	Účel místnosti	Plocha m ²	Povrch
1.01	Pokoj + kk	76,0	Parquet
1.02	Schodiště	17,1	Parquet
1.03	WC	1,8	Dlažba
1.04	Spina	8,9	Parquet
1.05	Vstupní hala	8,7	Parquet
1.06	Garáž	39,5	Dlažba
1.07	Terasa	12,4	Dřev. rošt

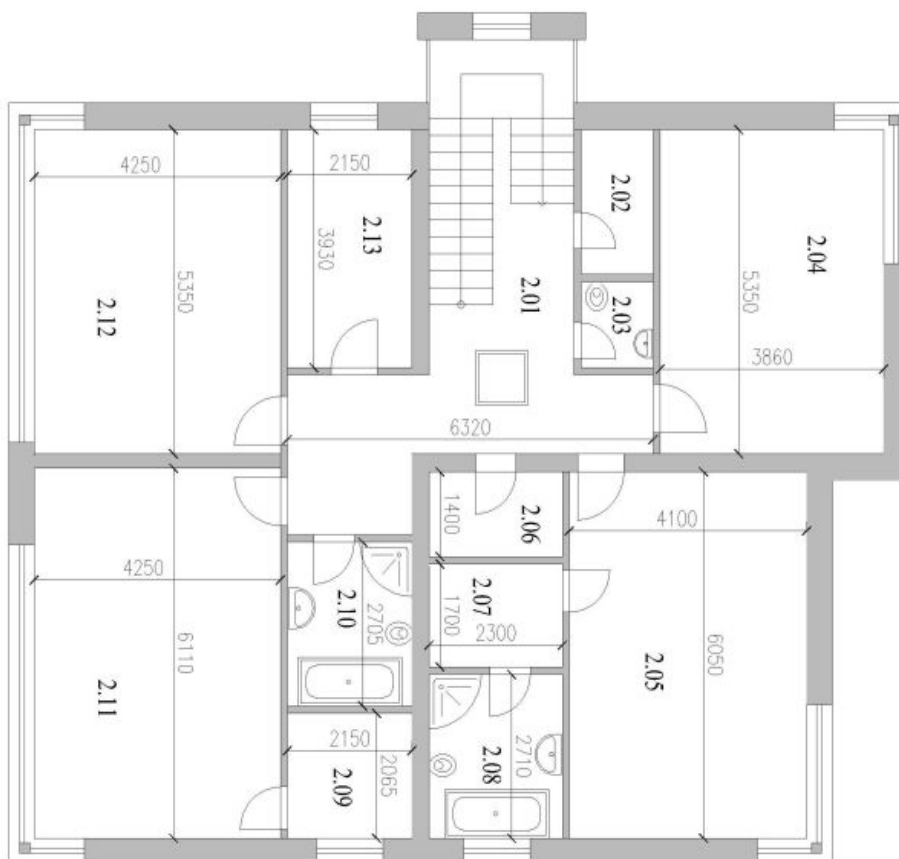
Plocha celkem bez terasy : 132,0 m² + 12,4 m² terasa



House Seven-bedroom (8+kk)

472 m², Prague 6, Nebušice, K Cíli

Sold



2. NP - Legenda místností:

Označení	Uzel místnosti	Plocha m ²	Povrch
2.01	Schodiště	25,7	Parkey
2.02	Komora	2,9	Parkey
2.03	Wc	1,5	Dlažba
2.04	Pokoř	20,8	Parkey
2.05	Ložnice	24,9	Parkey
2.06	Samna	3,2	Parkey
2.07	Samna	3,9	Parkey
2.08	Koepelna	6,2	Dlažba
2.09	Samna	4,4	Parkey
2.10	Koepelna	5,8	Dlažba
2.11	Pokoř	25,9	Parkey
2.12	Ložnice	22,8	Parkey
2.13	Pokoř	8,0	Parkey
Plocha celkem :		156,0 m ²	