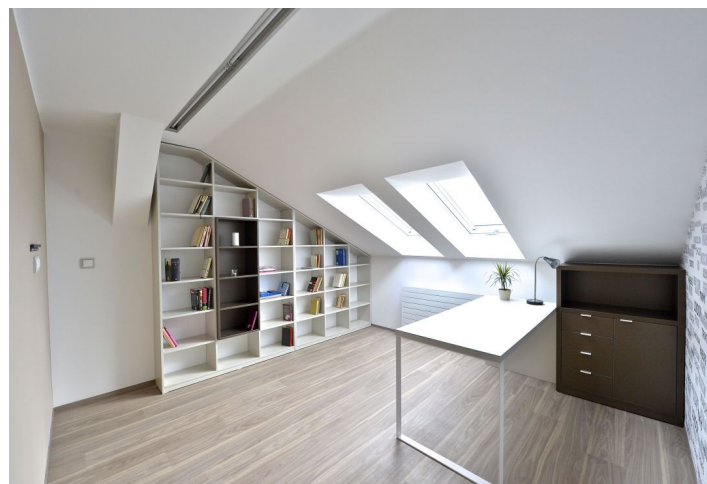
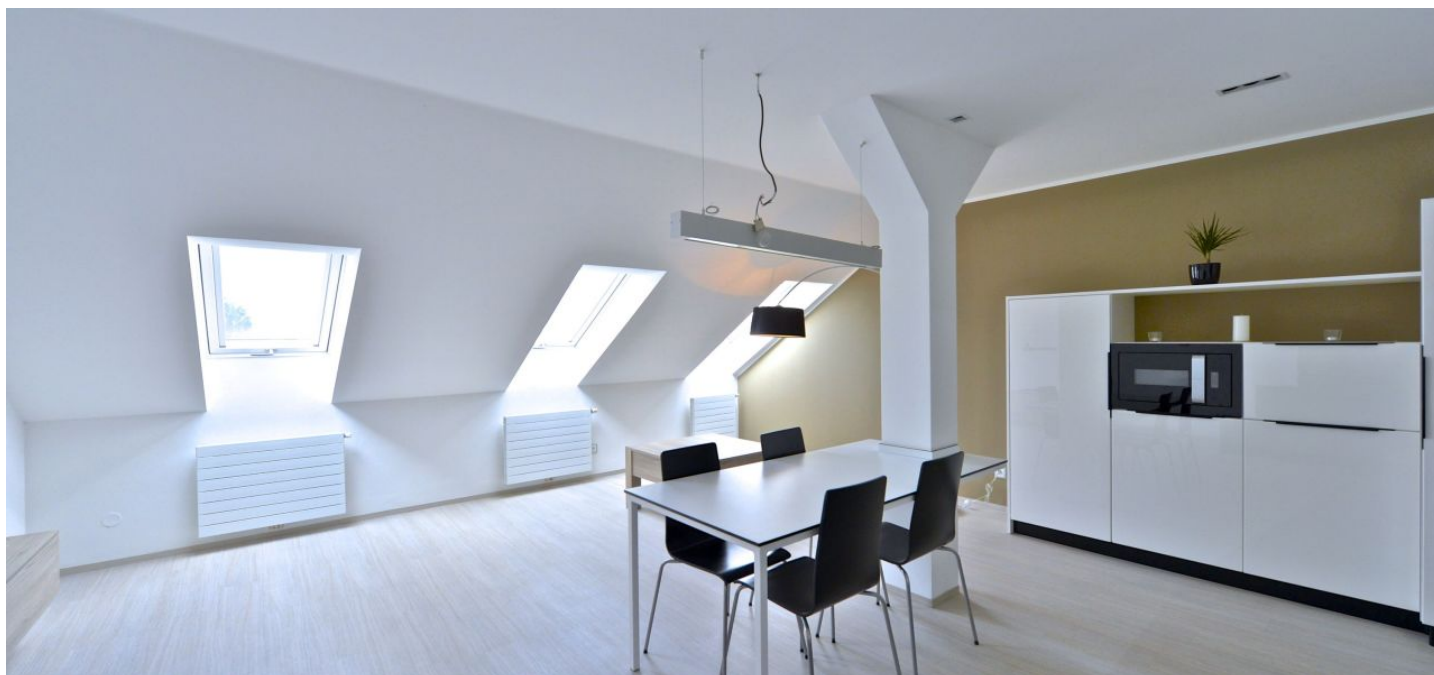




Apartment Two-bedroom (3+kk)

Rented

90 m², Prague 7, Holešovice, Ortenovo náměstí





Apartment Two-bedroom (3+kk)

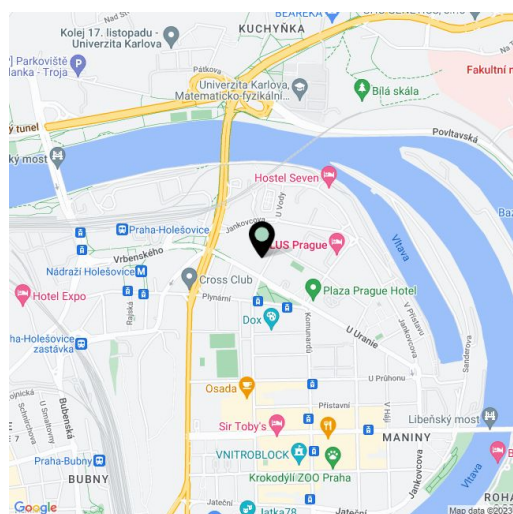
Rented90 m², Prague 7, Holešovice, Ortenovo náměstí

| | |
|------------------|-------------------|
| Total area | 90 m ² |
| Parking | - |
| Cellar | Yes |
| PENB | G |
| Reference number | 29723 |
| Available from | Immediately |

New 2-bedroom split-level attic apartment furnished with design furniture, situated on the 6th floor of a completely renovated residential building with a lift. Located in the dynamically growing, popular area of Holešovice, Prague 7, moments from a tram and bus stop, one stop from Nádraží Holešovice metro station and a few more from Vltavská metro. Quiet location with quick access to the city center and great amenities in the area, incl. the DOX - Center for Contemporary Art, La Fabrika Theater, kindergartens, schools, shopping, restaurants, bistros, fitness center, tennis hall, bus and train station, and more.

The lower level includes an open-plan living room with a fully fitted kitchen and dining area, **walk-in closet**, and a separate toilet. The upper floor offers one bedroom, a study (or second bedroom), bathroom with a double walk-in shower and toilet, and utility room.

Built-in wardrobes and storage, tile and Quick-Step vinyl floors, Roto roof windows, custom made designer furniture, electrically operated windows in the bedroom, security entry door, washing machine, alarm, wiring for air-conditioning, 2 m² **cellar**, panoramic lift in the building. Service charges and utilities approx. CZK 4000 per month including internet.



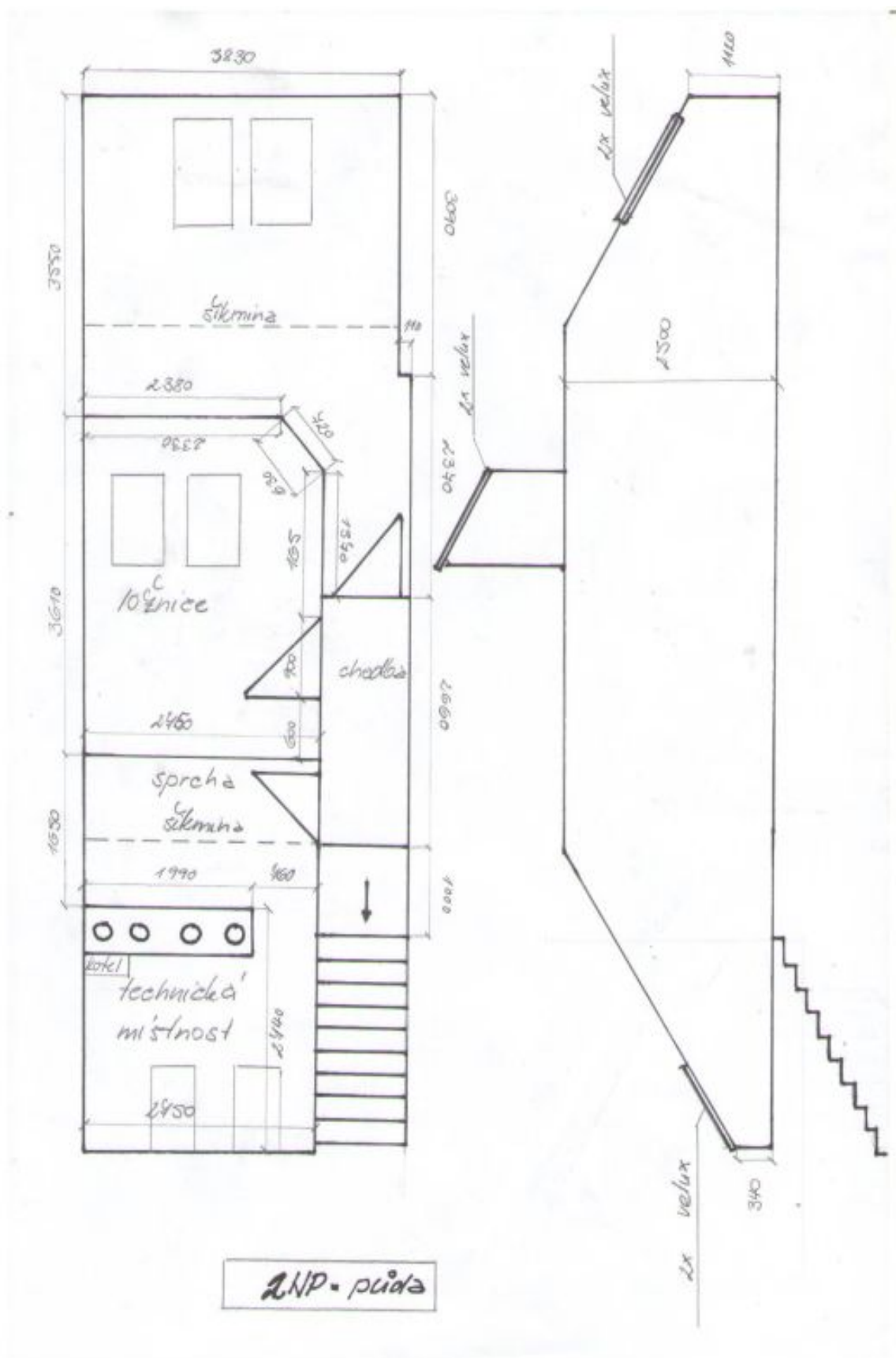
* Area of the unit according to the Civil Code. The area consists of the sum total area of the entire unit bounded by perimeter walls.



Apartment Two-bedroom (3+kk)

Rented

90 m², Prague 7, Holešovice, Ortenovo náměstí





Apartment Two-bedroom (3+kk)

Rented

90 m², Prague 7, Holešovice, Ortenovo náměstí

