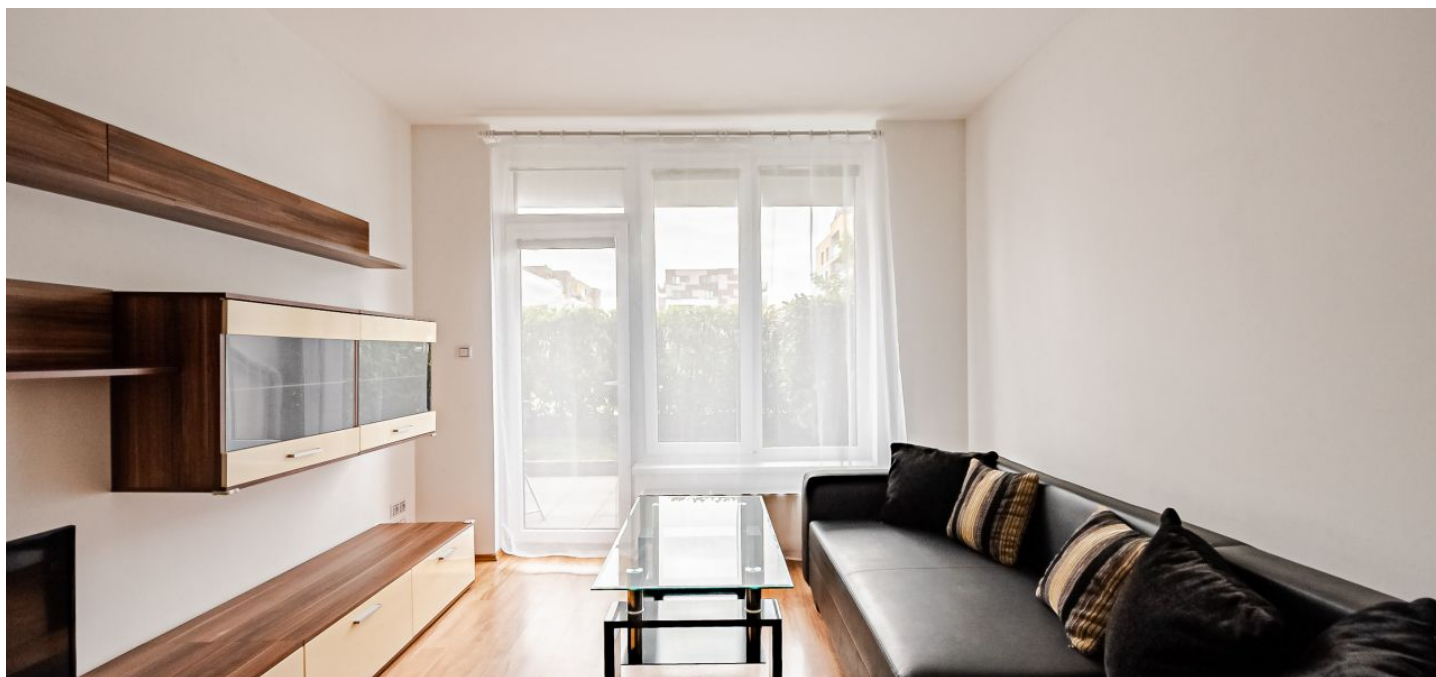




Apartment One-bedroom (2+kk)

Rented

59 m², Prague 5, Stodůlky, Svitákova





Apartment One-bedroom (2+kk)

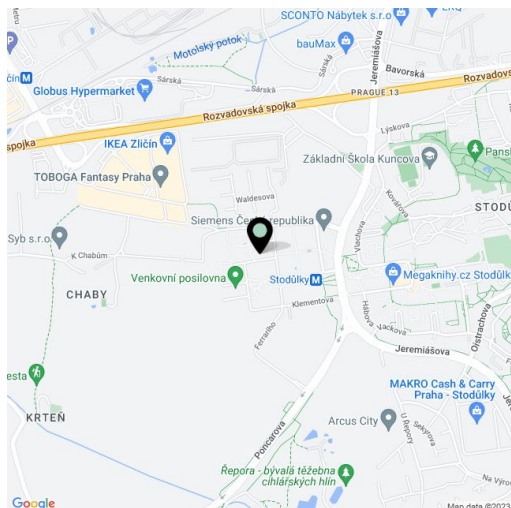
Rented59 m², Prague 5, Stodůlky, Svitákova

Total area	59 m ²
Garden	27 m ²
Parking	Garage parking.
Garage	Yes
Cellar	-
PENB	C
Reference number	29841
Available from	Immediately

Hugely benefiting from close proximity to the Stodůlky metro station, this completely furnished and equipped 1-bedroom apartment with a terrace/garden is on the ground floor of a recently built building with underground parking. Located in the new Britská čtvrť residential complex with 24/7 manned security and great amenities incl. children's playgrounds, a shopping center, restaurants, a post office, medical facilities, just a min. walk to the Stodůlky metro with quick access to the city center. Within walking distance of a vast business park that incl. Vodafone, Siemens, and Komerční banka buildings, and just minutes from Ikea Zličín, Tesco, and more.

The interior features a living room with a fully fitted open plan kitchen and access to the **terrace/garden**, one bedroom with a spacious **walk-in closet**, a bathroom (bathtub, sink, toilet), a storage room, and an entrance hall. The unit faces the courtyard.

Laminate floors, tiles, security entry door and windows, blinds, central heating, sofa bed, Miele washer and dryer, dishwasher, microwave oven, kitchenware, bed linen, TV, garden furniture, elevator, chip entry to the building. One **garage parking** space included. Deposit for service charges, water, and heating CZK 4,000 per month. Electricity will be transferred to the tenant. Available from September 2022, maybe earlier upon agreement.



* Area of the unit according to the Civil Code. The area consists of the sum total area of the entire unit bounded by perimeter walls.



Apartment One-bedroom (2+kk)

59 m², Prague 5, Stodůlky, Svitákova

Rented

Byt 2kk – 85,3 m² z toho 26,6 Terasa s predzahrádkou – Orientace bytu na JIH

