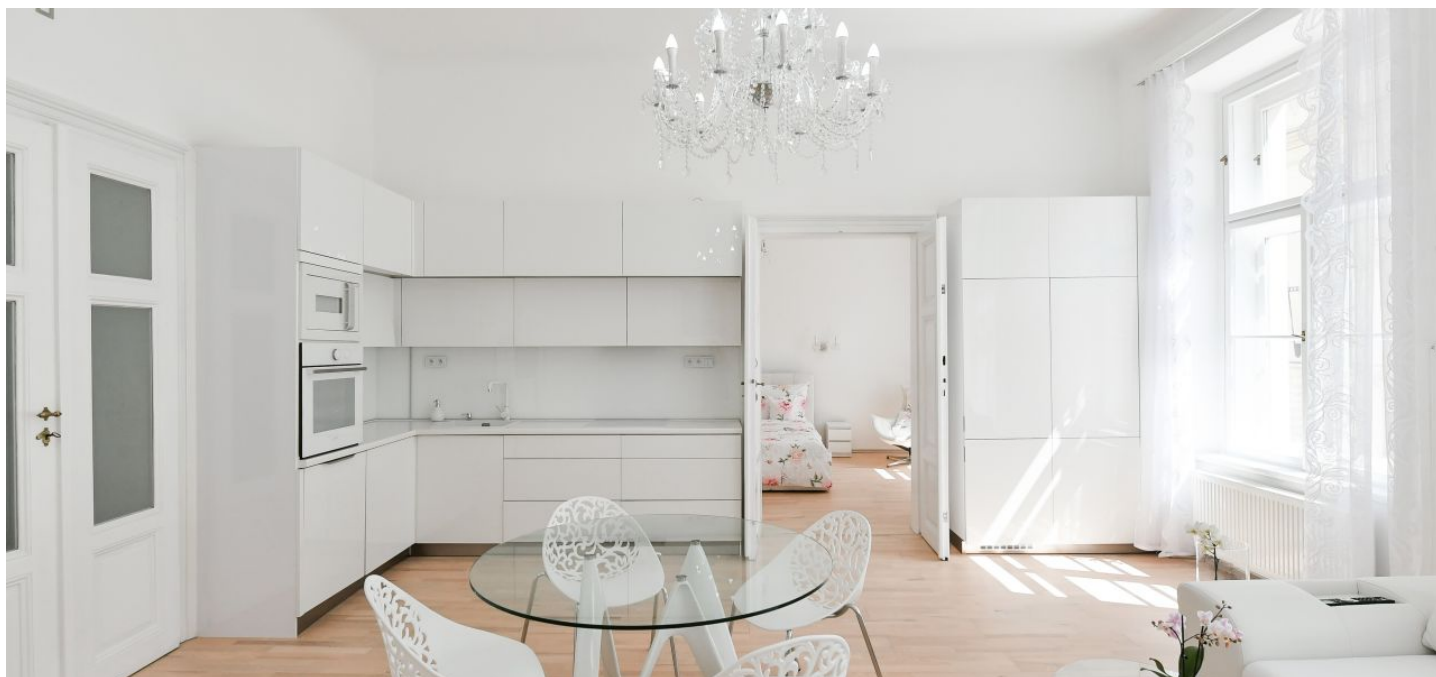




## Apartment One-bedroom (2+kk)

Rented

75 m<sup>2</sup>, Prague 1, Nové Město, Myslíkova





## Apartment One-bedroom (2+kk)

Rented

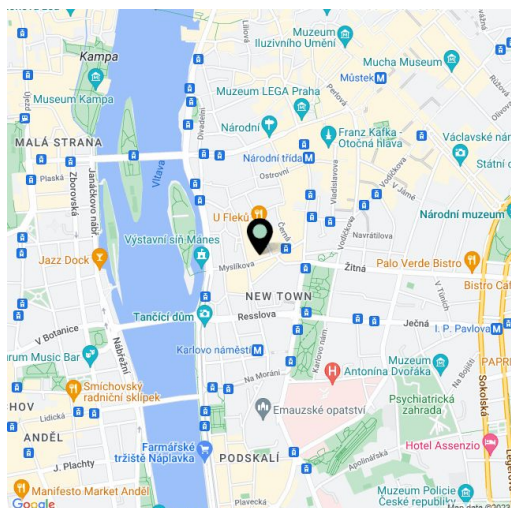
75 m<sup>2</sup>, Prague 1, Nové Město, Myslíkova

Total area	75 m <sup>2</sup>
Parking	-
Cellar	-
Service price	Fixed service charges and water CZK 856/person/month. Gas and electricity will be transferred to the tenant.
PENB	E
Reference number	29863
Available from	Immediately

Refurbished, fully furnished 1-bedroom apartment situated on the 2nd floor of a renovated residential building with an elevator in the center of Prague. A location with full amenities within immediate reach, a few minutes' walk from the Karlovo náměstí metro station and within walking distance of Wenceslas Square.

The interior features a living room with a fully fitted open plan kitchen and dining area, one bedroom with built-in wardrobes and storage, a bathroom equipped with a bathtub, **massage shower cabin**, sink, and toilet, and an entrance hall with a built-in wardrobe.

Quality materials and finishes, **designer furniture**, preserved original details, high ceilings, stucco ornaments, large triple-glazed windows, blackout blinds, **hardwood floors**, tiles, security entry door, gas boiler, washing machine, dishwasher, induction cooktop, microwave oven, coffee-maker.



\* Area of the unit according to the Civil Code. The area consists of the sum total area of the entire unit bounded by perimeter walls.