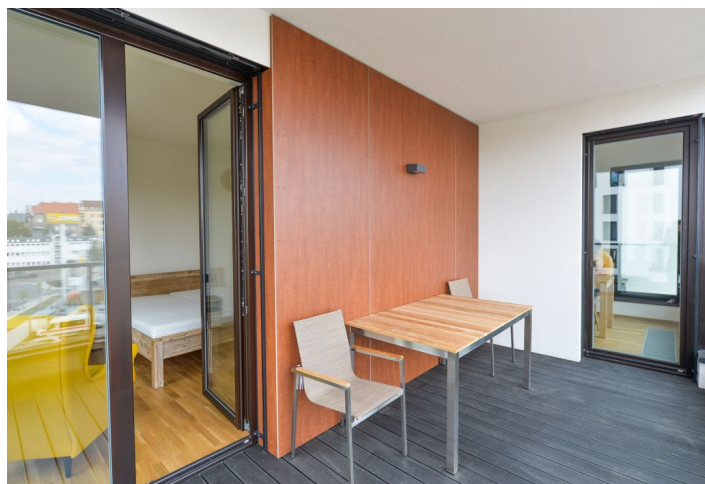




Apartment One-bedroom (2+kk)

Rented

62 m², Praha 7, Holešovice, Sanderova





Apartment One-bedroom (2+kk)

Rented

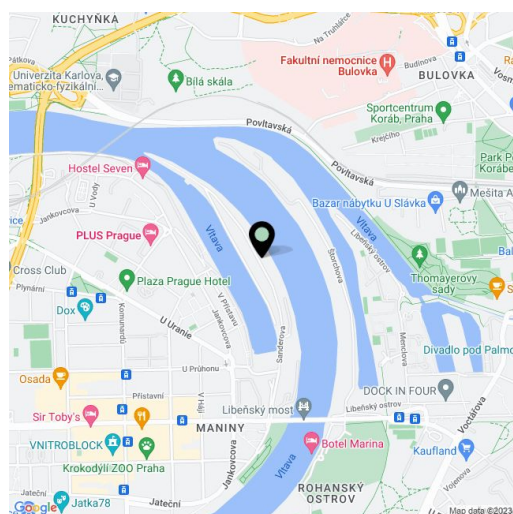
62 m², Praha 7, Holešovice, Sanderova

Total area	73 m ²
Floor area*	62 m ²
Terrace	11 m ²
Parking	Garage parking.
Garage	Yes
Cellar	-
Service price	Service charges, water, and heating approx. CZK 5,400/person/month. Electricity is billed separately.
PENB	B
Reference number	29873
Available from	Immediately

Benefiting from views of the Vltava River and the surrounding greenery, this fully furnished apartment with an 11 sq. m. terrace is situated on the 3rd floor of the Marina Island residential project with a 24/7 reception and security plus underground parking, right on the Vltava riverbank, in a fast-growing Prague 7 area with quick connections to the city center and full amenities within easy reach. Tram connections to the Palmovka, Nádraží Holešovice, and Vltavská metro stations.

The interior includes one bedroom with built-in wardrobes, a living room with a fully fitted open plan kitchen and dining area, a bathroom with a bathtub and toilet, a laundry room, and an entrance hall with built-in wardrobes. The **terrace** is accessible from both main rooms.

Air-conditioning, quality equipment and furnishings, **hardwood floors**, tiles, French windows, security entry door, automatic exterior blinds, washer, dryer, dishwasher, TV, video entry phone, garden furniture, **cellar**, elevator. One **garage parking** space included. Project amenities also include a private garden, guest parking, barbecue point, bike rental, and a bike path leading to Trója neighborhood. Available from April 15th, 2023.



* Area of the unit according to the Civil Code. The area consists of the sum total area of the entire unit bounded by perimeter walls.