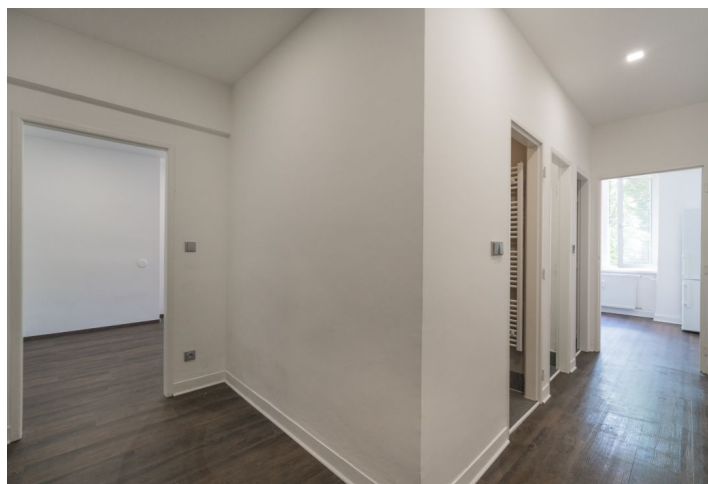




## Apartment Studio (1+1)

50 m<sup>2</sup>, Brno, Brno - Královo Pole, Botanická

Ask for price





## Apartment Studio (1+1)

[Ask for price](#)

50 m², Brno, Brno - Královo Pole, Botanická

Total area	50 m²
Parking	Garage parking nearby.
Garage	Yes
Cellar	Yes
PENB	C
Reference number	29913

This east-facing apartment after a complete reconstruction is housed in a renovated building with a private garden in the courtyard. The building is located on a quiet tree-lined street with good transport accessibility and an abundance of urban amenities and is close to several orchards, a botanical garden and Lužánky Park.

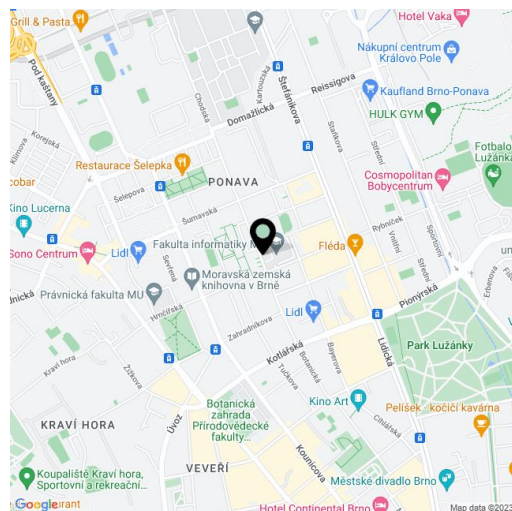
The layout of the apartment on the 1st floor consists of a separate kitchen, one room, a large entrance hall, bathroom, separate toilet and utility room with preparation for washing machine.

The apartment includes a fully fitted kitchen with Bosch appliances (ceramic hob, oven, dishwasher and separated fridge), plastic windows with internal blinds, German vinyl floor, satellite TV and new switches and lights, including LED lighting in the room. In the refurbished building with a new facade, there is a storage room for bikes and a large cellar. Residents can enjoy seating under the trees in the courtyard garden. There is a possibility to rent a garage parking spot in the next door building.

This sought after location boasts plenty of greenery and perfect transport accessibility. The trip by trolleybus to the city center takes only a few minutes, there is a stop almost in front of the building. Within walking distance, there is a business center, post office, café, pharmacy, several restaurants and many other services.

The price includes commission. Possible to arrange renting the apartment.

Interior 50 m².



\* Area of the unit according to the Civil Code. The area consists of the sum total area of the entire unit bounded by perimeter walls.



## Apartment Studio (1+1)

Ask for price

50 m<sup>2</sup>, Brno, Brno - Královo Pole, Botanická

