



Warehouse space

1 422 m², Prague 9, Horní Počernice, Sezemická

Ask for price





Warehouse space

1 422 m², Prague 9, Horní Počernice, Sezemická

[Ask for price](#)

Total area	1 422 m ²
Ceiling height	10 m
Floor loading capacity	5 t/m ²
Column grid structure	—
Structure	Reinforced concrete structure
PENB	C
Reference number	29948

1,216 sq.m. of brand new warehouse and **206 sq.m** of office premises for lease in a logistic park situated on the northeast edge of Prague. The project consists of 28 warehouse buildings; construction of this park commenced 2006. **Available upon agreement within 2 months.**

Location:

The logistic park is situated 20 minutes from Prague's city center, exit 3 on D10 highway (Prague – Mladá Boleslav – Germany and Poland). The park is reachable by a shuttle bus – connection to Černý Most (line B) metro station, the Horní Počernice train station is 1 km from the park.

Features and Services:

- 24/7 manned security in the area
- Park maintenance

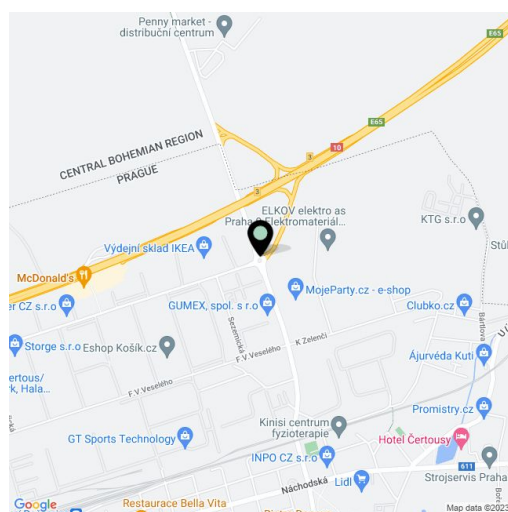
Warehouse/Industrial premises:

- units 1 216 sq.m.
- 2 loading dock per unit (one direct entry)
- Floor loading capacity 5 t/sq.m
- Clear height 10 m
- Truck yard 35-45 m
- Column grid structure 24x12 m
- Infa-heating or heating blowers
- Sprinkler system

Office:

- unif of 206 sq.m.
- Air-conditioned

Rental and service charges listed without VAT. Lessee pays no commission.

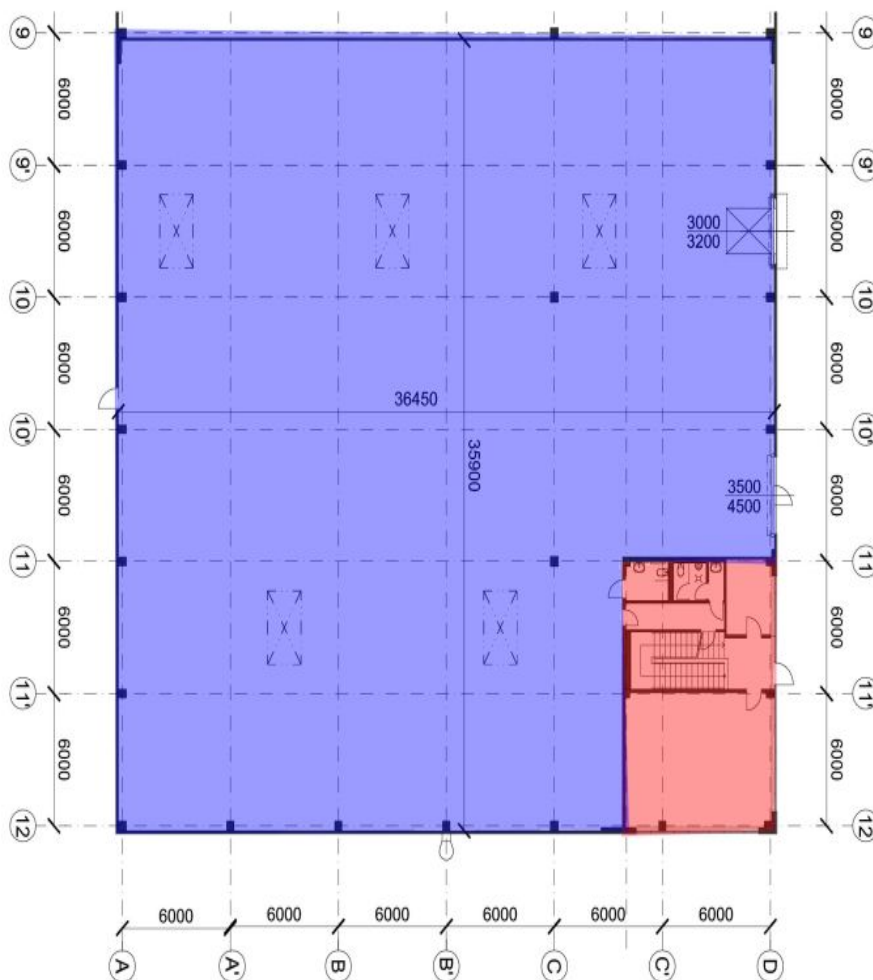




Warehouse space

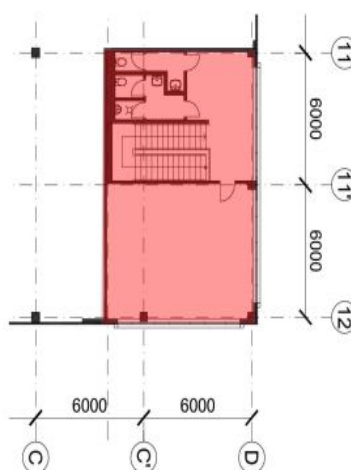
1 422 m², Prague 9, Horní Počernice, Sezemická

Ask for price



GROUND FLOOR

WH
1,216 sqm
OFF
206 sqm



1st FLOOR



Warehouse space

1 422 m², Prague 9, Horní Počernice, Sezemická

Ask for price

