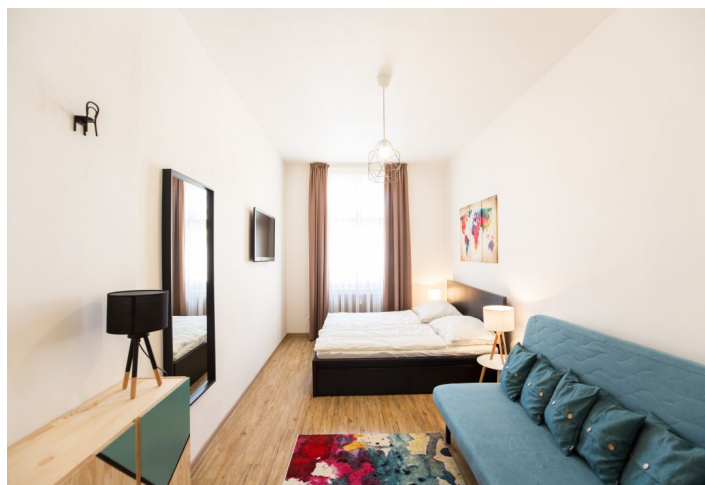




Apartment Two-bedroom (3+kk)

Rented

103 m², Prague 2, Vinohrady, Londýnská





Apartment Two-bedroom (3+kk)

Rented

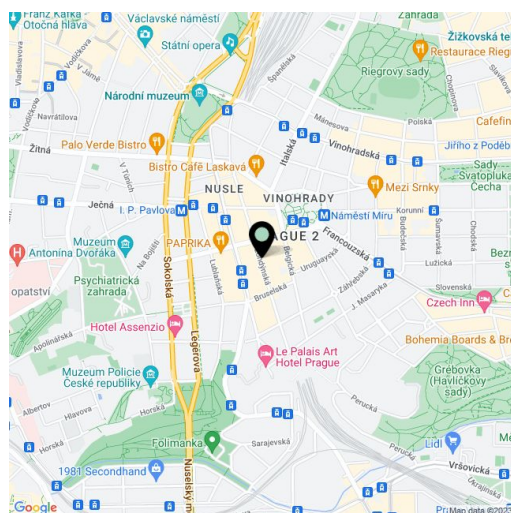
103 m², Prague 2, Vinohrady, Londýnská

Total area	103 m ²
Parking	-
Cellar	Yes
Service price	Common building charges CZK 3,100/month. Electricity will be transferred to the tenant.
PENB	G
Reference number	29984
Available from	Immediately

This completely refurbished and furnished 2-bedroom apartment is situated on the fourth floor of a fully renovated building with an elevator, on a lovely tree-lined street in the highly sought-after residential neighborhood of Vinohrady. Beautifully located just moments from Náměstí Míru and I.P. Pavlova Squares with metro stations and tram links, within walking distance of Havlíčkovy Sady Park. Quick access to the city center, full amenities in close vicinity.

The apartment features a sunny living room with a dining area and a fully fitted open-plan kitchen, two separate bedrooms facing the courtyard, a bathroom (bathtub, walk-in shower, sink), a separate toilet, and a large entrance hall.

Preserved original details, high ceilings, large windows, **hardwood parquet floors**, vinyl floors, tiles, built-in storage, central heating, washer, dishwasher, induction cooktop, microwave oven, American type fridge, kitchenware, TV, alarm, **cellar**.



* Area of the unit according to the Civil Code. The area consists of the sum total area of the entire unit bounded by perimeter walls.



Apartment Two-bedroom (3+kk)

Rented

103 m², Prague 2, Vinohrady, Londýnská

