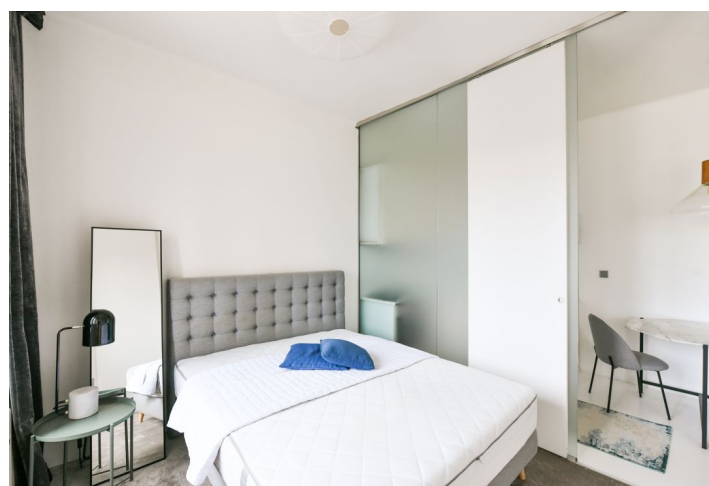




Apartment One-bedroom (2+kk)

Rented

52 m², Prague 7, Holešovice, Jankovcova





Apartment One-bedroom (2+kk)

Rented

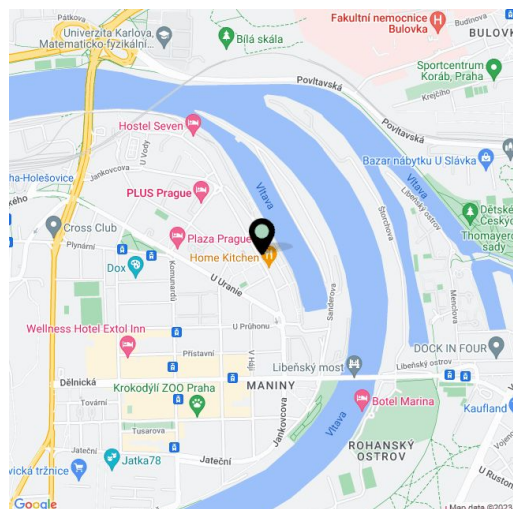
52 m², Prague 7, Holešovice, Jankovcova

Total area	54 m²
Floor area*	52 m²
Balcony	2 m²
Parking	-
Cellar	-
Service price	Deposit for service charges, water, and heating CZK 4,200 per month. Electricity and gas - transferred to the tenant.
PENB	G
Reference number	30002
Available from	Immediately

Bright and completely renovated furnished 1-bedroom apartment with a balcony and preserved original features, situated on the 3rd floor of a Functionalist residential building with an elevator, just moments from the Vltava riverbank. Located in a quickly developing part of Holešovice steps from the Lighthouse Tower administrative center and a tram stop, with quick access to the Palmovka and Vltavská metro stations and the city center. Full amenities in the area including schools, shops, a pharmacy, medical facility, quality restaurants, bistros, and cafes.

The atypical interior features a living room with dining area and a fully fitted open plan kitchen, one bedroom separated by a sliding door and access to the **balcony**, a bathroom with a walk-in shower, a separate toilet, a fitted **walk-through closet**, and an entrance hall with built-in wardrobes and storage.

High ceilings, large windows, **hardwood parquet floors, screed floors**, carpet, security entry door, **Brokis light fixtures**, custom-made **marble table**, high quality bathroom fixtures, blinds, washer, dishwasher.



* Size of the unit according to the Housing Act.

The area consists of the sum total of the internal area of every room.