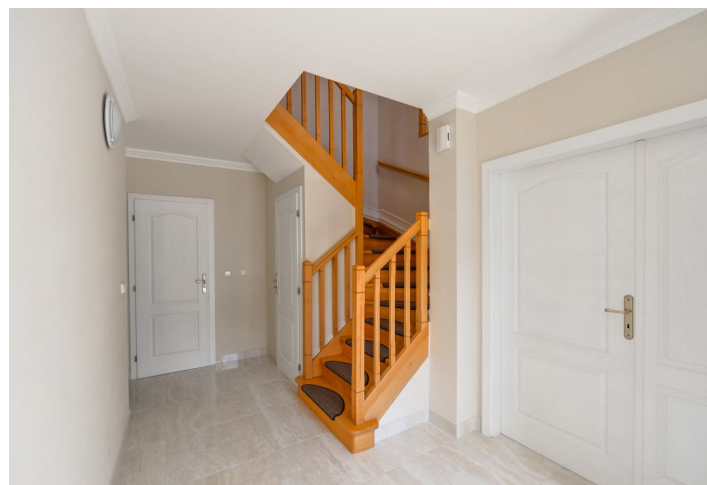




House Four-bedroom (5+1)

Rented

197 m², Prague 6, Nebušice, Na Malé Šárce





House Four-bedroom (5+1)

Rented197 m², Prague 6, Nebušice, Na Malé Šárce

| | |
|------------------|--------------------|
| Plot | 537 m ² |
| Foot print | 163 m ² |
| Garden | 374 m ² |
| Parking | Double garage. |
| Garage | Yes |
| Cellar | - |
| PENB | G |
| Reference number | 30003 |
| Available from | Immediately |

This comfortable 4-bedroom 2-bathroom free standing home with a garden is a part of an American style subdivision built around the International School of Prague. Located in the beautiful surroundings of Nebušice, Prague 6, directly adjacent to the lovely natural park in Šárecké Valley. Peaceful green location suitable for families with children, with excellent access to the airport and the city center - regular bus links to Bořislavka metro station.

The upper floor includes 4 bedrooms, en-suite bathroom plus a family bathroom, a spacious gallery, and a separate toilet. The ground floor features a living room and a separate dining room, both with access to the terrace and garden, a fully fitted kitchen plus an adjacent laundry room with access to the garden and the garage, boiler room, storage room, an additional separate toilet, and entrance hall.

Wooden and laminated floors, tiles, built-in wardrobes and storage, gas heating, external blinds, washing machine, dishwasher, alarm, UPC cabling. Double garage. The community has 24/7 private security, satellite reception, and private road maintenance. Utilities CZK 12,000/month.

