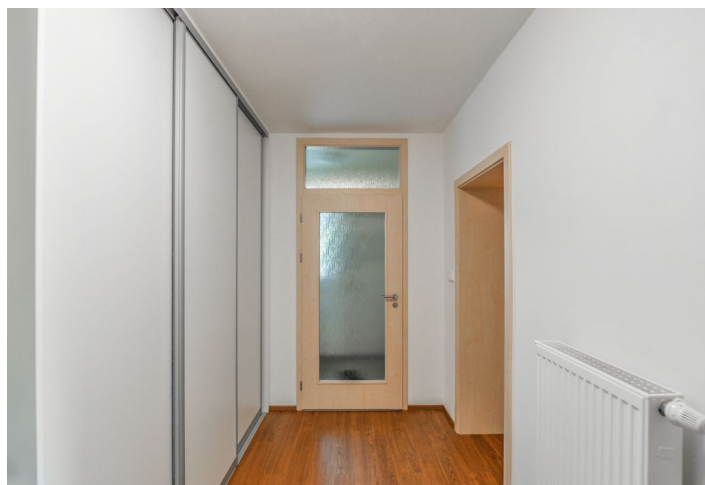




Apartment Two-bedroom (3+kk)

Rented

75 m², Praha 5, Stodůlky, Na Vlku





Apartment Two-bedroom (3+kk)

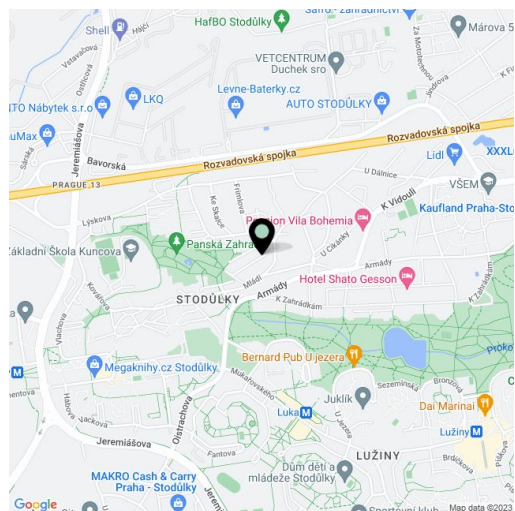
Rented75 m², Praha 5, Stodůlky, Na Vlku

Total area	75 m ²
Parking	Alloted parking space.
Cellar	Yes
PENB	G
Reference number	30007
Available from	Immediately

This is a newly fully renovated 2-bedroom flat on the ground floor of a free standing house with a garden, in a residential neighborhood of Stodůlky, Prague 5. Located in close vicinity of Panská zahrada Park and several children's playgrounds, with easy access to the Prague City Ring Road. Quiet green neighbourhood close to the Prokopské Valley natural preserve, within walking distance of the highly popular Mládi Elementary School. Closest metro stations Luka and Stodůlky, convenient to the German and Japanese international schools. Tennis hall and minigolf nearby.

The flat includes a living room with dining area and a fully fitted open kitchen, two bedrooms with built-in wardrobes, shower room, a separate toilet, hall and entrance hall with built-in wardrobes.

Vinyl floors, tiles, gas boiler, blinds, dishwasher, **23 m² cellar**. One **allocated parking** space included. Utilities CZK 2500 - 3000 per month. Available from September 15th, 2018.



* Area of the unit according to the Civil Code. The area consists of the sum total area of the entire unit bounded by perimeter walls.



Apartment Two-bedroom (3+kk)

75 m², Praha 5, Stodůlky, Na Vlku

Rented

