



Apartment One-bedroom (2+1)

Rented

76 m², Prague 4, Podolí, Podolská





Apartment One-bedroom (2+1)

Rented

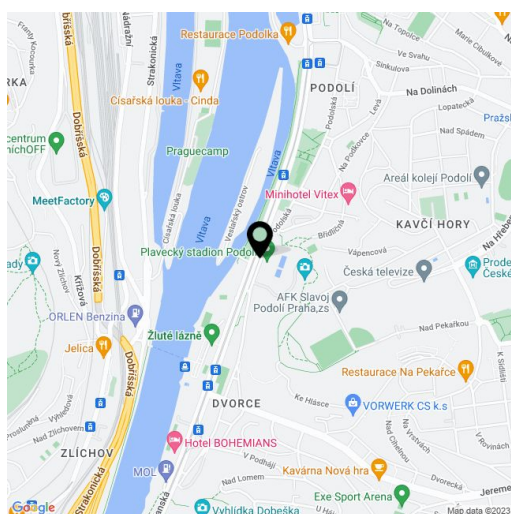
76 m², Prague 4, Podolí, Podolská

Total area	76 m ²
Parking	-
Cellar	Yes
PENB	G
Reference number	30026
Available from	Immediately

Located just steps from the Vltava riverbank, this is a newly refurbished one bedroom flat green views. Situated on the fourth floor of a well kept residential building with a green courtyard with a children's playground. Tram and bus stops a few steps away, full amenities and numerous sports facilities in close vicinity, incl. Podolí and Žluté lázně swimming pools and a popular bike trail.

The interior features a living room, a fully fitted eat-in kitchen, one bedroom, walk-in closet/study room, bathroom with bathtub, a separate toilet, and entrance hall with built-in storage.

High ceilings, large windows, vinyl floors, tiles, security entry door, blinds, dishwasher, microwave oven, **cellar**, pram and bike storage room in the building. Service charges, heating and water CZK 2600 per month. Electricity will be transferred to the tenant.



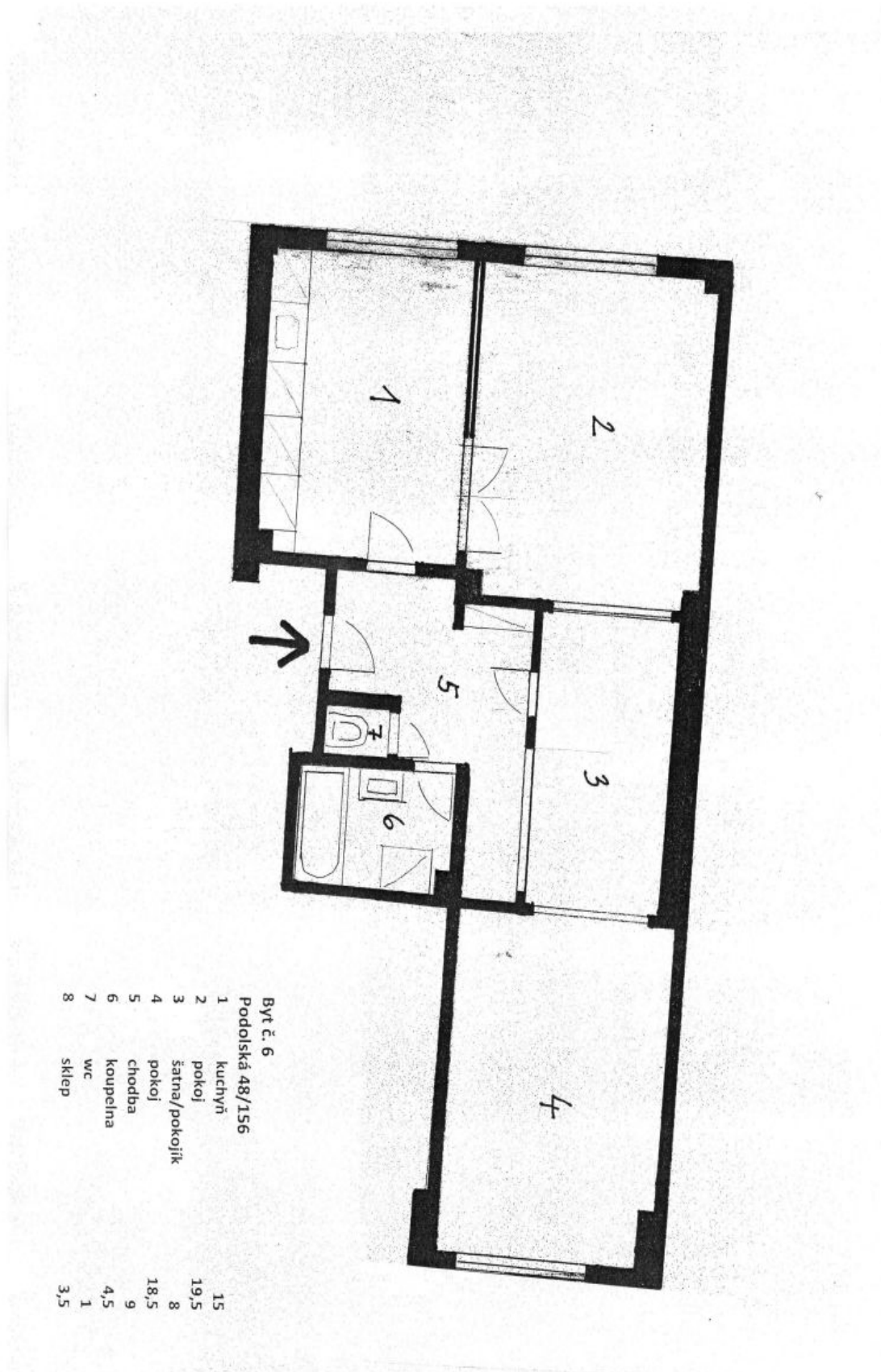
* Area of the unit according to the Civil Code. The area consists of the sum total area of the entire unit bounded by perimeter walls.



Apartment One-bedroom (2+1)

Rented

76 m², Prague 4, Podolí, Podolská



Byt č. 6
Podolská 48/156

1	kuchyně	15
2	pokoj	19,5
3	šatna/pokojk	8
4	pokojk	18,5
5	chodba	9
6	koupelna	4,5
7	wc	1
8	sklep	3,5