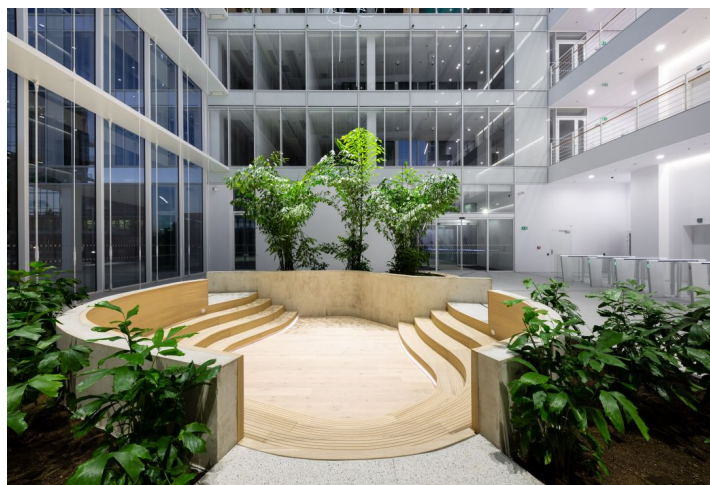
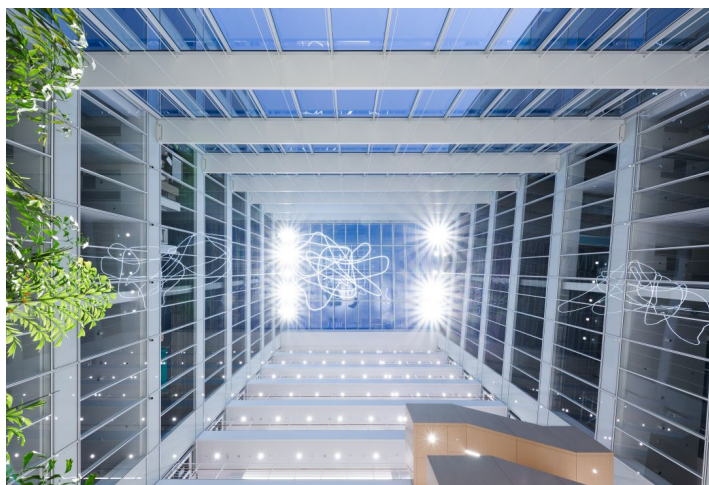
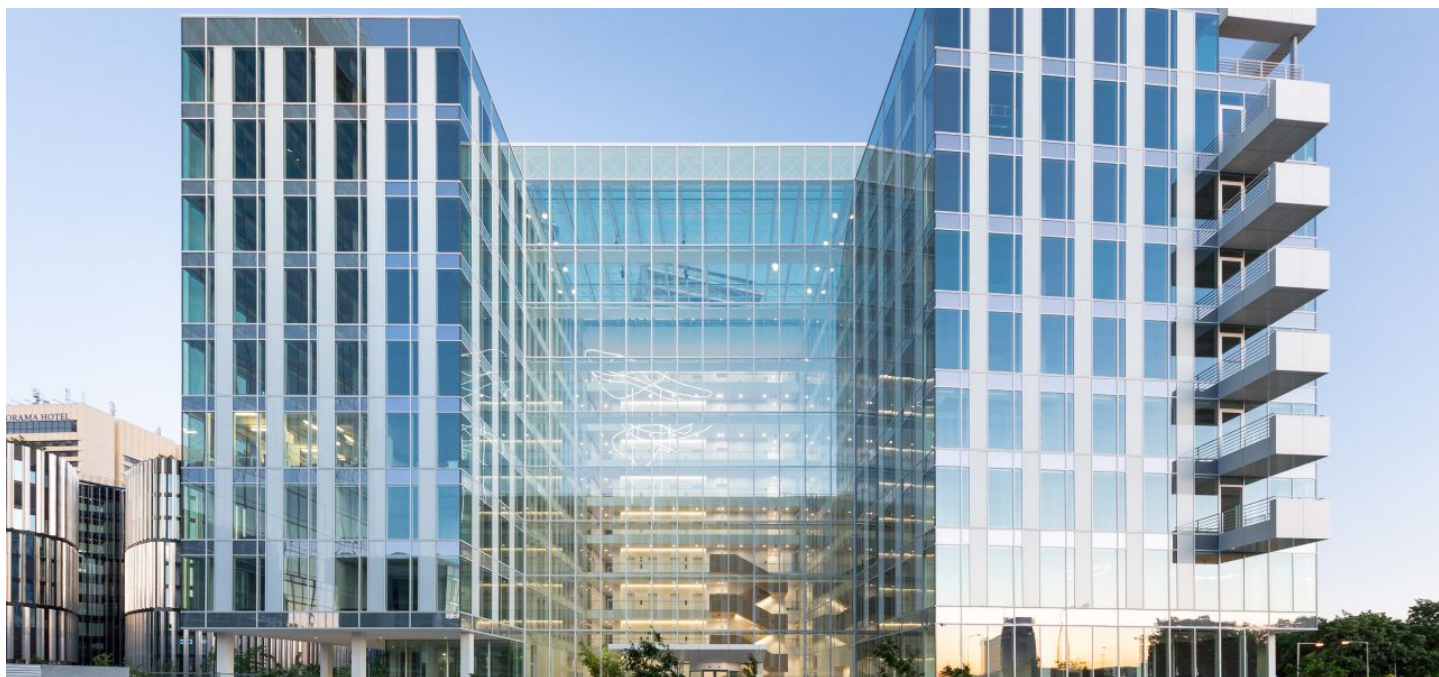


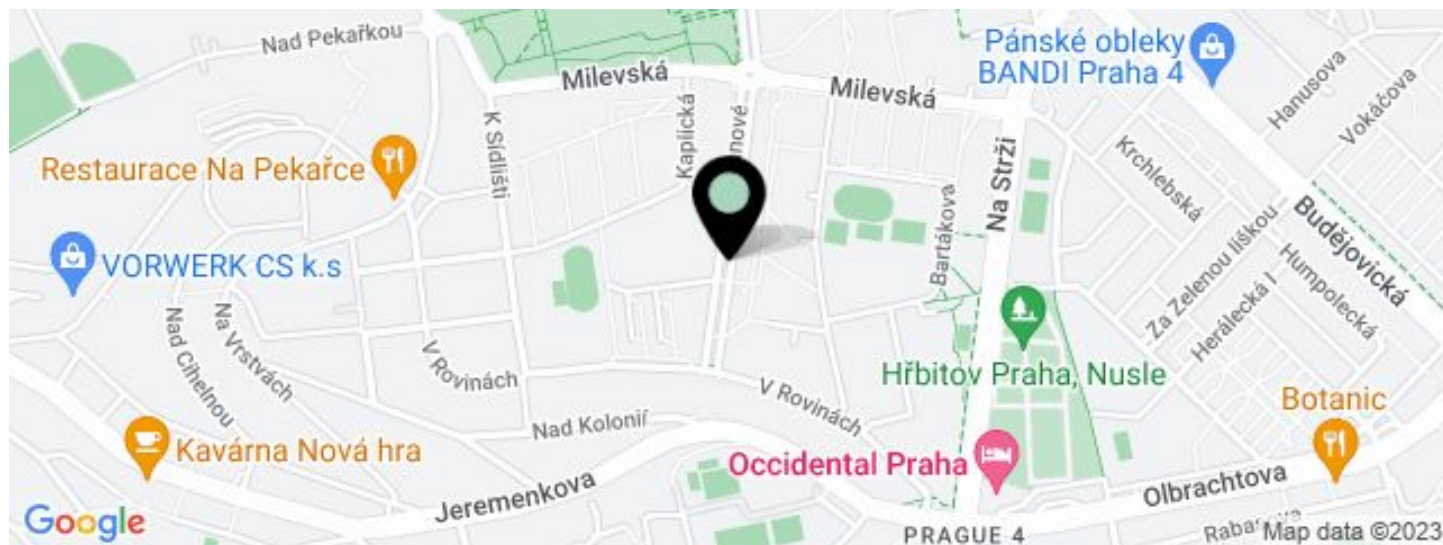


Office building

560 m², Prague 4, Nusle, Pujmanové

€ 18.50 / m² | CZK 464 / m²



**Office building****€ 18.50 / m² | CZK 464 / m²**560 m², Prague 4, Nusle, Pujmanové

UNIT	AVAILABLE AREA	SERVICES	PARKING	MONTHLY RENT
Office space, 6th floor	560 m ²	175 CZK monthly per m ²	EUR 140 / ps / month	€ 18.50 / m ²

**Office building**560 m², Prague 4, Nusle, Pujmanové**€ 18.50 / m² | CZK 464 / m²**

Service price	175 CZK monthly per m ²
Total building area	15 000 m ²
Tenant consumption	—
Parking	140 EUR
Parking service charges	—
Parking ratio	1:90
Certification	—
PENB	Not required
Reference number	30046

Modern office space for lease in a building with a rooftop terrace, balconies, and spacious & bright rooms, designed by the world-renowned American architectural studio Richard Meier & Partners and CUBOID Architects.

This administrative center offers not only the use of all services via a mobile application (e.g. ordering lunch, booking an electric bike or electric car, etc.), but also a number of innovative elements that contribute to creating a healthy working environment. There is also a bike room with showers and an all-day restaurant. In addition, the building has an advanced ventilation and air conditioning system, cooling beams, LED lighting, and a range of other energy-saving solutions to minimize its environmental footprint and operating costs.

Location:

Easy access by car and public transport, direct connection to the Prague Ring Road and D1 highway – within walking distance of the Pankrác (line C) metro station and Sídlíště Pankrác bus and tram stop.

Features and Services:

- LEED Platinum and WELL Gold certification
- Accessible rooftop terrace
- Use of services via mobile application
- Use of environmentally friendly materials
- LED lighting
- Advanced ventilation and air conditioning system
- Cooling beams
- Central reception
- 24/7 security
- Magnetic card access
- Lowered ceilings
- Raised floors
- Storage space, showers, changing rooms
- Restaurant in the building
- Underground parking with intelligent parking system

Rental and service charges are listed without VAT. Lessee pays no commission.



Office building

€ 18.50 / m² | CZK 464 / m²

560 m², Prague 4, Nusle, Pujmanové

