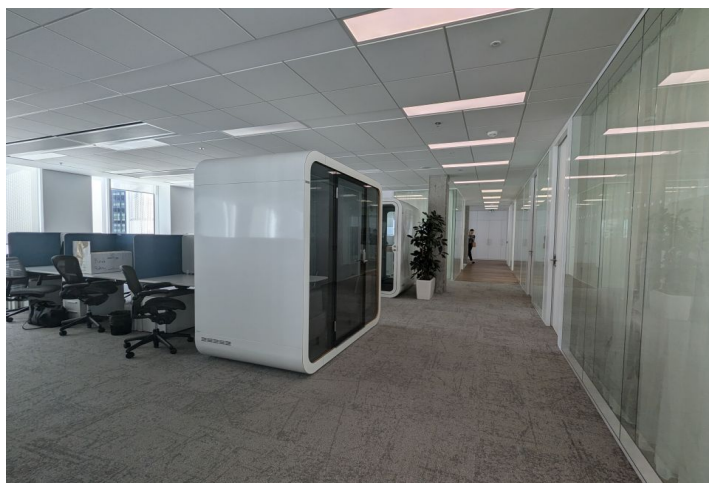




Office space

Prague 4, Nusle, Pujmanové

€ 18.50 / m² | CZK 465 / m²



**Office space**

Prague 4, Nusle, Pujmanové

€ 18.50 / m² | CZK 465 / m²

Service price	175 CZK monthly per m ²
Available area	560 m ²
Cellar	-
Parking	EUR 140 / ps / month
PENB	B
Reference number	30098

Modern office space for lease on the 5th floor in a building with a rooftop terrace, balconies, and spacious & bright rooms, designed by the world-renowned American architectural studio Richard Meier & Partners and CUBOID Architects.

This administrative center offers not only the use of all services via a mobile application (e.g. ordering lunch, booking an electric bike or electric car, etc.), but also a number of innovative elements that contribute to creating a healthy working environment. There is also a bike room with showers and an all-day restaurant. In addition, the building has an advanced ventilation and air conditioning system, cooling beams, LED lighting, and a range of other energy-saving solutions to minimize its environmental footprint and operating costs.

Location:

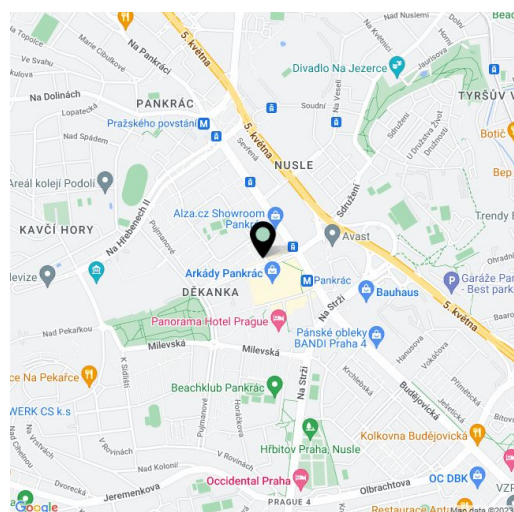
Easy access by car and public transport, direct connection to the Prague Ring Road and D1 highway – within walking distance of the Pankrác (line C) metro station and Sídlíště Pankrác bus and tram stop.

Features and services:

- LEED Platinum and WELL Gold certification
- Accessible rooftop terrace
- Use of services via mobile application
- Use of environmentally friendly materials
- LED lighting
- Advanced ventilation and air conditioning system
- Cooling beams
- Central reception
- 24/7 security
- Magnetic card access
- Lowered ceilings
- Raised floors
- Storage space, showers, changing rooms
- Restaurant in the building
- Underground parking with intelligent parking system

Available from 09/2025.

Rental and service charges are listed without VAT. Lessee pays no commission.

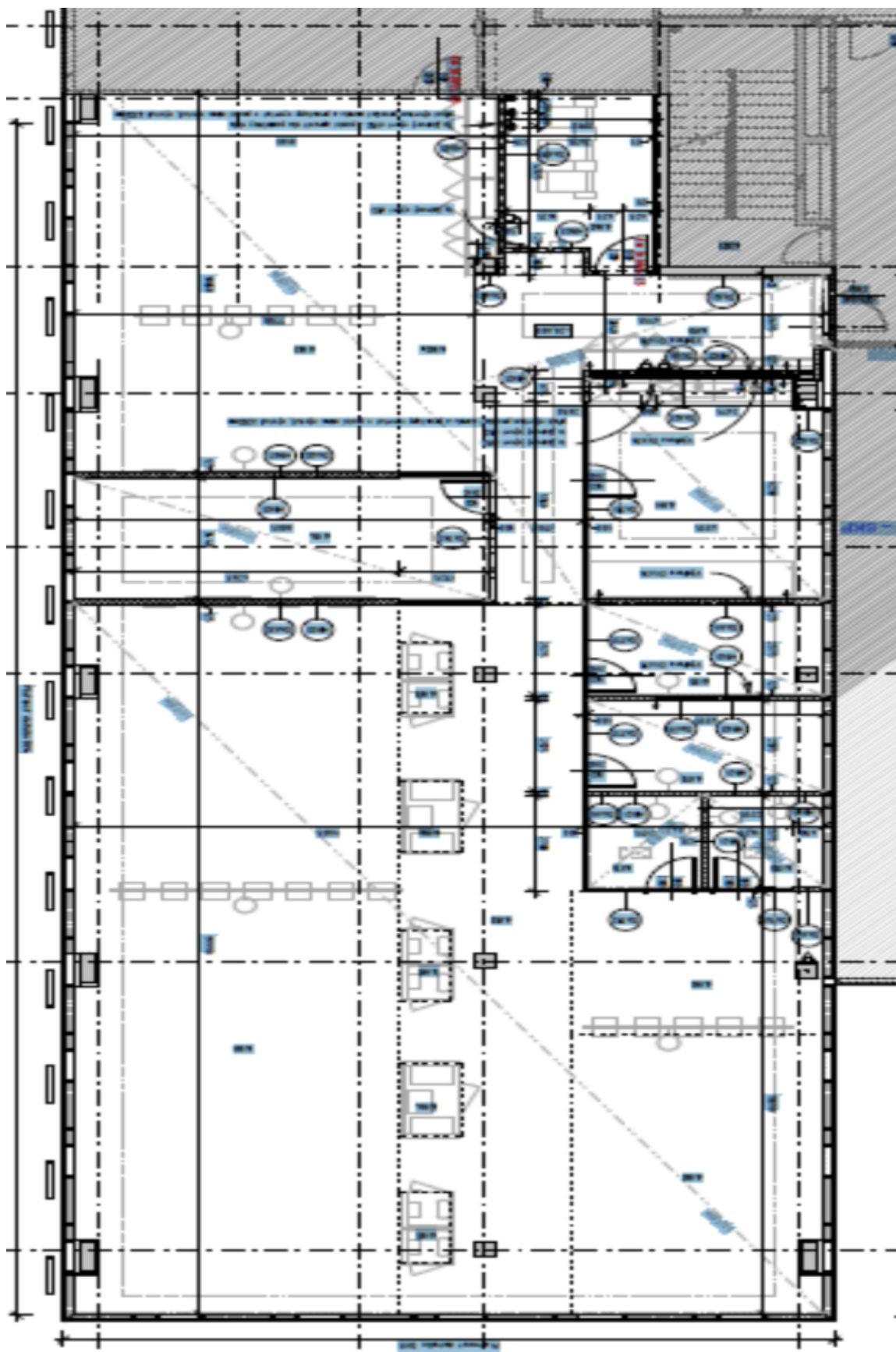




Office space

€ 18.50 / m² | CZK 465 / m²

Prague 4, Nusle, Pujmanové





6NP

