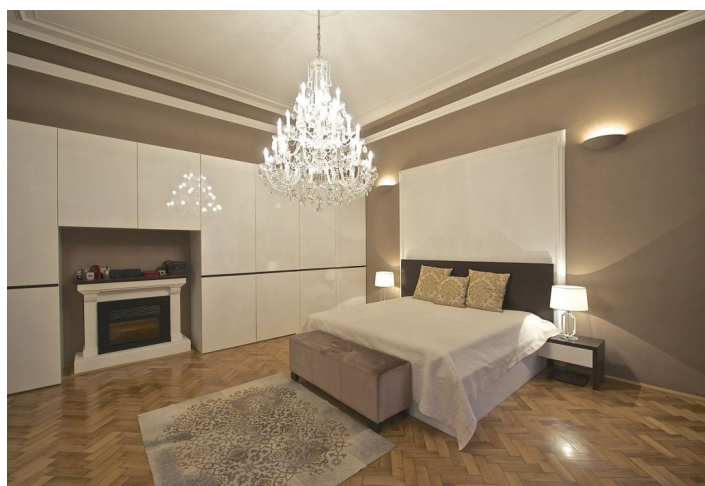




Apartment One-bedroom (2+1)

Rented

85 m², Prague 1, Josefov, Pařížská





Apartment One-bedroom (2+1)

Rented

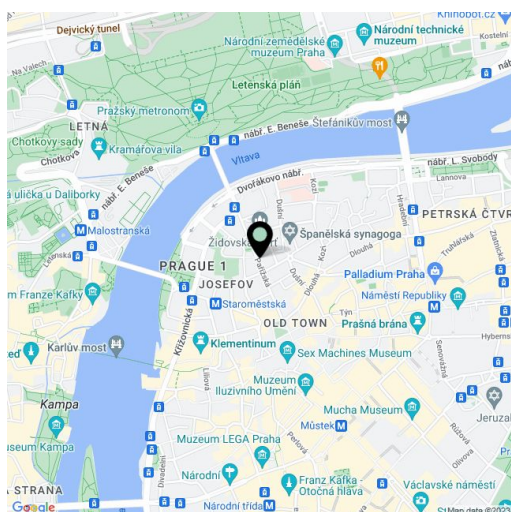
85 m², Prague 1, Josefov, Pařížská

Total area	85 m ²
Parking	-
Cellar	-
PENB	G
Reference number	30186
Available from	Immediately

Elegant, completely furnished flat with the most prestigious address in Prague, Pařížská Street. The apartment is located on the 1st floor of a completely reconstructed traditional building in the center of Prague.

The apartment offers a spacious living room with a fully equipped kitchen and a dining area, a bedroom, a bathroom, and a toilet.

Other features include parquet floors and tiles, crystal chandeliers, security entry door, washer, dishwasher, coffee maker, safe. The surrounding area offers full public amenities and all the comforts of the city center, including the best restaurants, shops, and cafes within walking distance. Common building charges CZK 3,500/month. Electricity and gas will be transferred to the tenant's name. Possible to rent as unfurnished.



* Area of the unit according to the Civil Code. The area consists of the sum total area of the entire unit bounded by perimeter walls.



Apartment One-bedroom (2+1)

Rented

85 m², Prague 1, Josefov, Pařížská

