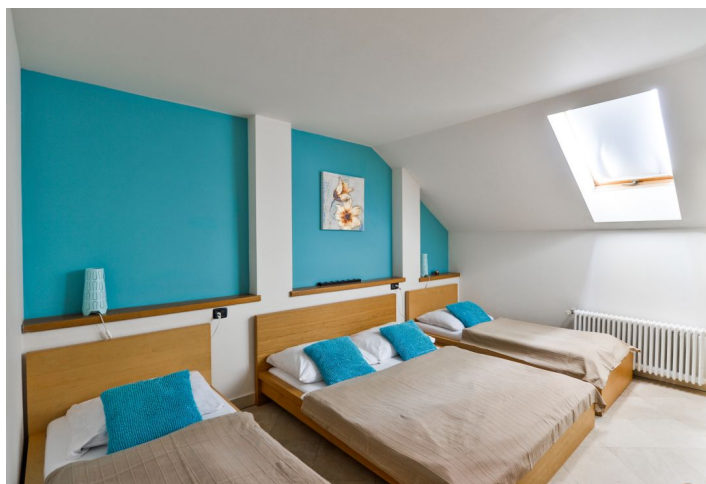




Apartment One-bedroom (2+kk)

Rented

38 m², Praha 2, Nové Město, Legerova





Apartment One-bedroom (2+kk)

Rented

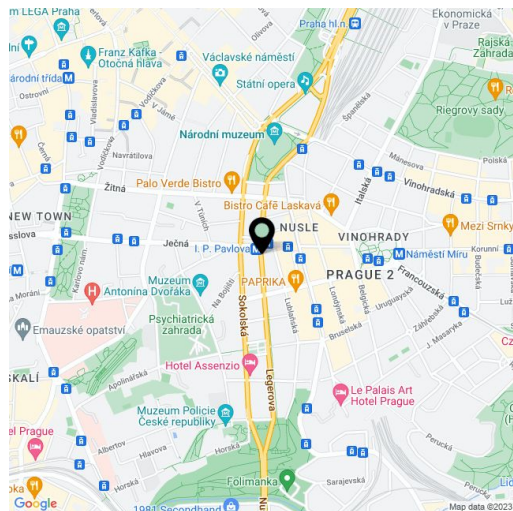
38 m², Praha 2, Nové Město, Legerova

Total area	46 m ²
Floor area*	38 m ²
Terrace	8 m ²
Parking	-
Cellar	-
PENB	G
Reference number	30344
Available from	Immediately

Benefiting from a terrace facing the garden, this is a fully furnished 1-bedroom attic apartment on the fifth floor of a renovated residential building with a lift and a courtyard garden with seating. Located on a busy street just moments from I.P.Pavlova metro station, with full amenities within easy reach. Within walking distance of the city center.

The interior features a living room with a fully fitted open kitchen, one bedroom, bathroom with a walk-in shower, bidet and toilet, and entrance hall.

Tiles throughout, French windows, security entry door, sofa bed, central heating, washing machine, microwave oven, garden furniture, TV, WiFi. Cleaning and breakfast can be arranged at an additional fee. Service charges and utilities CZK 4000 per month. Long term rental. Mid term rental (3 to 9 months) available upon agreement.



* Area of the unit according to the Civil Code. The area consists of the sum total area of the entire unit bounded by perimeter walls.