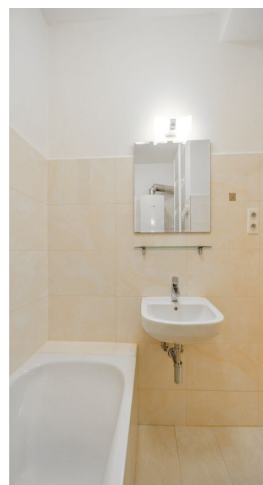
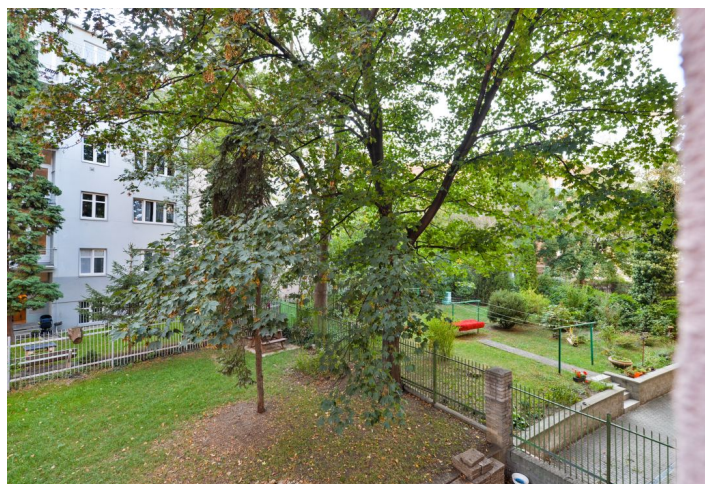
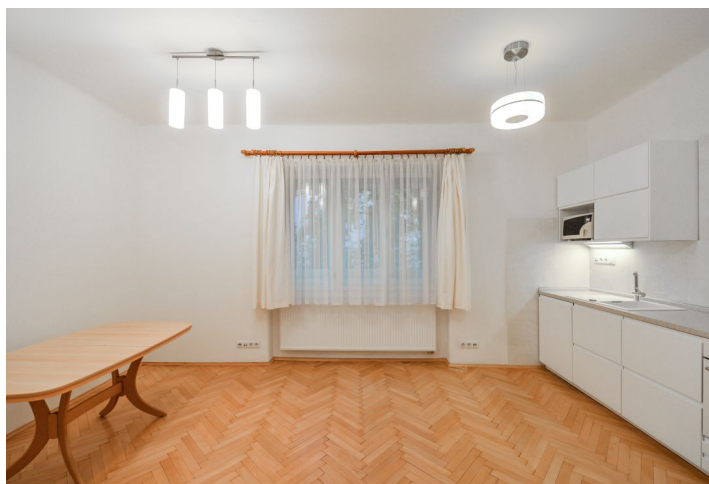




## Apartment One-bedroom (2+kk)

Rented

55 m<sup>2</sup>, Prague 4, Nusle, Na Jezerce





## Apartment One-bedroom (2+kk)

Rented

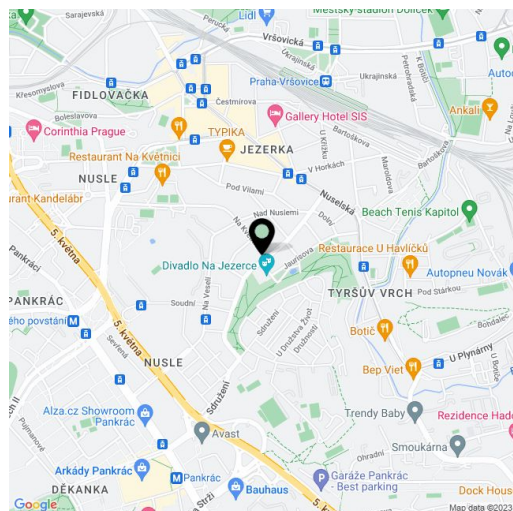
55 m<sup>2</sup>, Prague 4, Nusle, Na Jezerce

Total area	55 m <sup>2</sup>
Parking	-
Cellar	-
PENB	F
Reference number	30392
Available from	Immediately

Completely newly renovated 1-bedroom flat on the first floor of a well maintained residential building with a secure courtyard garden. Located in Nusle, Prague 4, in the immediate vicinity of the Jezerka Park. Area with full amenities within easy reach and very good transportation connections (trams, buses), a ten minute walk to Pankrác and Pražského povstání metro stations and Arkády Pankrác shopping mall.

The interior features a living room with dining area and a fully fitted open kitchen, one bedroom, bathroom with bathtub, a separate toilet, storage room, and entrance hall. The windows of the apartment are facing the quiet courtyard.

Green views, preserved original details, high ceilings, large windows, **solid wood parquet floors**, carpet in the bedroom, PVC in the hall, wardrobes, gas heating, dishwasher, microwave oven, video entry phone, shared balcony on the mezzanine floor, chip entry to the building, **secure gated green courtyard with seating**. No lift. Common building charges CZK 1000/month for two persons. Gas and electricity will be transferred to the tenant's name.



\* Area of the unit according to the Civil Code. The area consists of the sum total area of the entire unit bounded by perimeter walls.