



Apartment Three-bedroom (4+kk)

Rented

146 m², Prague 6, Bubeneč, Národní obrany





Apartment Three-bedroom (4+kk)

Rented

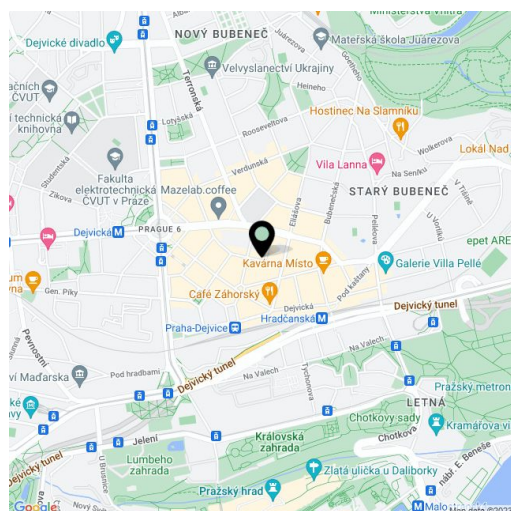
146 m², Prague 6, Bubeneč, Národní obrany

Total area	167 m ²
Floor area*	146 m ²
Terrace	21 m ²
Parking	-
Cellar	Yes
Service price	Common building charges and utilities ca. CZK 2,300/month. Electricity and gas will be transferred to the tenant.
PENB	G
Reference number	30460
Available from	Immediately

This bright, quiet, fully furnished 3-bedroom split-level attic apartment with designer furnishings and a spacious terrace is on the fifth top floor of a residential building with an elevator, offering views of Prague Castle and Petřín Hill. Moments from the Hradčanská metro station, bus and tram links. Within easy reach of Stromovka Park, convenient to the airport and the international schools ISP, Park Lane, and Riverside.

The lower level includes a spacious living room with a dining area and fully fitted kitchen, and a separate toilet. The upper floor features 3 bedrooms (one with a walk-in closet, fireplace, and designer library), and a bathroom with a bathtub, shower, toilet, and underfloor heating. The spacious terrace is accessible from two of the bedrooms.

Hardwood floors, tiles, built-in air-conditioning, electrical blinds, built-in wardrobes, heating convectors under windows, washing machine, dishwasher, microwave oven, O2 internet, cellar.



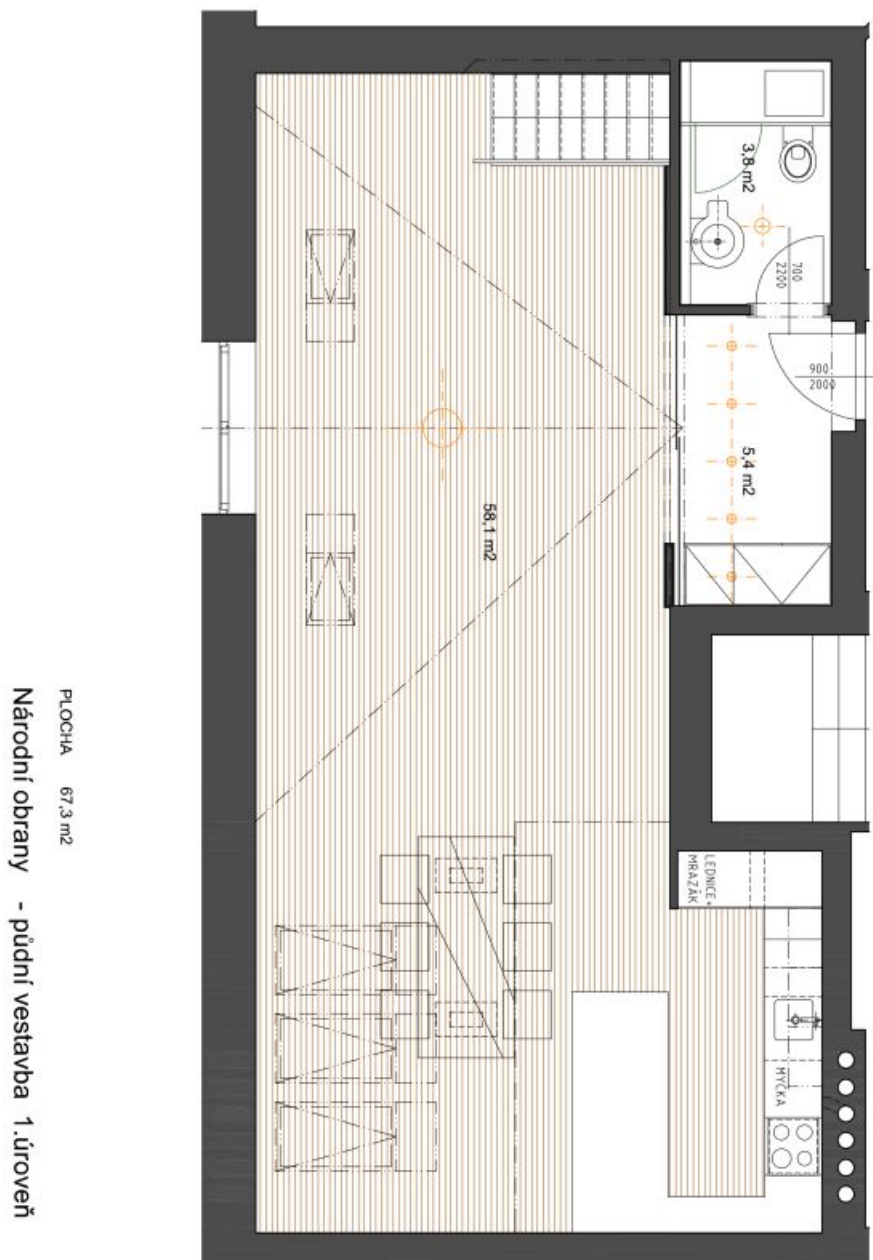
* Area of the unit according to the Civil Code. The area consists of the sum total area of the entire unit bounded by perimeter walls.



Apartment Three-bedroom (4+kk)

146 m², Prague 6, Bubeneč, Národní obrany

Rented





Apartment Three-bedroom (4+kk)

Rented

146 m², Prague 6, Bubeneč, Národní obrany

