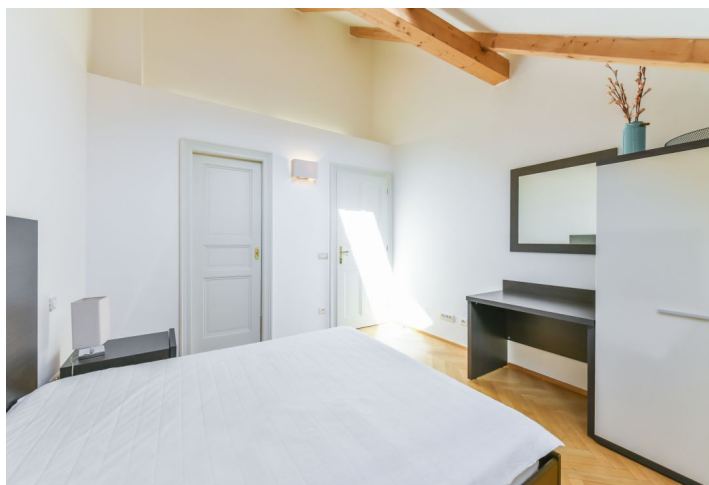




Apartment One-bedroom (2+kk)

Sold

52 m², Prague 2, Nové Město, Háčkova





Apartment One-bedroom (2+kk)

Sold52 m², Prague 2, Nové Město, Háfkova

Total area	52 m ²
Parking	-
Cellar	-
PENB	G
Reference number	30521

This attic apartment with 2 bathrooms is located on the 5th floor of a completely renovated apartment building with an elevator. The house is set on a side street on the border of New Town and Vinohrady, within walking distance of the center and close to public transport stops.

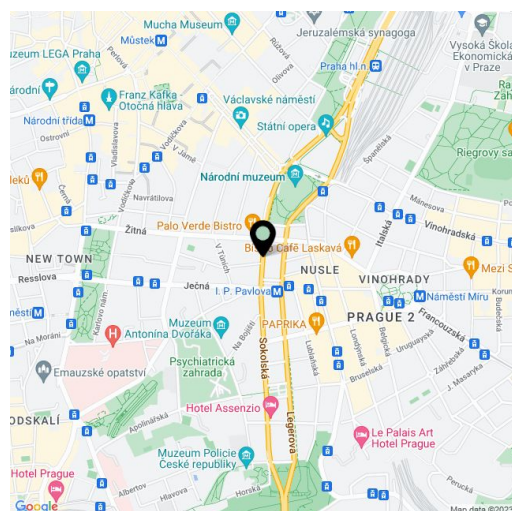
The layout consists of a living room with a kitchen, 1 bedroom, and 2 bathrooms (shower, sink, bidet, toilet/bathtub, sink, bidet, toilet).

Features include **parquet flooring** (tiles in the bathrooms), exposed beams, remote-controlled skylights with blinds, a security entrance door with electronic access, and a kitchen with basic appliances. Residents can use the lounge and fitness center in the basement of the house.

Close to the center of Prague, in close proximity of **Wenceslas Square** and **Charles Square**. A tram stop and I. P. Pavlova square with a metro station (C line) are several steps away, the Museum metro transfer station (A and C lines) can be reached on foot in a few minutes. There are many restaurants, cafes, small shops, theaters, cinemas, as well as a medical clinic and a pharmacy in the neighborhood. The nearby **Catherine's Garden** provides greenery and space for relaxation.

Interior 51.9 m².

In addition to regular property viewings, we also offer **real time video viewings** via WhatsApp, FaceTime, Messenger, Skype, and other apps.



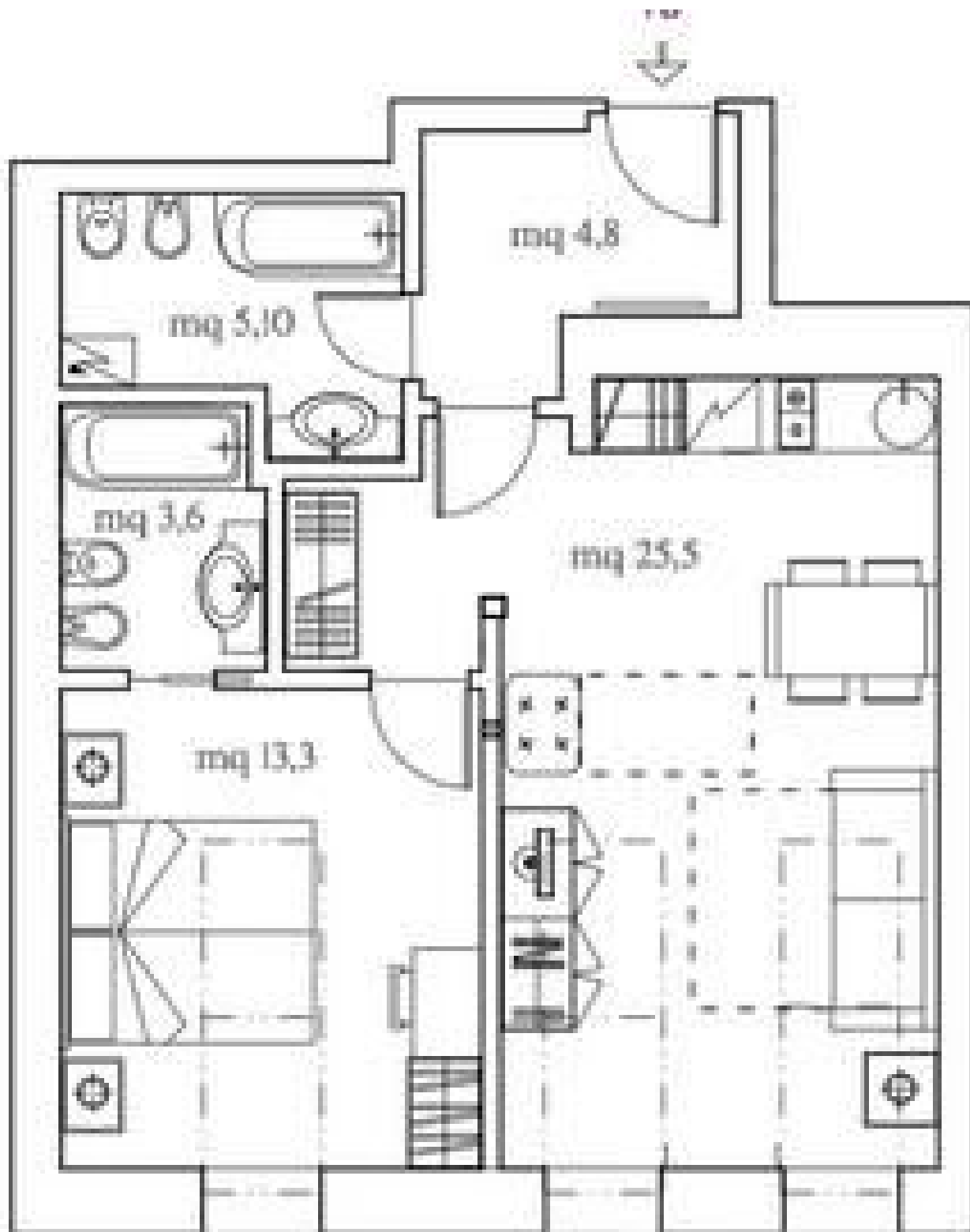
* Area of the unit according to the Civil Code. The area consists of the sum total area of the entire unit bounded by perimeter walls.



Apartment One-bedroom (2+kk)

Sold

52 m², Prague 2, Nové Město, Háčkova



Plán je pouze orientační a nemusí odpovídat skutečnosti.
Všechny rozměry jsou v metrech.

Toto je orientační plán, který je určen pouze pro informační účely a není závazný. Všechny rozměry jsou v metrech.