



## House Five-bedroom (6+1)

170 m<sup>2</sup>, Prague 6, Dejvice

**Sold**





## House Five-bedroom (6+1)

**Sold**170 m<sup>2</sup>, Prague 6, Dejvice

Plot	241 m <sup>2</sup>
Foot print	83 m <sup>2</sup>
Garden	158 m <sup>2</sup>
Parking	Garage.
Garage	Yes
Cellar	Yes
PENB	G
Reference number	30553

This semi-detached Art Deco villa from the 1920s, illuminated by a large number of windows, stands in a garden on a quiet street in the prestigious Hanspaulka residential quarter, which is famous for its connection to many cultural and architectural figures.

On the ground floor, there is a large separate kitchen with windows overlooking the garden, a guest bedroom/study, a toilet, and a foyer. The 1st floor consists of a living room divided into 2 parts and a bedroom with a bathroom (shower). On the 2nd floor, there are 2 bedrooms, a dressing room, and a bathroom with a bathtub and toilet. An attic bedroom with a **view of the Prague Castle** is accessible by a spiral staircase. The bedroom has an en-suite bathroom (shower, toilet). The basement features a pantry, cold storage, and a laundry room/closet.

The facilities include a **number of original elements** (for example radiators), wooden windows, **parquet** floors, floating wooden floors and tiles, built-in closets, a piano, crystal chandeliers, an alarm system with PCO connection, and a videophone. **Garage parking.** A major reconstruction took place around 1996, the roof was repaired and a residential attic was built in 2007, and the bathrooms were modernized and a new gas boiler was installed in 2012.

A sought-after neighborhood with many architecturally important villas, which adjoins the **Šárka-Lysolaje nature park** and **Baba** natural monument. There is a bus that goes to the Bořislavka metro station (4 minutes) or Hradčanská (10 minutes). Within walking distance, there is a kindergarten and an elementary school, a supermarket, a pharmacy, a restaurant, a bank, a tennis club, a sports complex, and playgrounds. There are several international schools within short driving distance. The location is also conveniently accessible from the airport.

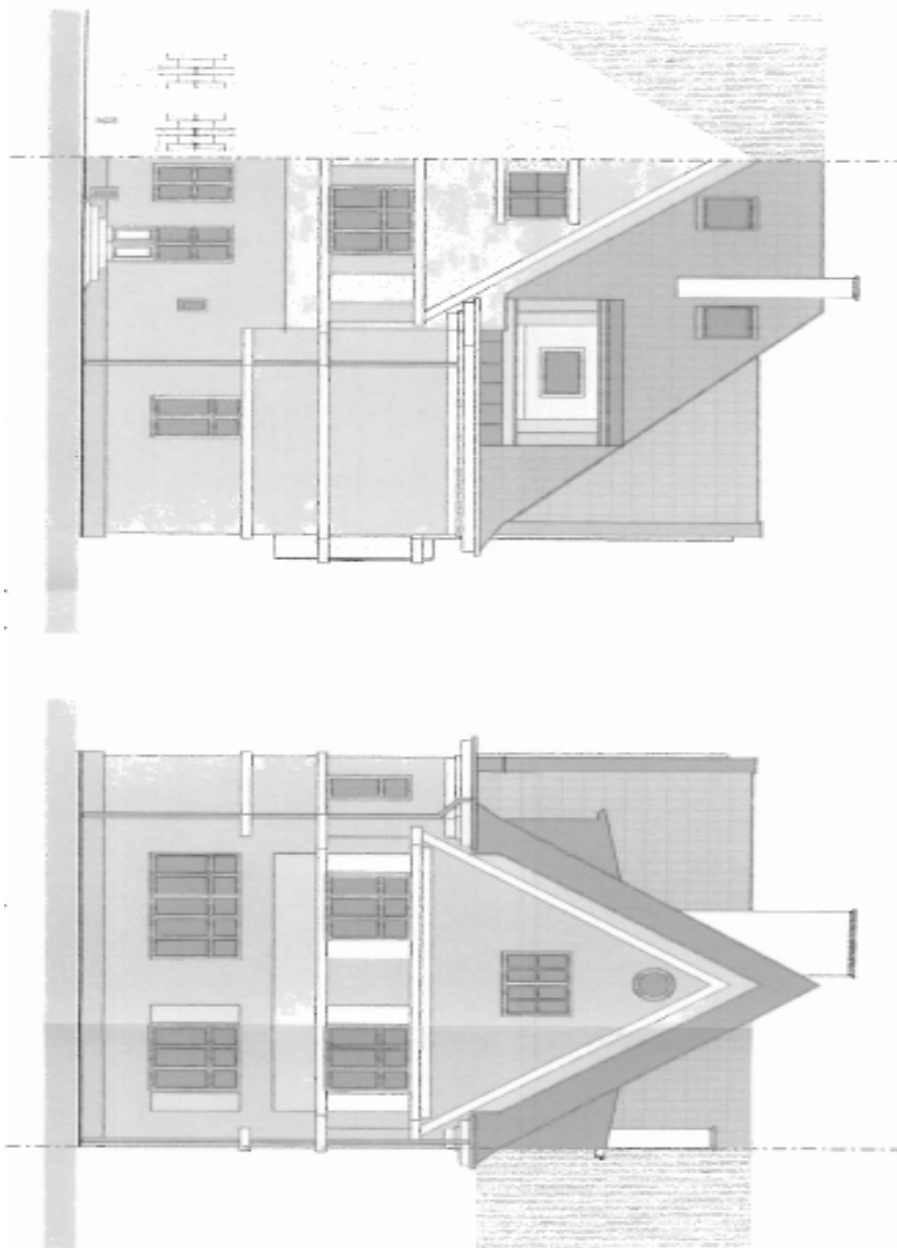
Interior 170 m<sup>2</sup>, cellar 10 m<sup>2</sup>, built-up area 83 m<sup>2</sup>, garden 158 m<sup>2</sup>.



## House Five-bedroom (6+1)

170 m<sup>2</sup>, Prague 6, Dejvice

**Sold**

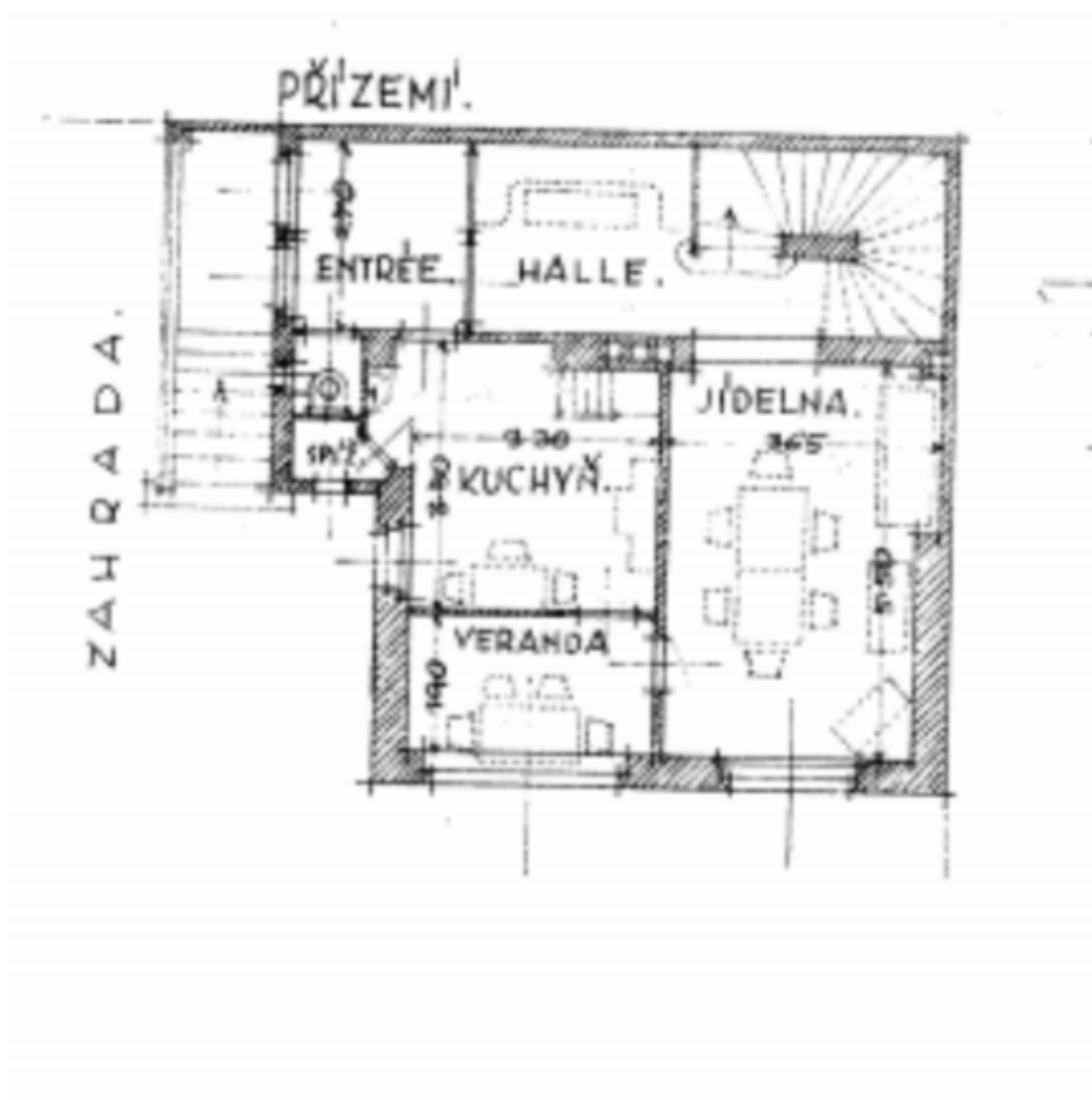




## House Five-bedroom (6+1)

170 m<sup>2</sup>, Prague 6, Dejvice

Sold

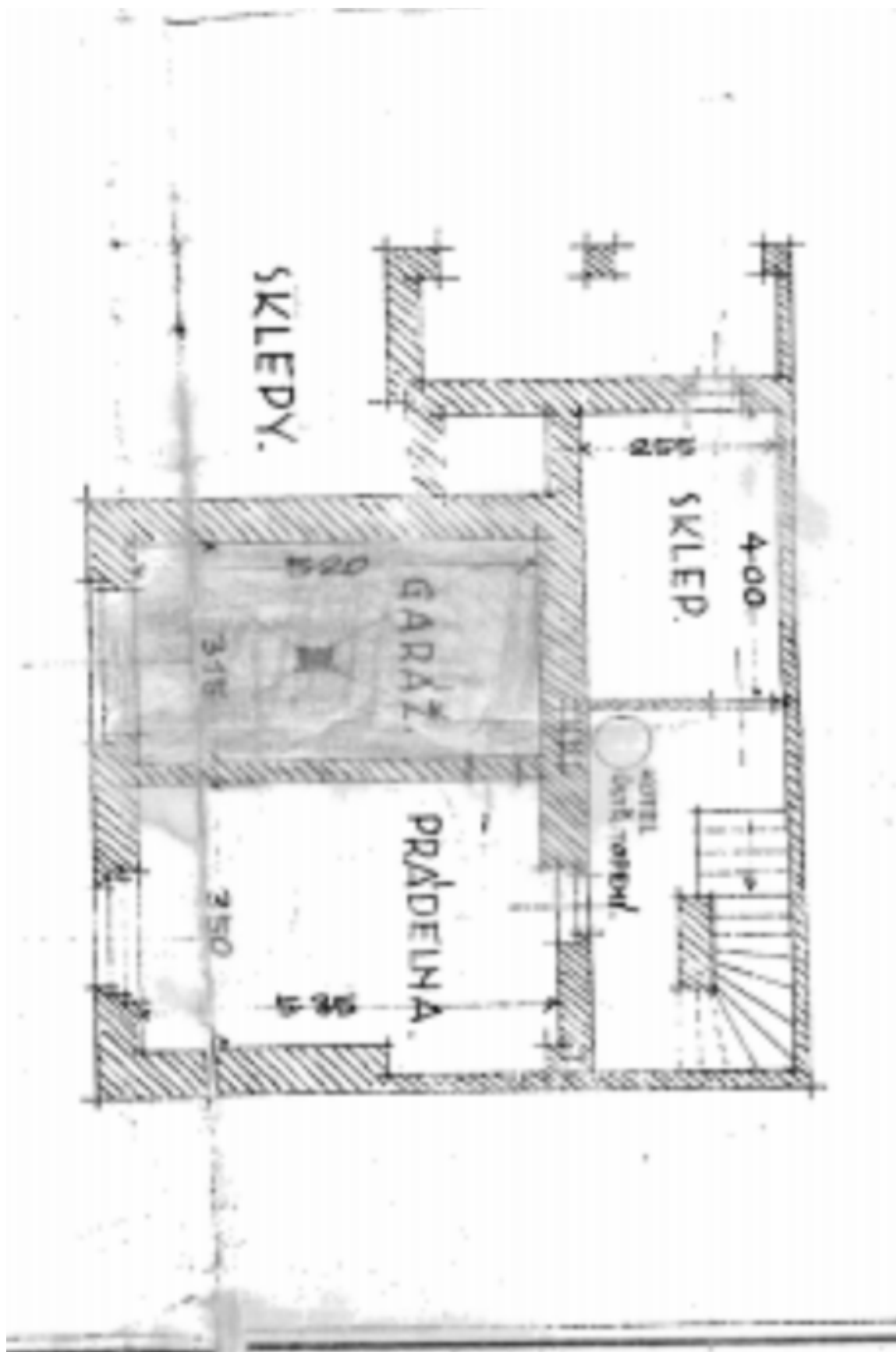




# House Five-bedroom (6+1)

Sold

170 m<sup>2</sup>, Prague 6, Dejvice





# House Five-bedroom (6+1)

170 m<sup>2</sup>, Prague 6, Dejvice

**Sold**





## House Five-bedroom (6+1)

170 m<sup>2</sup>, Prague 6, Dejvice

Sold

