



Apartment One-bedroom (2+kk)

Sold

79 m², Prague 10, Vršovice, Košická

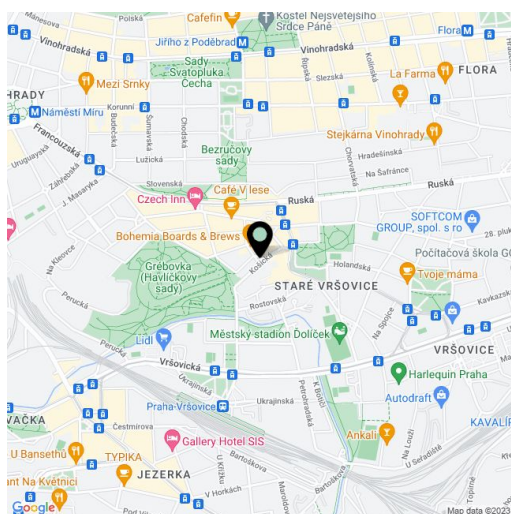


Apartment One-bedroom (2+kk)

Sold

79 m², Prague 10, Vršovice, Košická

Total area	79 m ²
Parking	-
Cellar	-
Service price	1 930 CZK monthly
PENB	G
Reference number	30639



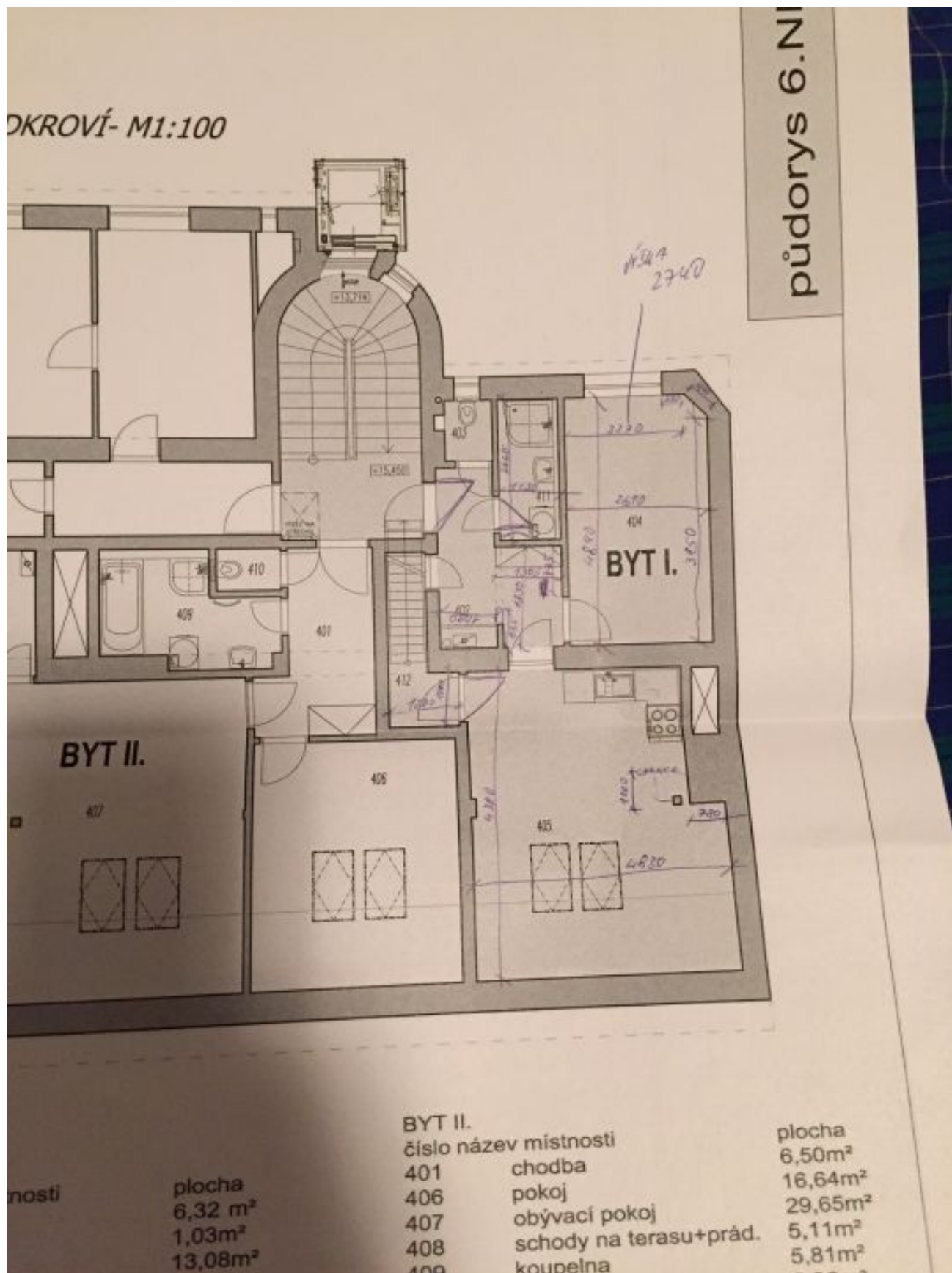
* Area of the unit according to the Civil Code. The area consists of the sum total area of the entire unit bounded by perimeter walls.



Apartment One-bedroom (2+kk)

Sold

79 m², Prague 10, Vršovice, Košická

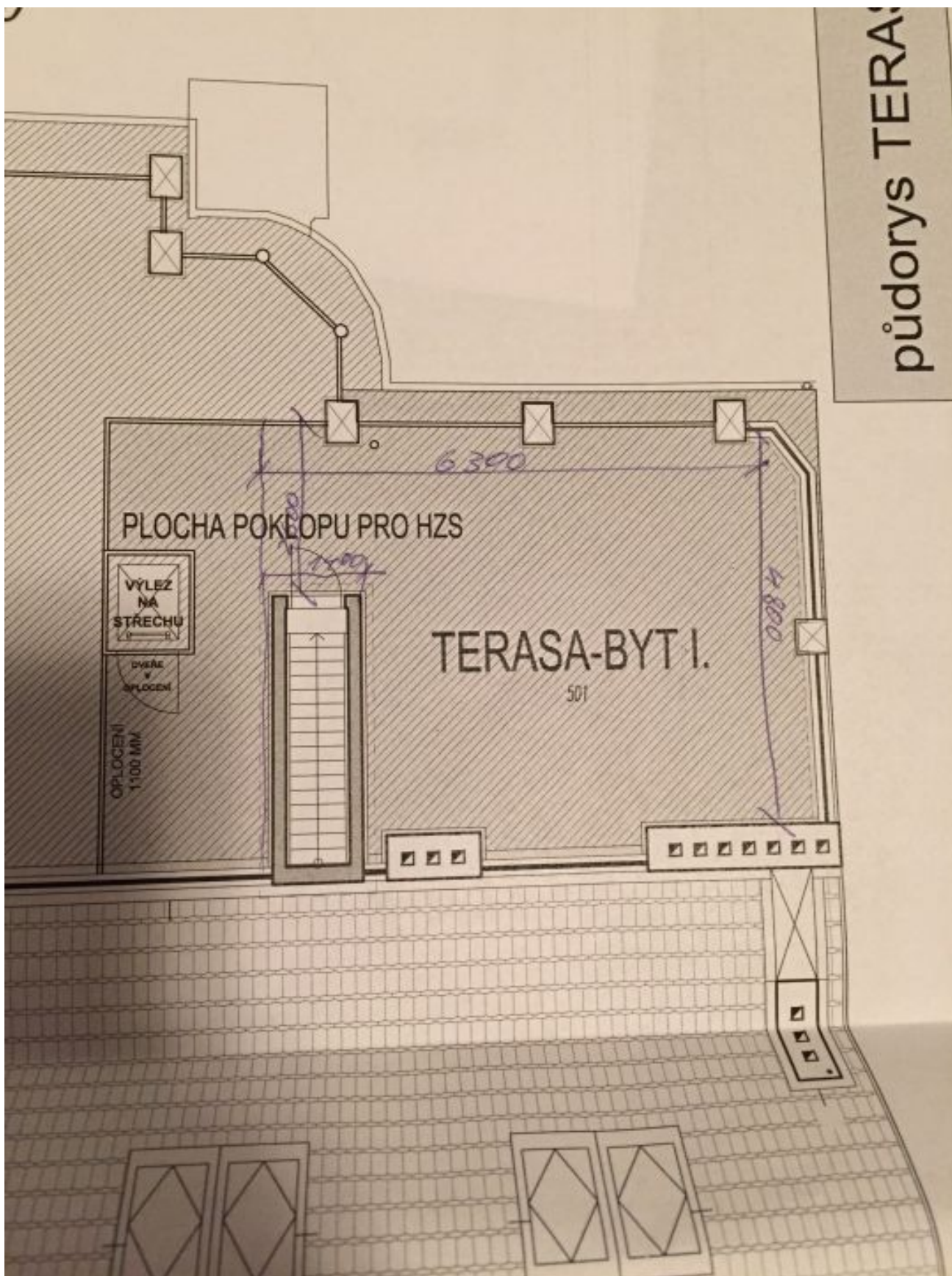




Apartment One-bedroom (2+kk)

Sold

79 m², Prague 10, Vršovice, Košická



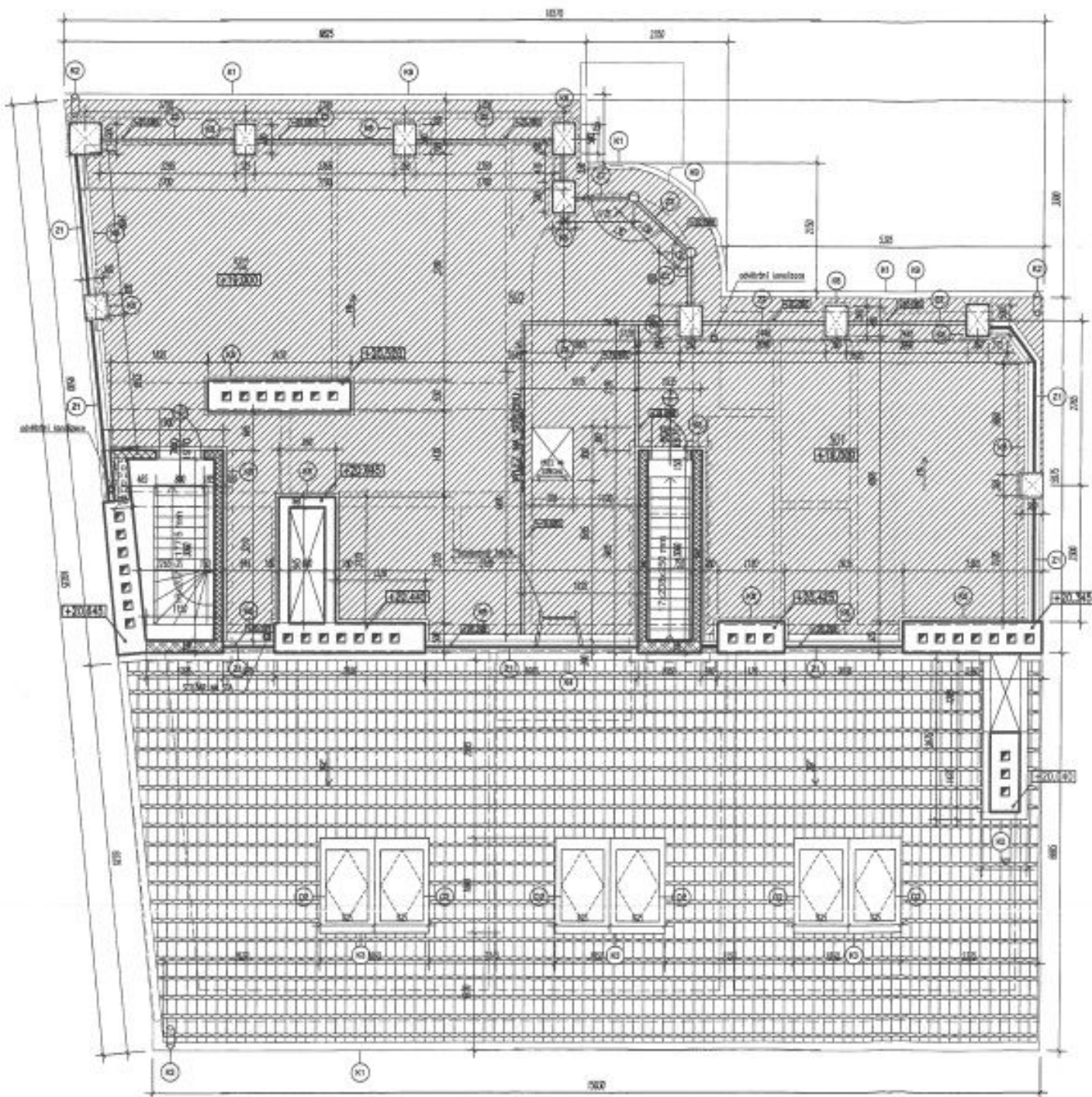


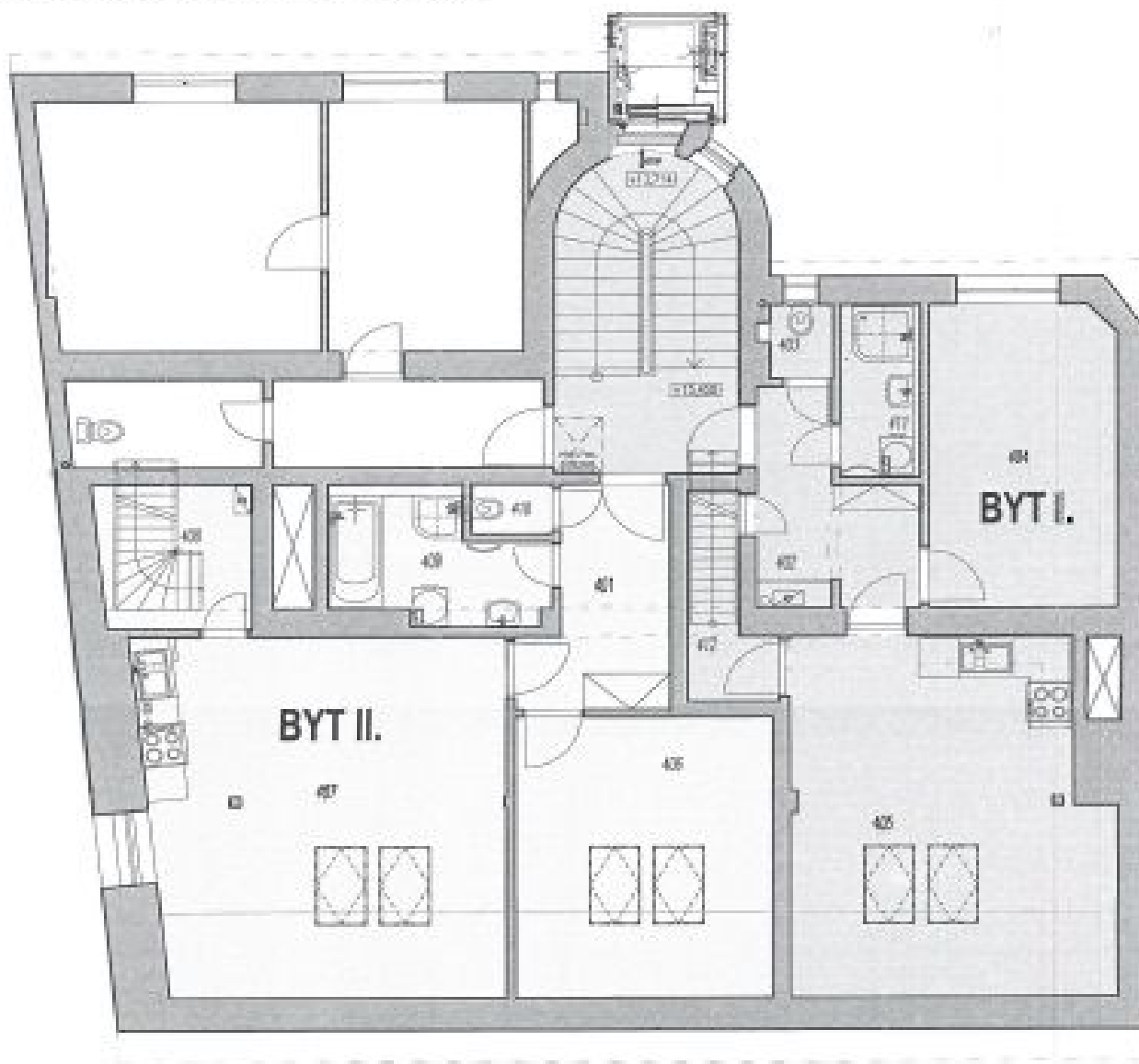
Apartment One-bedroom (2+kk)

Sold

79 m², Prague 10, Vršovice, Košická

PŮDORYS TERASY-M1:75



**Apartment One-bedroom (2+kk)**79 m², Prague 10, Vršovice, Košická**Sold****PŮDORYS PODKROVÍ- M1:100****půdorys 6.N****legenda místností**

BYT I.	název místnosti	plocha
402	chodba	6,32 m ²
403	WC	1,03m ²
404	ložnice	13,08m ²
405	obývací pok.+kuchyně	25,52m ²
411	sprcha+prádelna	3,21m ²
412	schodiště	3,10m ²
celkem		52,34m²

BYT II.	číslo	název místnosti	plocha
401		chodba	6,50m ²
406		pokoj	16,64m ²
407		obývací pokoj	29,65m ²
408		schody na terasu+prád.	5,11m ²
409		koupelna	5,81m ²
410		WC	0,96m ²
celkem			64,67m²
plocha celkem			117,01m²

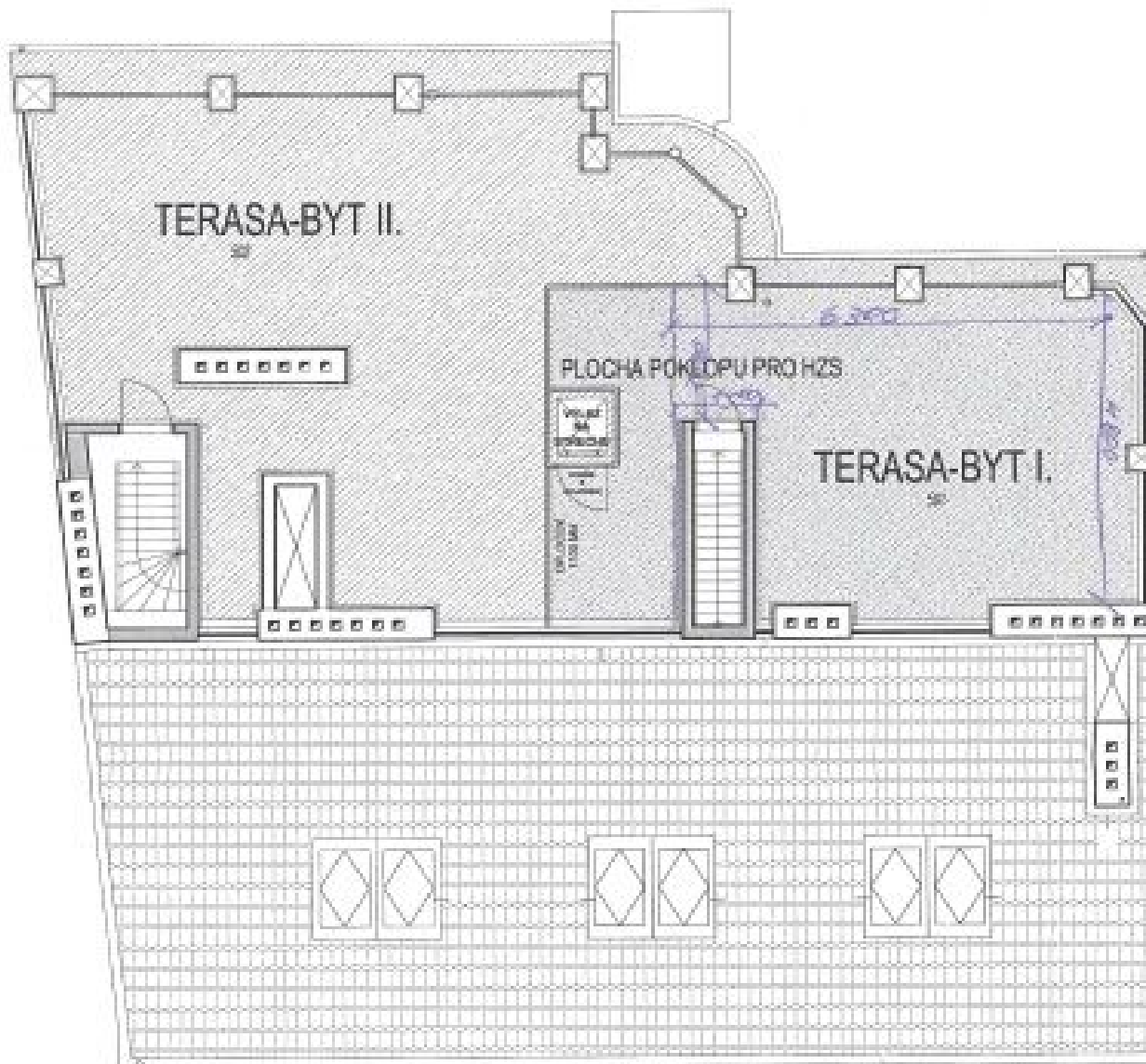


Apartment One-bedroom (2+kk)

79 m², Prague 10, Vršovice, Košická

Sold

PŮDORYS TERASY- M1:100



legenda místností

číslo	název místnosti	plocha
501	terasa	28,32m ²
	celkem	28,32m ²
502	terasa	65,86m ²
	celkem	65,86m ²
	PLOCHA POKLOPU PRO HZS	1,31m ²
	plocha celkem	95,49m²