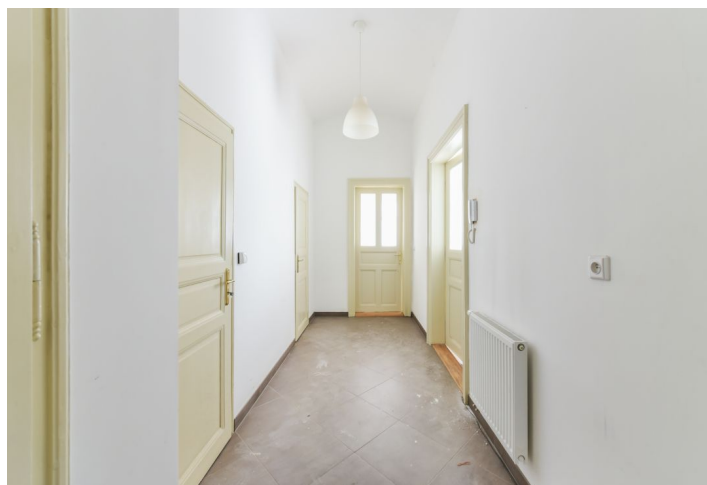




Apartment One-bedroom (2+1)

Sold

87.5 m², Praha 4, Nusle, Čestmírova





Apartment One-bedroom (2+1)

Sold87.5 m², Praha 4, Nusle, Čestmírova

Total area	88 m ²
Parking	-
Cellar	Yes
PENB	E
Reference number	30640

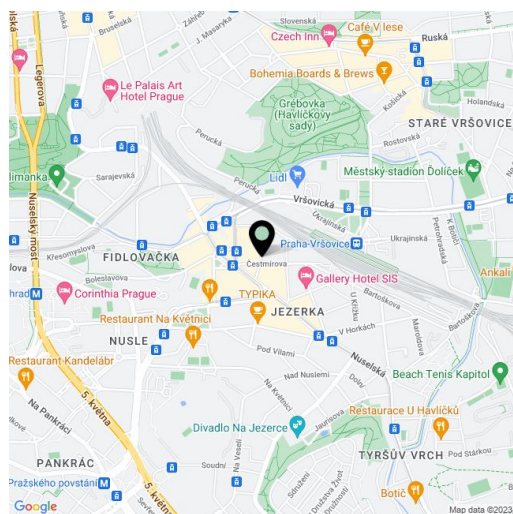
This bright apartment with preserved original elements is situated on the 1st floor of an Art Nouveau building with an elevator. The corner building is located on a quiet side street just a few steps from Bratří Synků Square, in a place with full urban amenities, great connections to the center, and close to several parks.

The layout consists of a living room and a south-facing bedroom, separate kitchen, foyer, bathroom, and a storeroom.

The apartment has been partially reconstructed. It features casement original windows. There is a connection for a gas boiler. The purchase price includes a cellar. In 2018, the building underwent a partial reconstruction, which refurbished the facade and the common areas.

The surrounding area has a full spectrum of services. Within walking distance, there is a health center, a kindergarten, an elementary school, and a high school, a post office, 2 theaters, a lot of shops, cafes, pubs, and restaurants. The Bratří Synků Square and Otakarova tram stops are just a few steps from the building, the ride to the I. P. Pavlova metro station takes **5 minutes**, and to the Muzeum transfer station - 7 minutes. Folimanka Park or the romantic Grébovka can be reached on foot.

Total floor area 87.5 m².



* Area of the unit according to the Civil Code. The area consists of the sum total area of the entire unit bounded by perimeter walls.



Apartment One-bedroom (2+1)

87.5 m², Praha 4, Nusle, Čestmírova

Sold



**Apartment One-bedroom (2+1)**87.5 m², Praha 4, Nusle, Čestmírova**Sold**

2.podlaží **87,5 m²**

01	Chodba	7,6
02	Obývací pokoj	26,1
03	Kuchyň	16,6
04	Pokoj	22,9
05	Koupelna	3,4
06	WC	1,1
07	Komora	1,4



Apartment One-bedroom (2+1)

87.5 m², Praha 4, Nusle, Čestmírova

Sold



umístění bytu v objektu