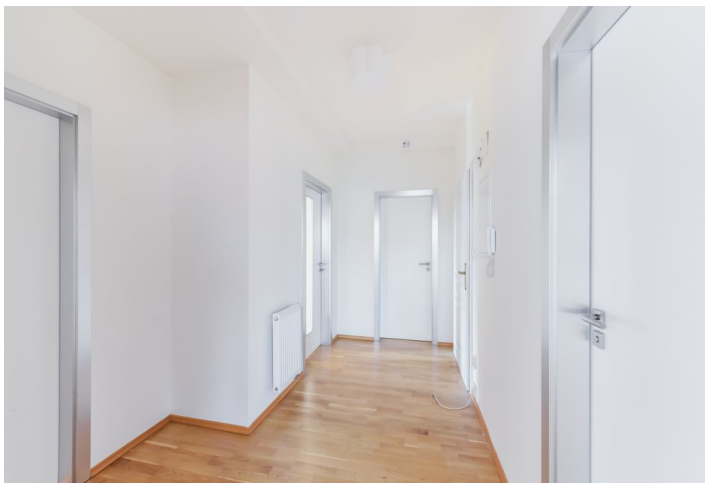




Apartment Two-bedroom (3+kk)

Sold

96 m², Prague 4, Nusle, Čestmírova





Apartment Two-bedroom (3+kk)

Sold96 m², Prague 4, Nusle, Čestmírova

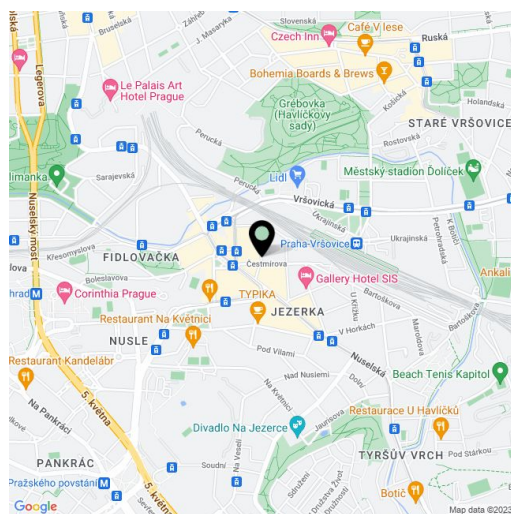
Total area	96 m ²
Parking	-
Cellar	Yes
PENB	E
Reference number	30645

This bright loft apartment is situated on the 5th floor of an Art Nouveau building with an elevator. The corner building is located on a quiet side street just a few steps from Bratří Synků Square, in a neighborhood with full urban amenities, great connections to the center, and close to several parks.

The layout features a south-facing living room with a kitchen corner, two bedrooms, a foyer, a bathroom, and a guest toilet. The unit has been renovated. The purchase price includes a cellar. In 2018, the building underwent a partial reconstruction, which refurbished the facade and the common areas.

The surrounding area has a full spectrum of services. Within walking distance, there is a health center, a kindergarten, an elementary school, and a high school, a post office, 2 theaters, a lot of shops, cafes, pubs, and restaurants. The Bratří Synků Square and Otakarova tram stops are just a few steps from the building, the ride to the I. P. Pavlova metro station takes 5 minutes, and to the Muzeum transfer station - 7 minutes. Folimanka Park or the romantic Grébovka Park can be reached on foot.

The total floor area 96 m².



* Area of the unit according to the Civil Code. The area consists of the sum total area of the entire unit bounded by perimeter walls.



Apartment Two-bedroom (3+kk)

96 m², Prague 4, Nusle, Čestmírova

Sold



**Apartment Two-bedroom (3+kk)**96 m², Prague 4, Nusle, Čestmírova**Sold**

6.podlaží **96,0 m²**

01	Chodba	6,7
02	Obývací pokoj+kk	27,8
03	Pokoj	19,2
04	Pokoj	27,2
05	WC	3,0
06	Koupelna	5,8



Apartment Two-bedroom (3+kk)

96 m², Prague 4, Nusle, Čestmírova

Sold



umístění bytu v objektu