



Apartment One-bedroom (2+kk)

Sold

59.8 m², Praha 4, Nusle, Čestmírova





Apartment One-bedroom (2+kk)

Sold59.8 m², Praha 4, Nusle, Čestmírova

Total area	60 m ²
Parking	-
Cellar	Yes
PENB	E
Reference number	30647

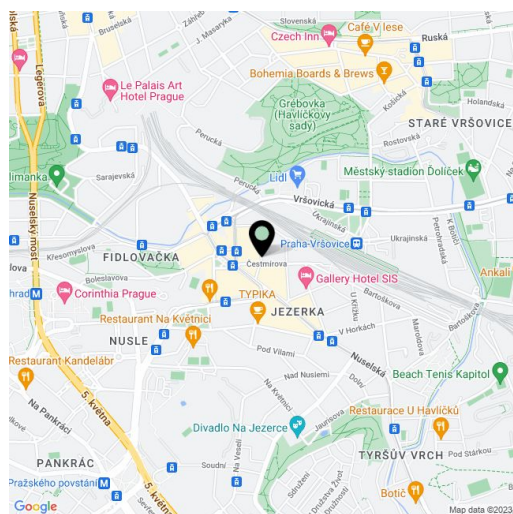
This bright apartment with preserved original features is situated on the 4th floor of an Art Nouveau building with an elevator. The corner building is located on a quiet side street just a few steps from Bratří Synků Square, in a place with full urban amenities, great connections to the center, and close to several parks.

The layout consists of a south-facing living room with a kitchen corner, a bedroom, a foyer, a bathroom, and a storeroom.

The apartment has been reconstructed. It features original casement windows. The purchase price includes a cellar. In 2018, the building underwent a partial reconstruction, which refurbished the facade and the common areas.

The surrounding area has a full spectrum of services. Within walking distance, there is a health center, a kindergarten, an elementary school, and a high school, a post office, 2 theaters, a lot of shops, cafes, pubs, and restaurants. The Bratří Synků Square and Otakarova tram stops are just a few steps from the building, the ride to the I. P. Pavlova metro station takes 5 minutes, and to the Muzeum transfer station - 7 minutes. Folimanka Park or the romantic Grébovka can be reached on foot.

The total floor area 59.8 m².



* Area of the unit according to the Civil Code. The area consists of the sum total area of the entire unit bounded by perimeter walls.



Apartment One-bedroom (2+kk)

59.8 m², Praha 4, Nusle, Čestmírova

Sold



**Apartment One-bedroom (2+kk)**59.8 m², Praha 4, Nusle, Čestmírova**Sold**

5.podlaží **59,8 m²**

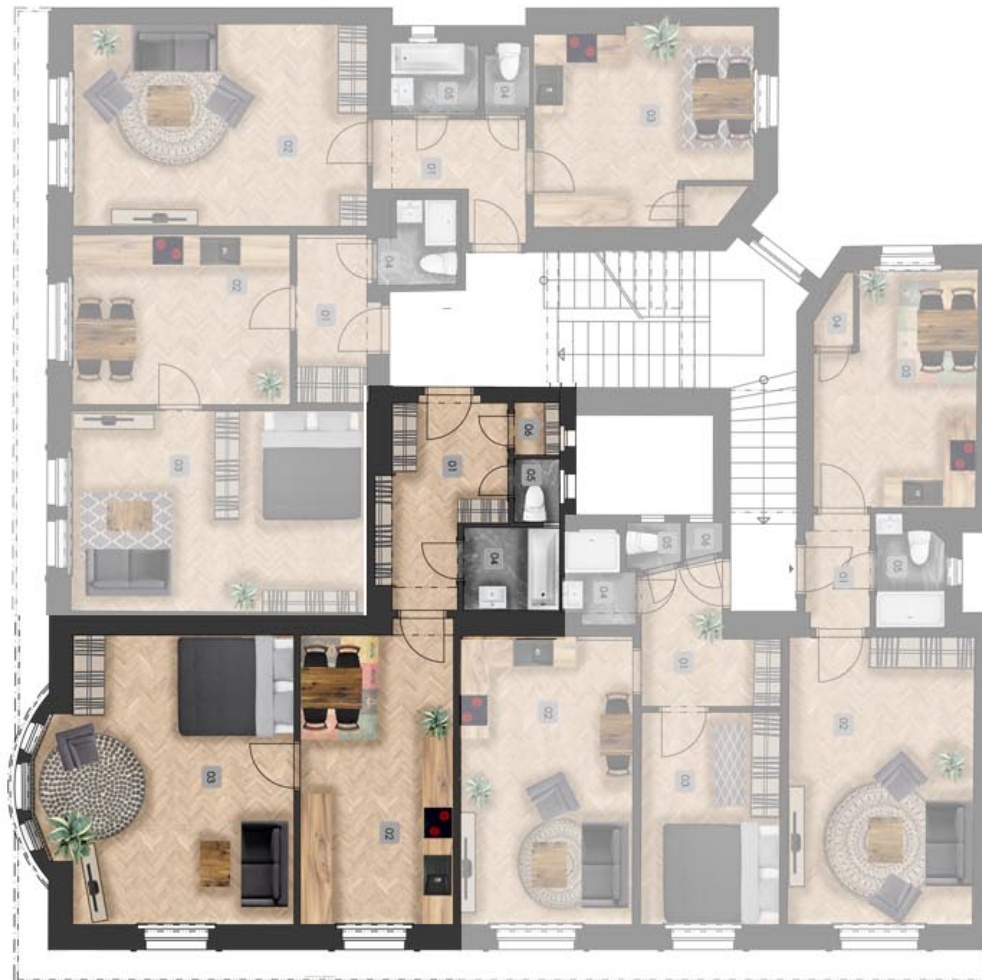
01	Chodba	7,8
02	Kuchyně	17,6
03	Obývací pokoj	26,8
04	Koupelna	3,1
05	WC	1,1
06	Komora	0,9



Apartment One-bedroom (2+kk)

59.8 m², Praha 4, Nusle, Čestmírova

Sold





Apartment One-bedroom (2+kk)

59.8 m², Praha 4, Nusle, Čestmírova

Sold



umístění bytu v objektu