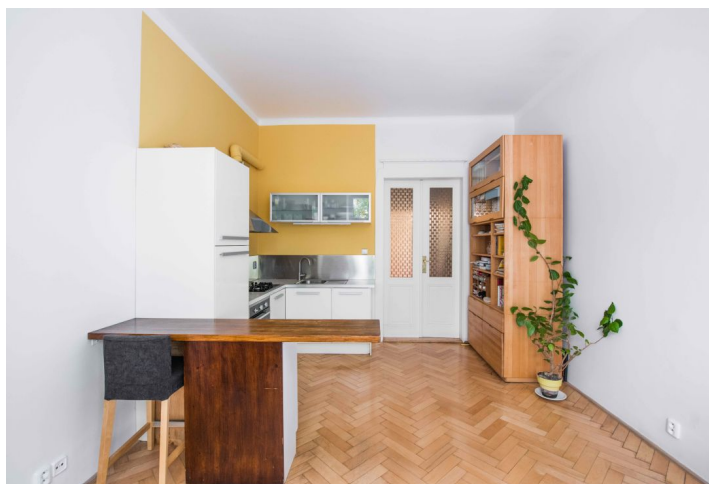




Apartment One-bedroom (2+kk)

Sold

43 m², Prague 6, Dejvice, Mařákova





Apartment One-bedroom (2+kk)

Sold43 m², Prague 6, Dejvice, Mařákova

Total area	43 m ²
Parking	-
Cellar	-
PENB	G
Reference number	30729

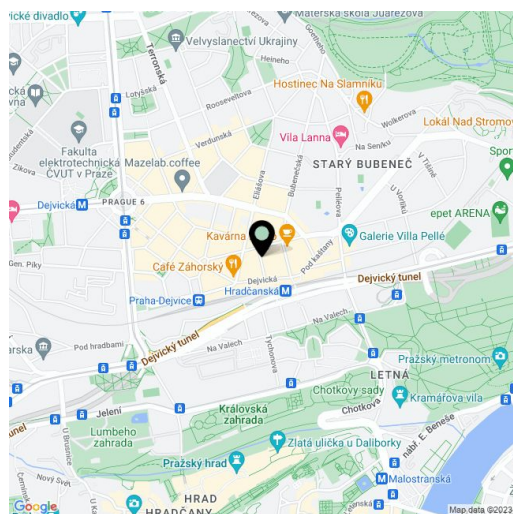
This 1-bedroom apartment in an Art Nouveau apartment building from 1910 is situated in a sought-after location between Dejvice and Bubeneč, 200 meters from the Hradčanská metro station and not far from two peaceful parks.

The apartment is situated on the elevated ground floor (on the 1st-floor level). The layout consists of a living room with a kitchen, a **bedroom facing the quiet courtyard**, a bathroom with a toilet and a bathtub, and an entrance hall.

The apartment was reconstructed 9 years ago, including the installation of new heating and all the distribution systems. In the living room, there are **wooden parquet floors**, laminate flooring in the bedroom, and the bathroom has bright, large-format tiles. The facilities also include **built-in wardrobes in the bedroom**, underfloor heating in the bathroom, and a gas boiler for heating.

The apartment is located in the very popular Prague neighborhood of Dejvice with excellent urban amenities, perfect access to the city center, and a wide range of sports and cultural activities. It sits on a **quiet street** with almost no traffic. There are two large parks within walking distance - Letenské sady and Stromovka. Just a few steps from the house there are vegetable and fruit markets, and larger **farmers' markets** are regularly held on nearby Vítězné náměstí Square. There are **theaters, galleries, restaurants, bars, bistros, many shops, and schools and kindergartens** in the area. The **Hradčanská metro station** and tram stop are just a 5-minute walk from the house.

Interior 42.92 m².



* Area of the unit according to the Civil Code. The area consists of the sum total area of the entire unit bounded by perimeter walls.