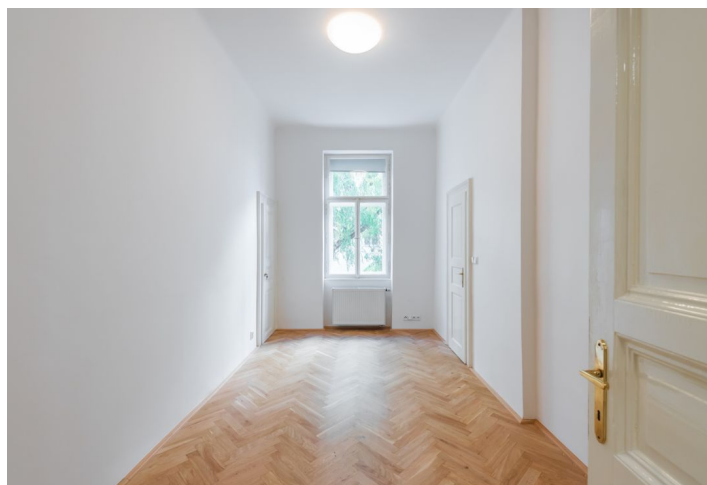




Apartment One-bedroom (2+1)

Rented

65 m², Prague 5, Smíchov, Na Bělidle





Apartment One-bedroom (2+1)

Rented

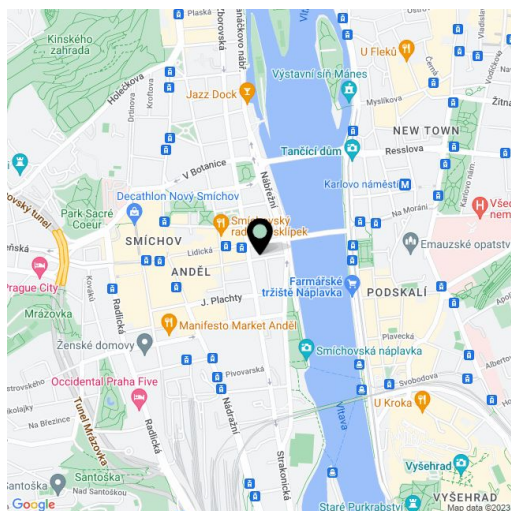
65 m², Prague 5, Smíchov, Na Bělidle

Total area	65 m ²
Parking	-
Cellar	-
PENB	G
Reference number	30856
Available from	Immediately

This renovated 1-bedroom flat is on the second floor of a fully refurbished traditional residential building with no lift. Located steps from the Vltava river and within walking distance of the Anděl commercial center and metro station. Safe and quiet living with easy connections to the city center.

The flat has a living room, a fully fitted eat-in kitchen, one bedroom with an en-suite shower bathroom and a fitted **walk-in closet**, and a separate toilet.

High ceilings, **solid wood parquet floors**, **granite floors**, ceramic tiling, built-in shoe storage, dishwasher, washer, gas heating, Astra satellite connection, WLAN, security entry door. Nice common garden. Deposit for service charges and utilities CZK 3500/month.



* Area of the unit according to the Civil Code. The area consists of the sum total area of the entire unit bounded by perimeter walls.



Apartment One-bedroom (2+1)

65 m², Prague 5, Smíchov, Na Bělidle

Rented

