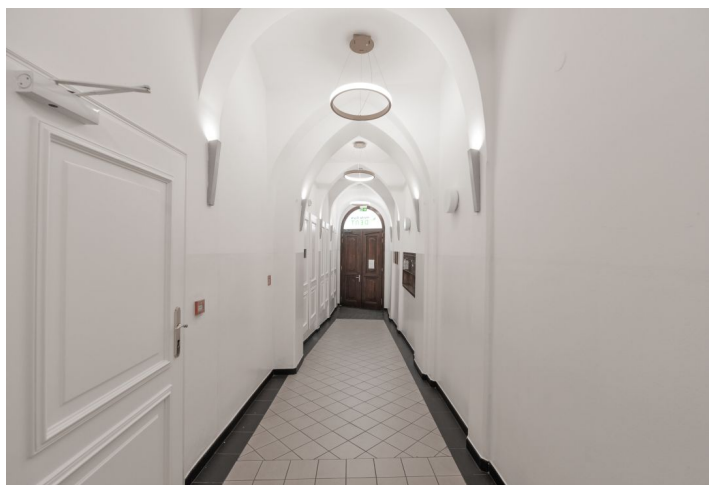




# Office building

Prague 1, Nové Město, Vodičkova

Rented





## Office building

Prague 1, Nové Město, Vodičkova

Rented

Service price	100 CZK monthly per m <sup>2</sup>
Total building area	926 m <sup>2</sup>
Tenant consumption	—
Parking	-
Parking service charges	—
Parking ratio	—
Certification	—
PENB	G
Reference number	30881

**Historic building with an elevator in the heart of Prague offers elegant refurbished office space for lease. The building features high quality administrative and technical facilities and an on-site restaurant.**

### Location:

Attractive location in the financial and commercial center of the city, with excellent access to public transportation.

### Features and services:

ISDN telephone lines  
Internet connection  
Air conditioning  
Modular suspended ceilings  
Parquet floors  
24/7 access  
Elevator  
Toilet and kitchenette  
Fan coil heating

Rental and service charges listed without VAT. Lessee pays no commission.



## Office building

Prague 1, Nové Město, Vodičkova

Rented



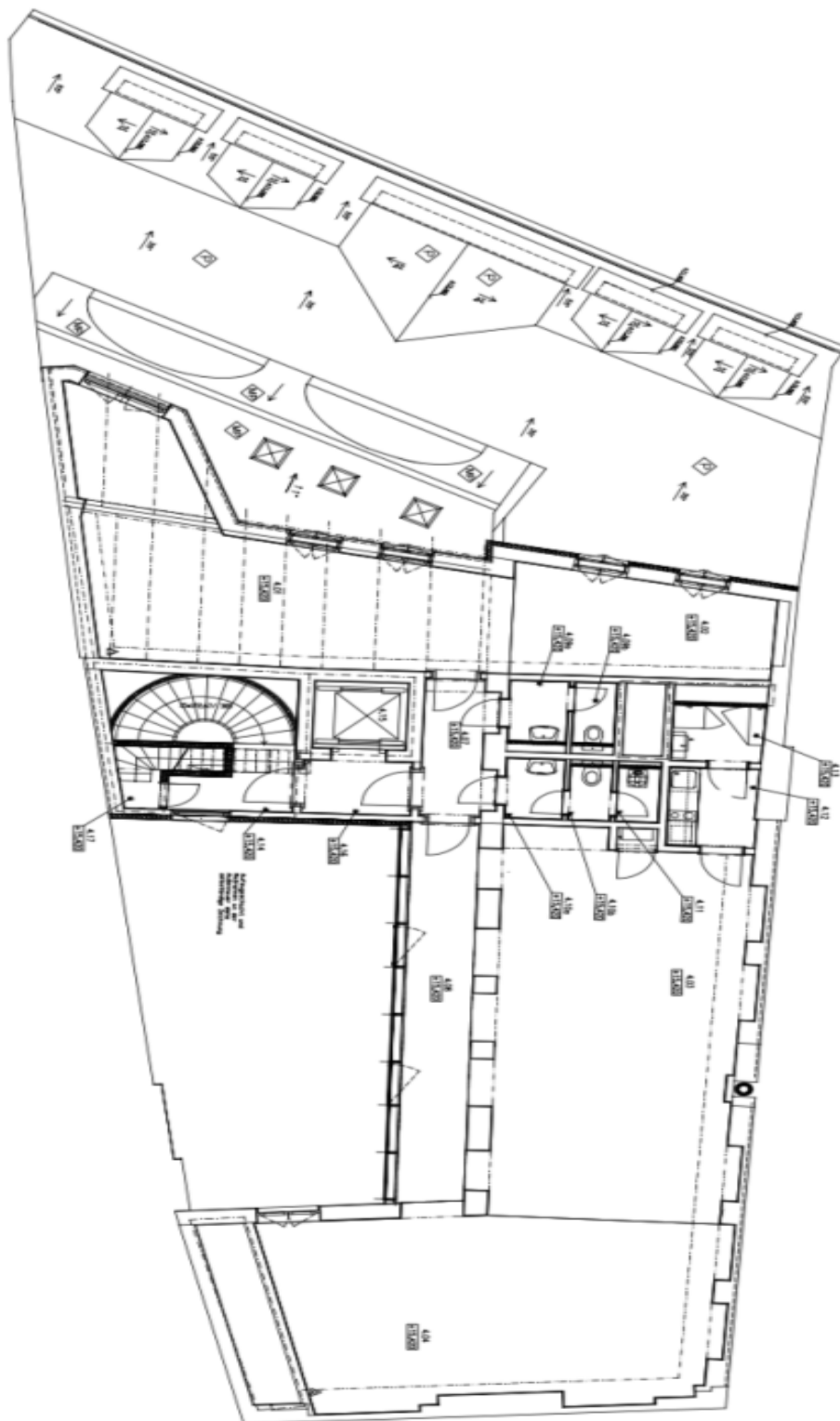




# Office building

Prague 1, Nové Město, Vodičkova

Rented



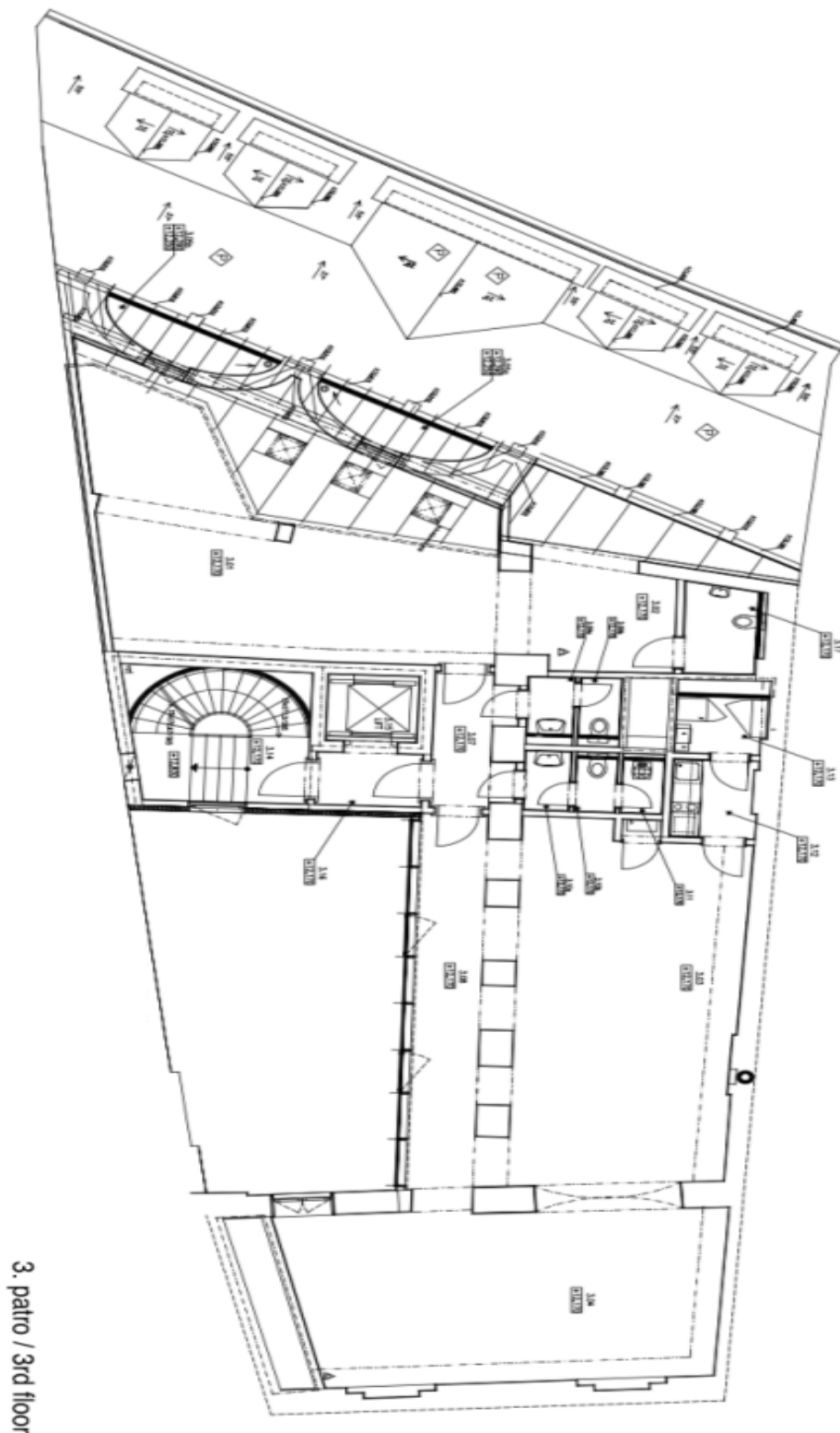
4. patro / 4th floor



# Office building

Prague 1, Nové Město, Vodičkova

Rented



3. patro / 3rd floor