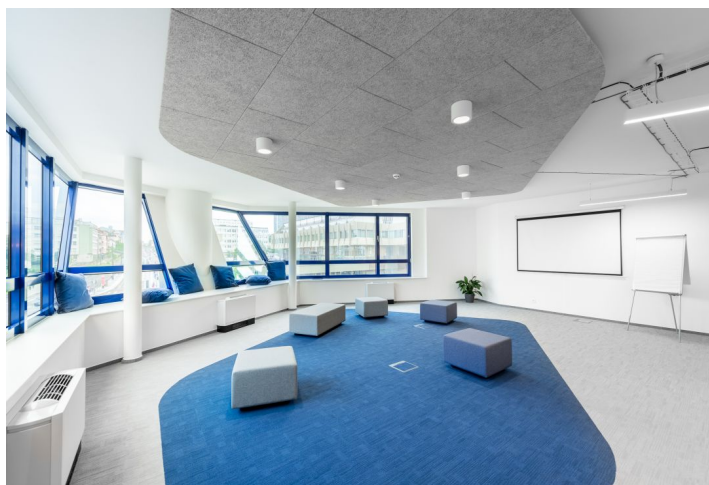
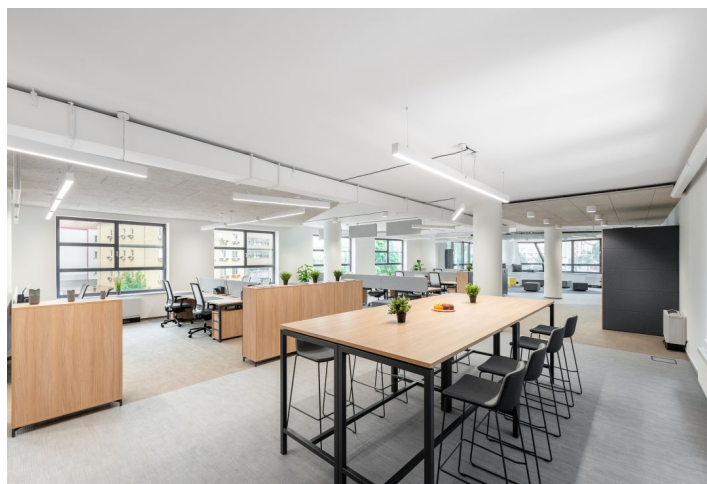
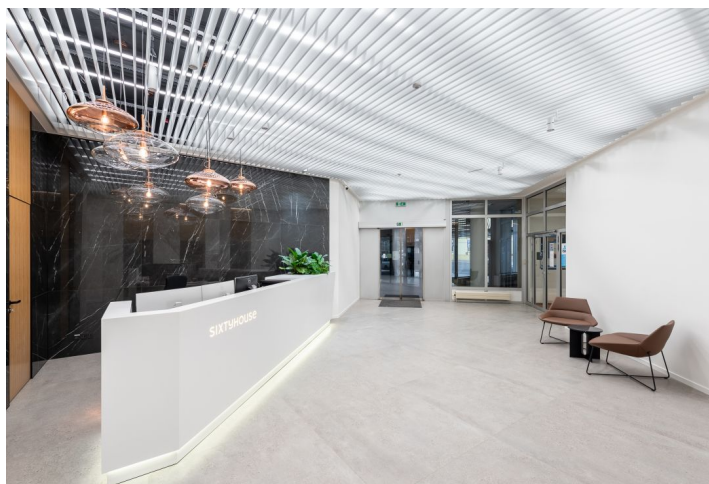


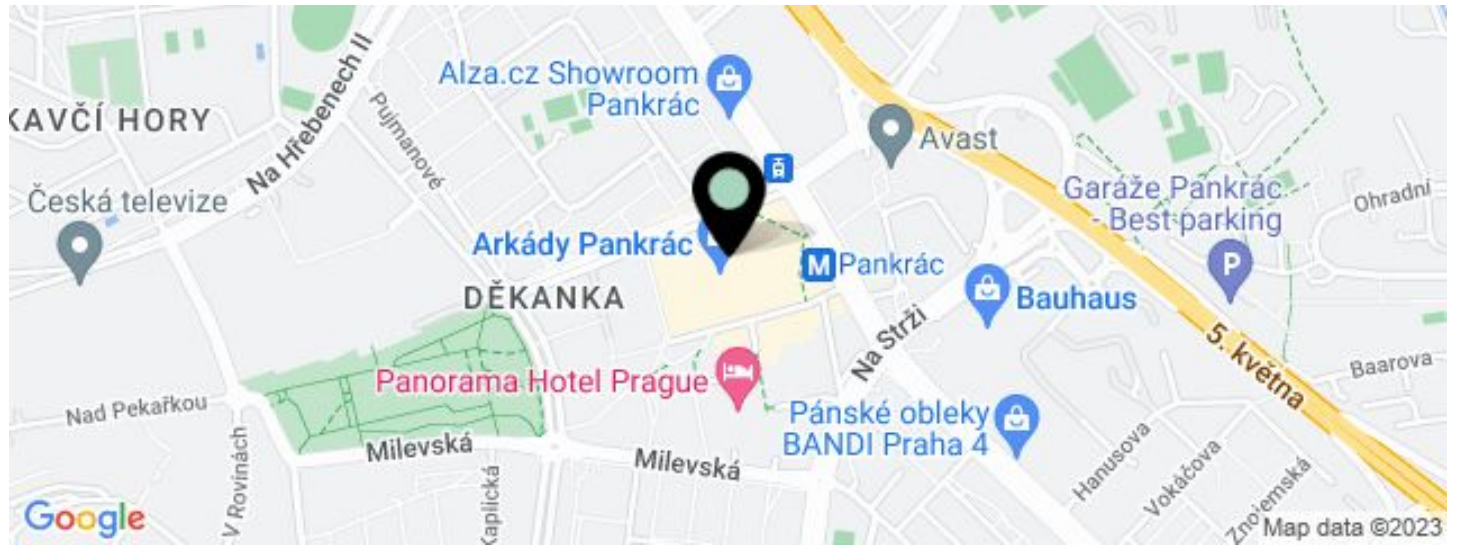


## Office building

292 m<sup>2</sup>, Prague 4, Pankrác, Na Pankráci

€ 18.00 / m<sup>2</sup> | CZK 455 / m<sup>2</sup>



**Office building****€ 18.00 / m<sup>2</sup> | CZK 455 / m<sup>2</sup>**292 m<sup>2</sup>, Prague 4, Pankrác, Na Pankráci

UNIT	AVAILABLE AREA	SERVICES	PARKING	MONTHLY RENT
Office space, 3rd floor	292 m <sup>2</sup>	160 CZK monthly per m <sup>2</sup>	EUR 130 / ps / month	€ 18 / m <sup>2</sup>

**Office building**292 m<sup>2</sup>, Prague 4, Pankrác, Na Pankráci**€ 18.00 / m<sup>2</sup> | CZK 455 / m<sup>2</sup>**

Service price	160 CZK monthly per m <sup>2</sup>
Total building area	6 203 m <sup>2</sup>
Tenant consumption	—
Parking	130 EUR
Parking service charges	—
Parking ratio	1:75
Certification	—
PENB	C
Reference number	30888

**Office space for lease in an office building in Prague 4, located in the south of the city center. For tenants there is a sufficient number of parking spaces in the underground garage. The building is close to the Congress Centre and the Arkády Pankrác shopping centre, accessible by one stop by bus or metro.**

**Location:**

The property is located near the metro station Pražského povstání (line C) and bus and tram stops, which are accessible on walking distance. Excellent transport connections with the Prague Ring Road.

**Features and Services:**

- Central reception
- 24-hour security
- Air conditioning
- Double floors
- Openable windows
- Underground parking
- Open space and stand-alone offices
- Garage parking space

Rents and charges listed without VAT. Lessee pays no commission.



Půdorys patra  
Floor plan

