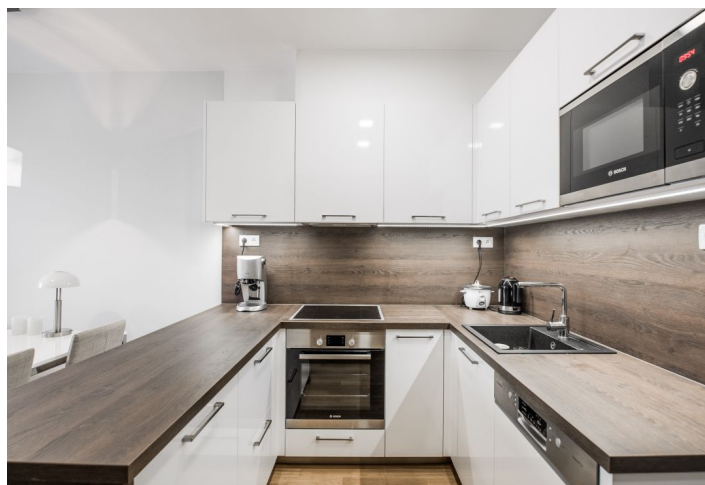




Apartment One-bedroom (2+kk)

Rented

56 m², Praha 6, Břevnov, Slavníkova





Apartment One-bedroom (2+kk)

Rented

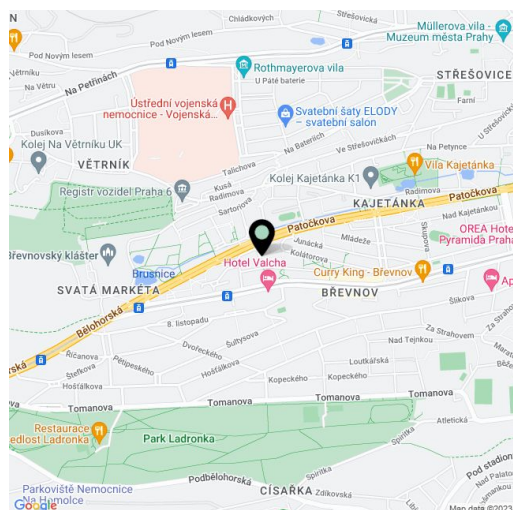
56 m², Praha 6, Břevnov, Slavníkova

Total area	60 m ²
Floor area*	56 m ²
Loggia	4 m ²
Parking	-
Cellar	Yes
PENB	G
Reference number	30919
Available from	Immediately

Furnished renovated 1-bedroom flat with an enclosed balcony, on the second floor of a building from 2001, with a lift and a shared courtyard garden. Located in a quiet Prague 6 neighborhood right next to the local health center, within easy reach of the Břevnov Monastery, the Prague Castle and the popular Ladronka park, and a few minutes by tram or bus to Hradčanská, Malostranská and Dejvická metro stations.

The flat includes a living room with a fully fitted open kitchen and dining area, and one bedroom with built-in wardrobes and **balcony** overlooking the surrounding greenery. There is a bathroom with bathtub, a separate toilet, and an entrance hall with built-in wardrobes.

Wooden floors, tiles, security entry door, built-in storage, central heating, washing machine, dishwasher, induction cooktop, microwave oven, **7 m² cellar**. Service charges, water and heating CZK 2800 per month. Electricity will be transferred to the tenant. Available from the end of October 2021(or earlier).



* Area of the unit according to the Civil Code. The area consists of the sum total area of the entire unit bounded by perimeter walls.