



Apartment Two-bedroom (3+kk)

Rented

92 m², Praha 1, Nové Město, Na Poříčí





Apartment Two-bedroom (3+kk)

Rented

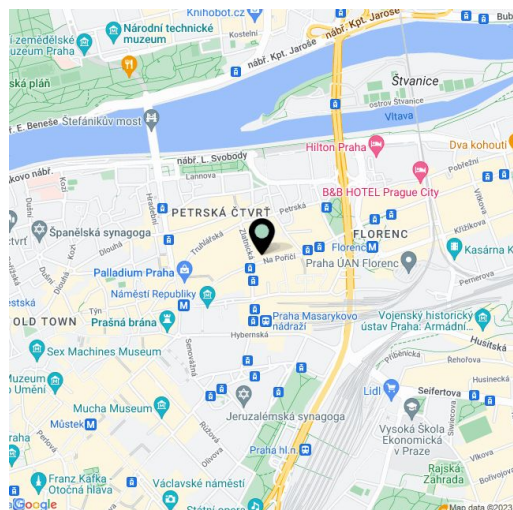
92 m², Praha 1, Nové Město, Na Poříčí

Total area	92 m ²
Parking	Parking available at CZK 4000/month + VAT in next door building.
Garage	Yes
Cellar	-
PENB	G
Reference number	30935
Available from	Immediately

Renovated unfurnished 2-bedroom flat on the 2nd floor of a well-kept historical building. Centrally located just a minute from Náměstí Republiky Square with multiple transportation links, around the corner from the Hilton Prague Old Town Hotel, and steps from the Palladium shopping mall.

The interior includes living room, a fully fitted eat-in kitchen, 2 bedrooms, a bathroom with shower and a toilet, and an entry hall with built-in wardrobes.

New parquet floors, new insulating windows, a lot of storage space. Deposit fo common building charges and utilities CZK 3500/month. Parking available in next door garages at approx. CZK 4000/month + VAT.



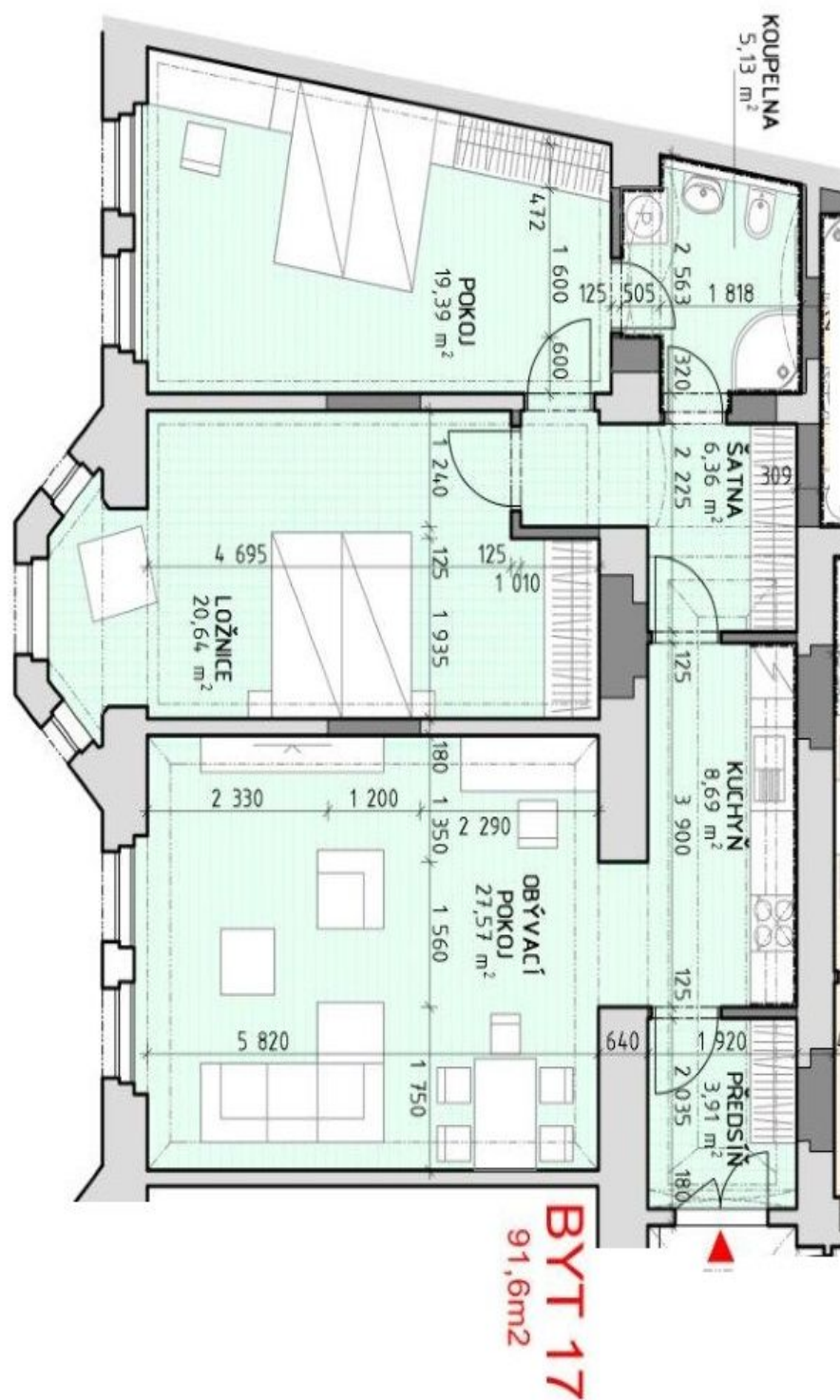
* Area of the unit according to the Civil Code. The area consists of the sum total area of the entire unit bounded by perimeter walls.



Apartment Two-bedroom (3+kk)

92 m², Praha 1, Nové Město, Na Poříčí

Rented

Byt 3+kk, 92 m² - Na Poříčí, Praha 1