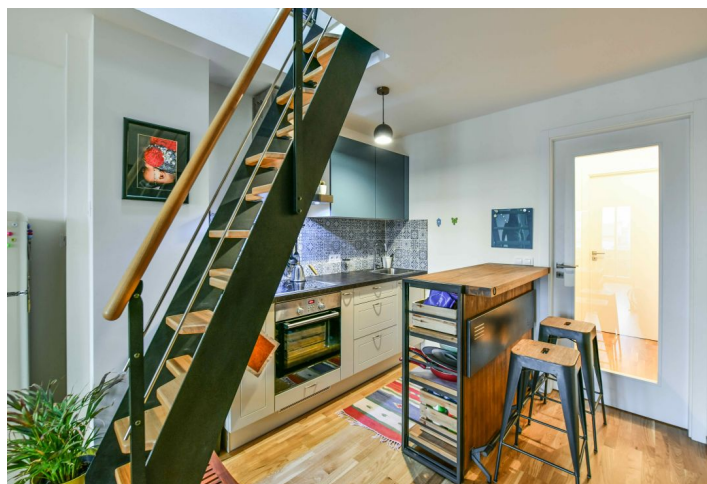
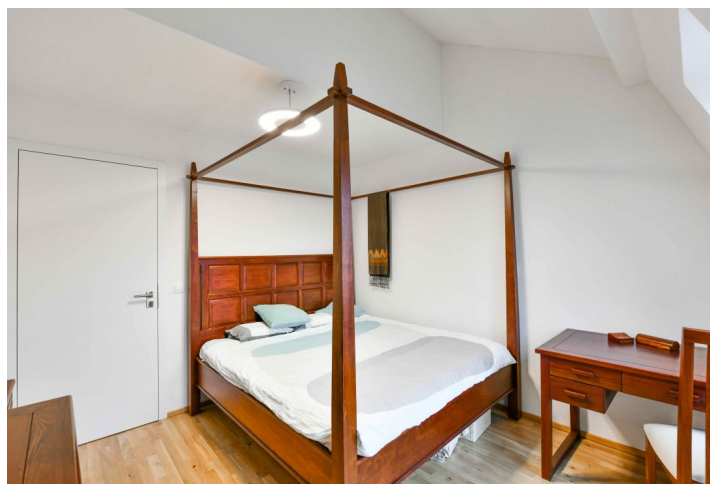




Apartment One-bedroom (2+kk)

€ 1 012 | CZK 25 000

47 m², Prague 7, Bubeneč, Korunovační





Apartment One-bedroom (2+kk)

€ 1 012 | CZK 25 000

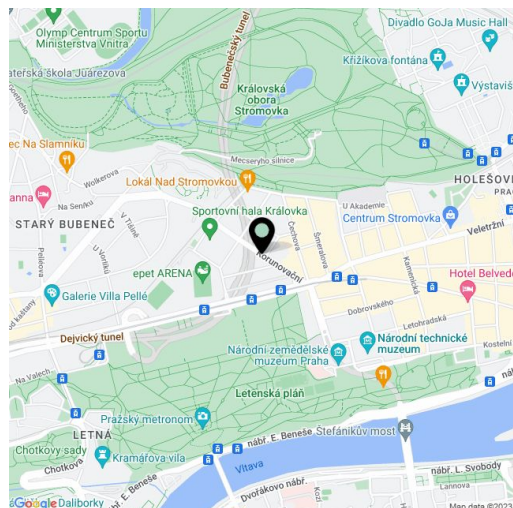
47 m², Prague 7, Bubeneč, Korunovační

Total area	52 m²
Floor area*	47 m²
Balcony	5 m²
Parking	-
Cellar	-
PENB	E
Reference number	30960
Available from	Immediately

This is a fully refurbished, furnished 1-bedroom split-level attic apartment with a balcony and a large attic study, situated on the sixth top floor of a traditional residential building that has undergone a complete reconstruction. Located in close vicinity of the Stromovka and Letenské Sady parks, with quick access to the city center by tram or metro (Hradčanská metro station is just two short stops by tram). Full amenities within easy reach, convenient to the airport and international schools.

The lower level of the apartment includes a living room with a fitted open kitchen and **balcony** facing the courtyard, one bedroom with a direct view of the Petřín Hill, and a bathroom with a walk-in shower, toilet and bidet shower. The upper floor features an additional space (20 m²) suitable for a guest bedroom, study or walk-in closet.

Hardwood floors, tiles, security entry door, gas heating, kitchenware, lift. Service charges and water CZK 1730/month for two persons. Gas and electricity are billed separately. Available from February 2019.



* Area of the unit according to the Civil Code. The area consists of the sum total area of the entire unit bounded by perimeter walls.