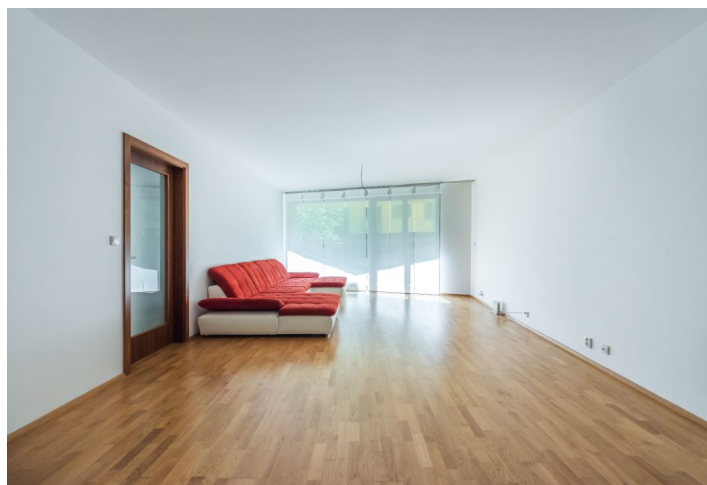
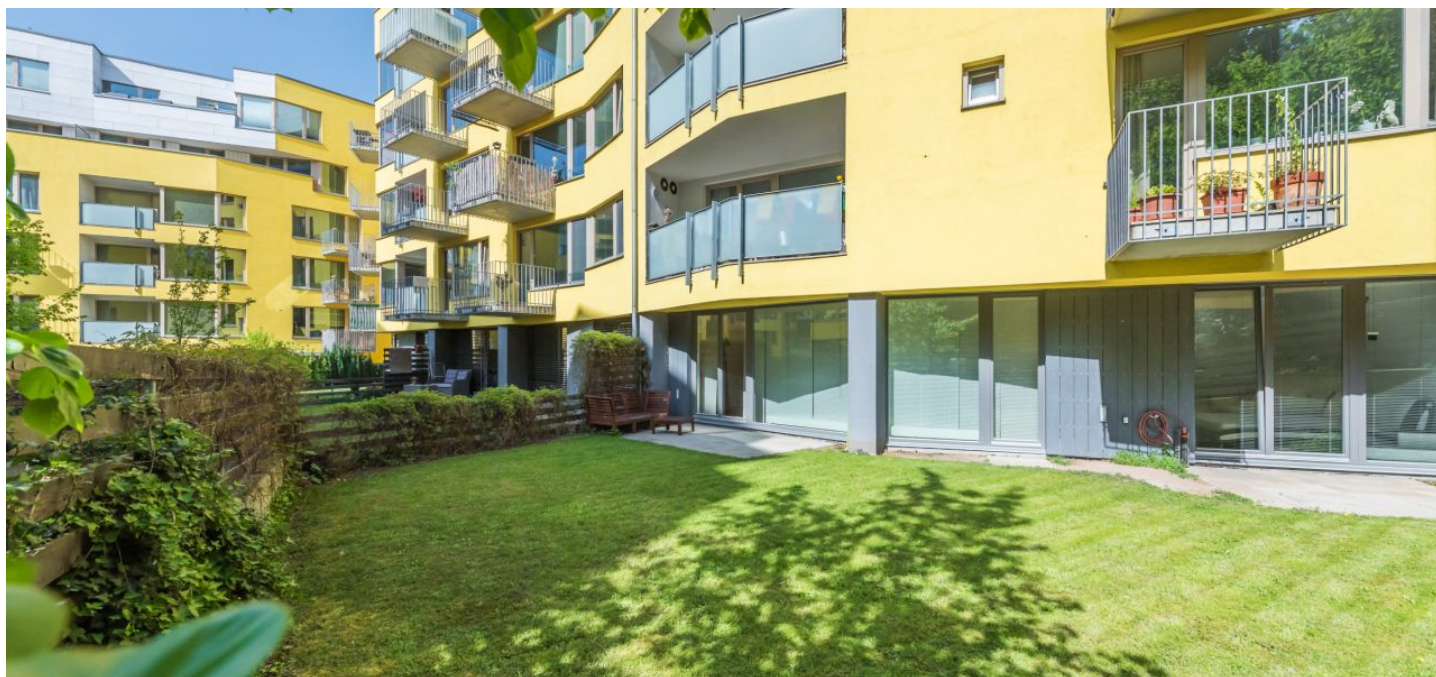




Apartment Two-bedroom (3+kk)

Sold

116 m², Prague 3, Žižkov, Jeseniova





Apartment Two-bedroom (3+kk)

Sold116 m², Prague 3, Žižkov, Jeseniova

Total area	123 m ²
Floor area*	116 m ²
Terrace	7 m ²
Garden	92 m ²
Parking	1 garage parking space at extra cost 400.000 Kč
Garage	Yes
Cellar	Yes
PENB	B
Reference number	31039

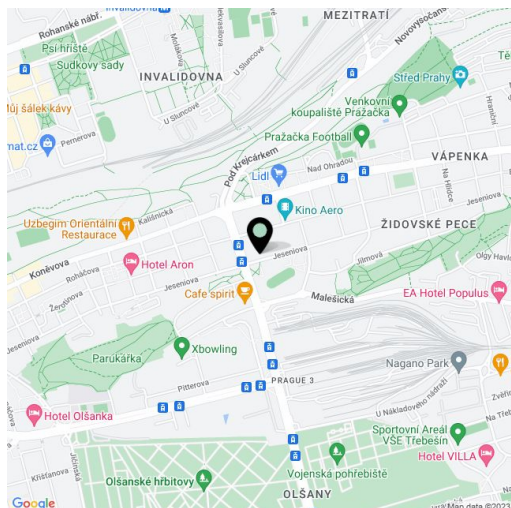
This apartment with a south-facing garden overlooking the greenery is located on the 1st floor of the gated Jeseniova Residence with a reception. In a pleasant location in a quiet part of Žižkov near a park that offers a full spectrum of services in close proximity to the center.

The layout consists of a living room with a preparation for a kitchen, 2 bedrooms, 2 bathrooms (one with a bathtub and the second with a shower), a guest toilet, and a hall with a closet. **The south-facing garden** is accessible from the the living room as well as from both bedrooms.

Features include **wooden floors**, large-format Euro-windows with internal blinds and doors with concealed hinges. In the hall, there is a built-in wardrobe. The price includes 1 **garage parking space at extra cost**. There is a central gas boiler room in the building as well as a lockable storage room for bikes and prams.

The residence is located on the edge of **Parukářka Park**, perfect for sports & leisure. A tram stop with direct connections to the city center is a few minutes' walk away, and there is a bus stop even closer. The ride to the Florenc metro station (line B and C) takes 6 minutes, and it is a 10-minute walk to the **Flora** metro station (line A). The neighborhood has **full civic amenities**: a post office, a pharmacy, shops including a supermarket, a kindergarten and elementary school, many restaurants, and a swimming pool and fitness center.

Interior 116 m², garden 92 m², terrace 7 m².



* Area of the unit according to the Civil Code. The area consists of the sum total area of the entire unit bounded by perimeter walls.



Apartment Two-bedroom (3+kk)

Sold

116 m², Prague 3, Žižkov, Jeseniova

