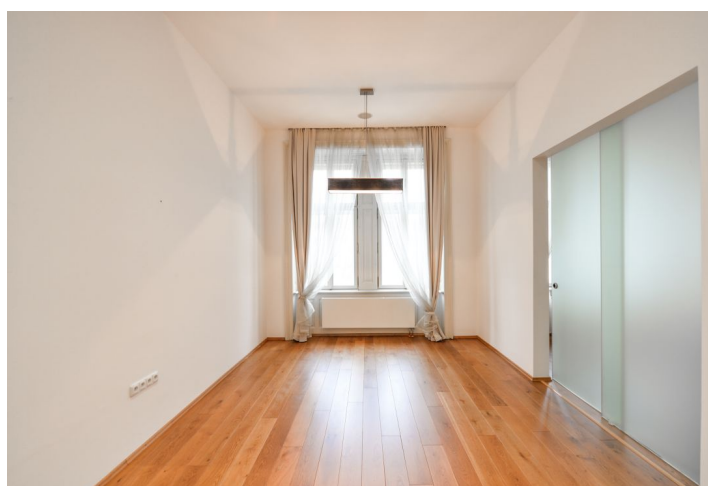




Apartment Two-bedroom (3+kk)

Rented

105 m², Prague 1, Nové Město, Petrské náměstí





Apartment Two-bedroom (3+kk)

Rented

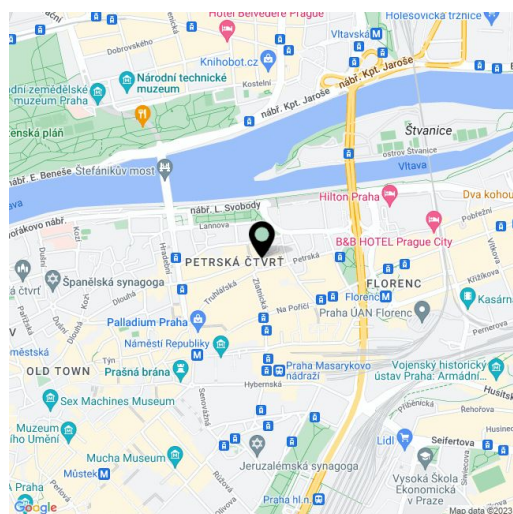
105 m², Prague 1, Nové Město, Petřské náměstí

Total area	105 m²
Parking	-
Cellar	-
PENB	G
Reference number	31122
Available from	Immediately

This fully refurbished 2-bedroom apartment with views of Petřské Square is on the first floor of a renovated traditional residential building with preserved original architectural details. Located in the very city center, within easy reach of complete amenities and public transportation, just a few min. walk from the Náměstí republiky and Florenc metro stations, the Hilton Hotel, and the largest Czech shopping mall - Palladium. A swimming pool and a fitness center are just a short walk away, and the Štvanice tennis courts are close-by.

The interior includes a living room with a fully fitted open kitchen, an adjacent walk-through bedroom, a master bedroom facing the courtyard, a bathroom equipped with a walk-in shower and a bathtub, a separate toilet, **two walk-in closets**, and a spacious entrance hall with built-in wardrobes.

High ceilings, new well insulated windows, **hardwood floors**, security entry door, audio system throughout, gas boiler, dishwasher, induction cooktop, video entry phone, chip building entry. No elevator. One **on-site garage parking space available from January 1, 2019**. Service charges and water are CZK 650/person/month. Gas and electricity are billed separately.



* Area of the unit according to the Civil Code. The area consists of the sum total area of the entire unit bounded by perimeter walls.