



## Apartment Studio (1+kk)

44 m<sup>2</sup>, Praha 5, Smíchov, V Lesíčku

Rented





## Apartment Studio (1+kk)

44 m<sup>2</sup>, Praha 5, Smíchov, V Lesíčku

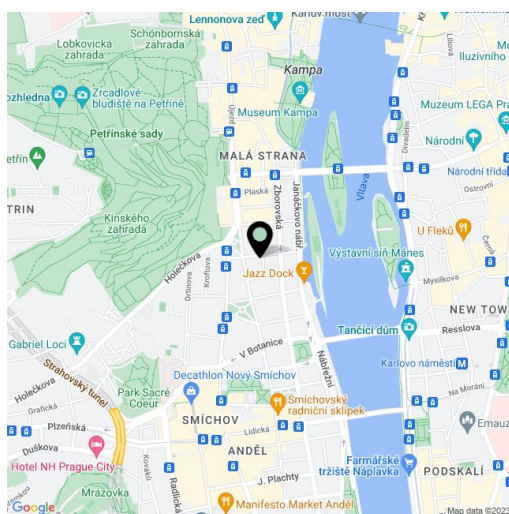
Rented

Total area	44 m <sup>2</sup>
Parking	-
Cellar	-
PENB	G
Reference number	31235
Available from	Immediately

This is a fully furnished studio apartment on the first floor of a completely refurbished century-old building with an elegant classical facade, transformed into a city residence. Located in a quiet street in close vicinity of the Vltava embankment, Petřín Park and Kinský Garden, near the Prague Castle and the Charles Bridge. Area with quick connections to the city center (trams), and within easy reach of the Nový Smíchov commercial and entertainment zone and Anděl metro station (6 min. to the city center).

The studio includes a living room with a bedroom area, a fully fitted open kitchen, a bathroom with a bathtub and toilet, a laundry room, and an entrance hall.

Features include high ceilings, large windows, **oak parquet flooring**, central heating, Miele appliances, washer, dryer, dishwasher, combination oven, coffee maker, toaster, kettle, kitchenware, TV, satellite connection, lift. Service charges, water and heating CZK 1524 per month. Electricity is billed separately. **Mid term rental available at a higher rent.**



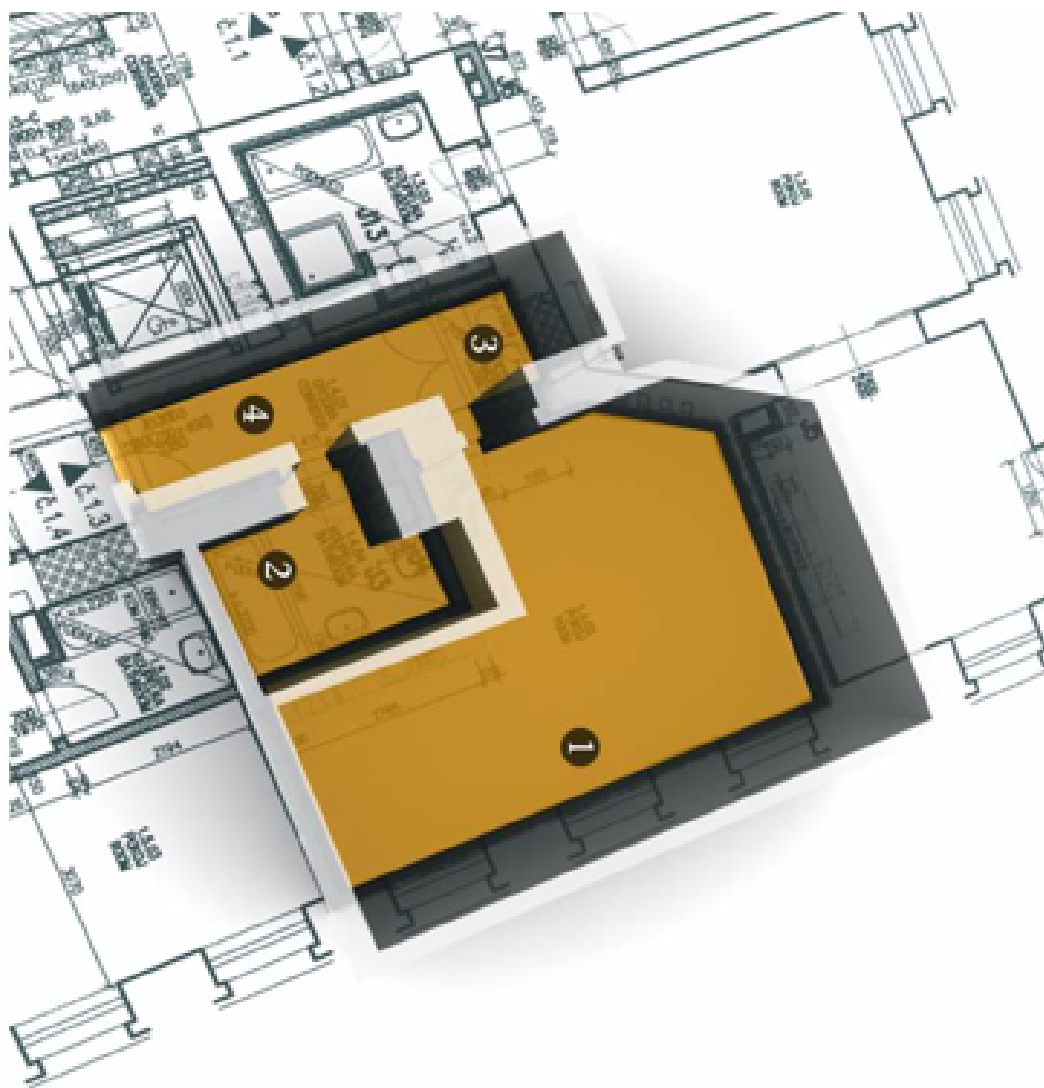
\* Area of the unit according to the Civil Code. The area consists of the sum total area of the entire unit bounded by perimeter walls.



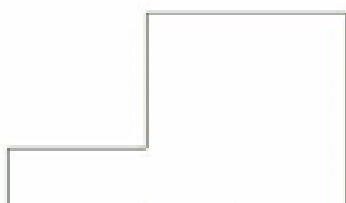
## Apartment Studio (1+kk)

44 m<sup>2</sup>, Praha 5, Smíchov, V Lesíčku

Rented



svoboda



Byt / Apartment 1:-  
1 / Pokoj / Room  
2 / Koupelna / Bath  
3 / Komora / Close  
4 / Chodba / Corridor