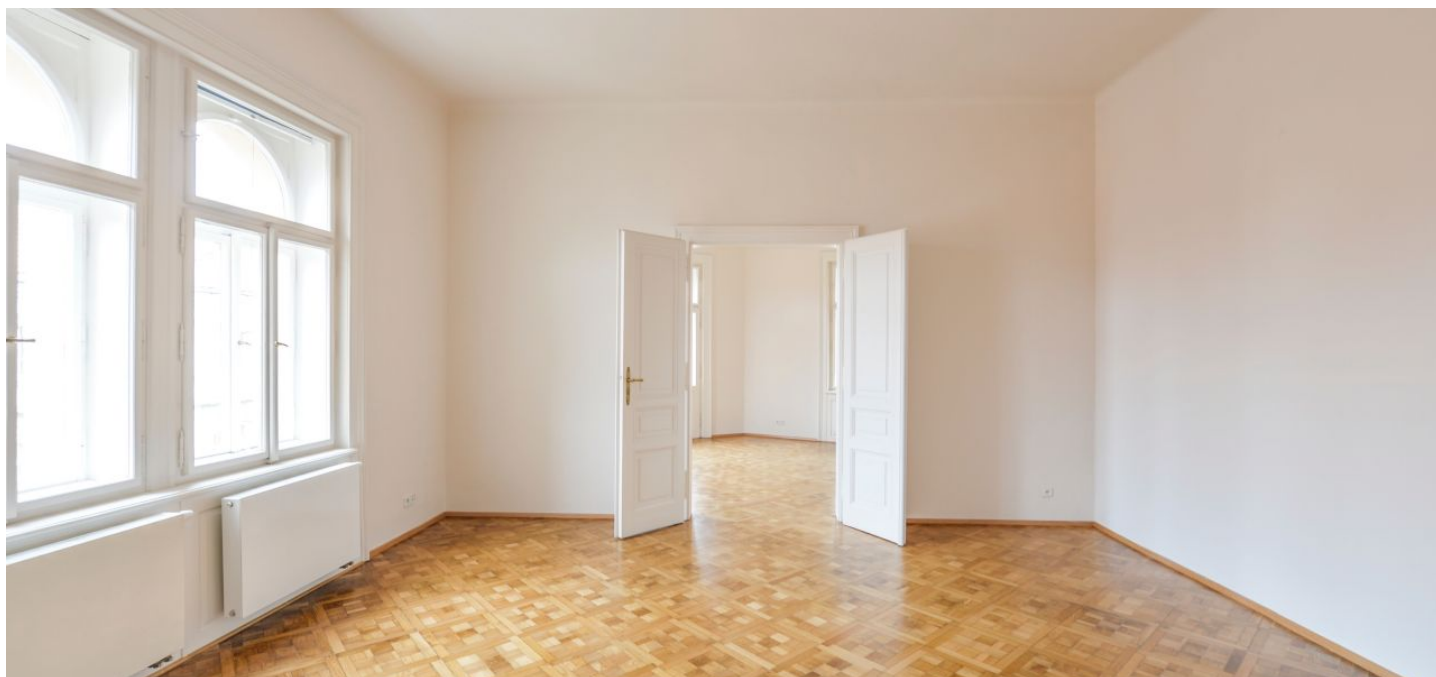




Apartment Three-bedroom (4+1)

Rented

134 m², Prague 1, Staré Město, Dlouhá





Apartment Three-bedroom (4+1)

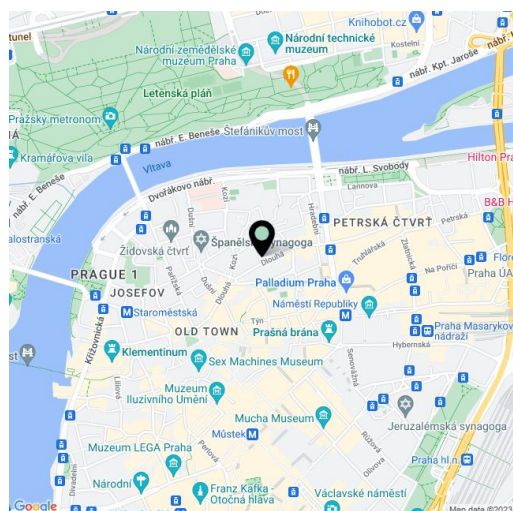
Rented134 m², Prague 1, Staré Město, Dlouhá

Total area	136 m ²
Floor area*	134 m ²
Balcony	2 m ²
Parking	Garage parking available nearby.
Garage	Yes
Cellar	-
PENB	G
Reference number	31293
Available from	Immediately

This spacious, renovated 2-3-bedroom apartment with a balcony is situated on the fourth floor of a completely renovated residential building with an elevator, security service, and a grand foyer. Conveniently located in the Prague city center, just minutes from Old Town Square, luxurious Pařížská Street, and the Náměstí Republiky metro station, with excellent shopping and entertainment opportunities. A prestigious address surrounded by a top selection of restaurants, cafes, bistros, delis, boutiques, and other services, within walking distance of the Vltava riverbank and Letná Park.

The interior features one bedroom with built-in wardrobes and storage, a second bedroom, a corner living room with a **balcony** facing the street, a fully fitted kitchen, an adjacent office, and a dining room (can be used a third bedroom). There is a bathroom fitted with a bathtub and a shower screen, a toilet, and an entrance hall with built-in storage.

Preserved original details, high ceilings, large windows, **solid wood parquet floors**, tiles, roller blinds, gas boiler, washing machine, dishwasher, alarm, chip entry to the building. Garage parking can be arranged nearby at around CZK 6,000/space/month. Deposit for service charges and water CZK 1,000/person/month. Security charge CZK 2,000/month. Gas and electricity will be transferred to the tenant.



* Area of the unit according to the Civil Code. The area consists of the sum total area of the entire unit bounded by perimeter walls.



Apartment Three-bedroom (4+1)

Rented134 m², Prague 1, Staré Město, Dlouhá

č.místnosti	popis	plocha /m ²
1	pokoj	17,8
2	pokoj	29,3
3	pokoj	26,5
4	pokoj	20,6
5	kuchyň	12,5
6	pracovna	5,9
7	koupelna	4,9
8	WC	1,4
9	chodba	15,4
	celkem	134,4

